

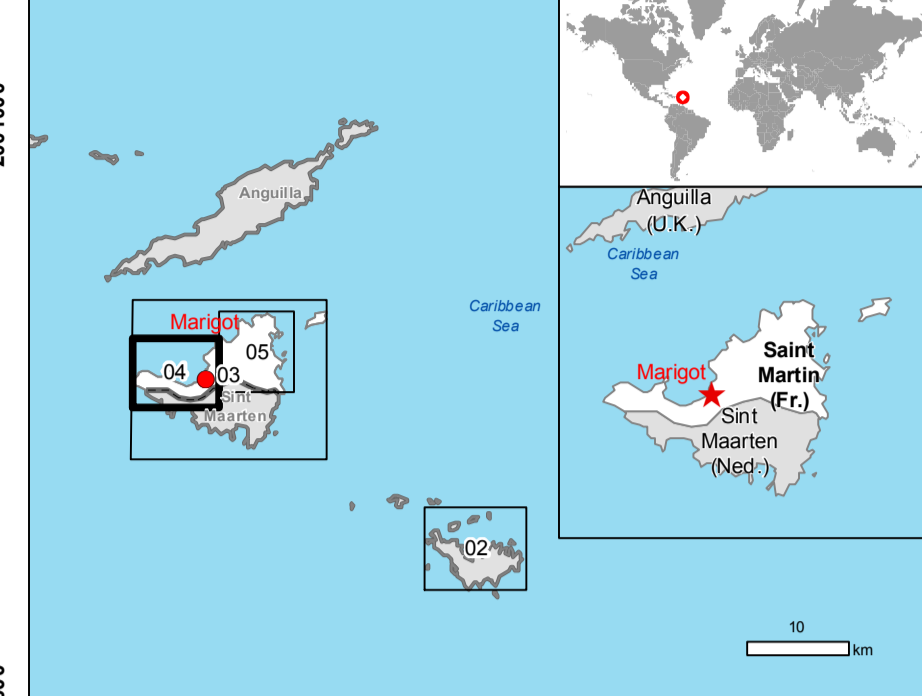
484000 485000 486000 487000 488000 489000 490000 491000 492000

GLIDE number: N/A Activation ID: EMSR232
Product N.: 04MARIOT, v1, English

Marigot - SAINT MARTIN (FR.)

Wind storm - Situation as of 14/09/2017

Grading Map - MONITO2



Cartographic Information

1:13000 Full color ISO A1, low resolution (100 dpi)



Grid: WGS 1984 UTM Zone 20N map coordinate system
Tick marks: WGS 84 geographical coordinate system

- Legend**
- Crisis Information**
 - Destroyed
 - Highly Damaged
 - Moderately Damaged
 - Negligible to slight damage
 - Hydrology**
 - Coastline
 - Stream
 - Lake
 - Transportation**
 - Bridge
 - Harbour
 - Primary Road
 - Secondary Road
 - Local Road
 - General Information**
 - Area of Interest
 - Clouds
 - Administrative boundaries**
 - International Boundary
 - Settlements**
 - Populated Place

Consequences within the AOI

	Unit of measurement	Destroyed	Highly damaged	Moderately damaged	Negligible to slight damage	Total affected	Total in AOI
Estimated population	No. of people	3756	3495	4416	6499	18166	19485
Settlements	Residential	No. 1448	1356	1726	2540	7100	7226
	Cemetery	No. 0	0	1	1	1	1
	Commercial	No. 2	3	4	0	9	9
	Educational	No. 1	0	3	0	4	4
	Recreational	No. 10	45	143	74	272	277
	Industrial	No. 8	4	20	12	44	44
Transportation	Medical	No. 0	3	0	2	5	5
	Transportation	No. 4	0	0	0	4	4
	Harbour	No. 0	0	0	0	0	1
	Local roads	km. 0	0	0	0	0	57.6

Map Information
Hurricane Irma has been upgraded to a powerful category five storm as warnings have been issued for several Caribbean islands. The hurricane had sustained winds of up to 280km/h. Irma is projected to hit the islands, causing storm surges, life-threatening winds and torrential rain.

The present map shows the damage grade assessment in the area of Marigot (Saint Martin, FR.). The thematic layer has been derived from post-event satellite image by means of visual interpretation. The estimated geometric accuracy is 5 m CE90 or better, from native positional accuracy of the background satellite image.

Relevant date records

Event	06/09/2017	Situation as of	14/09/2017
Activation	05/09/2017	Map production	18/09/2017

Data Sources
Pre-event image: Pleiades-1B© CNES (2017), distributed by Airbus DS (acquired on 12/02/2017 at 14:54 UTC, GSD 0.5 m, approx. 0% cloud coverage in AOI, 25.4° off-nadir angle), provided under COPERNICUS by the European Union and ESA, all rights reserved.
Post-event image: Pleiades-1B© CNES (2017), distributed by Airbus DS (acquired on 10/09/2017 at 14:40 UTC, GSD 0.5 m, approx. 25% cloud coverage in AOI, 26.4° off-nadir angle), provided under COPERNICUS by the European Union and ESA, all rights reserved.
Post-event image: Pleiades-1A© CNES (2017), distributed by Airbus DS (acquired on 14/09/2017 at 14:59 UTC, GSD 0.5 m, approx. 50% cloud coverage in AOI, 16.7° off-nadir angle), all rights reserved provided under International Charter

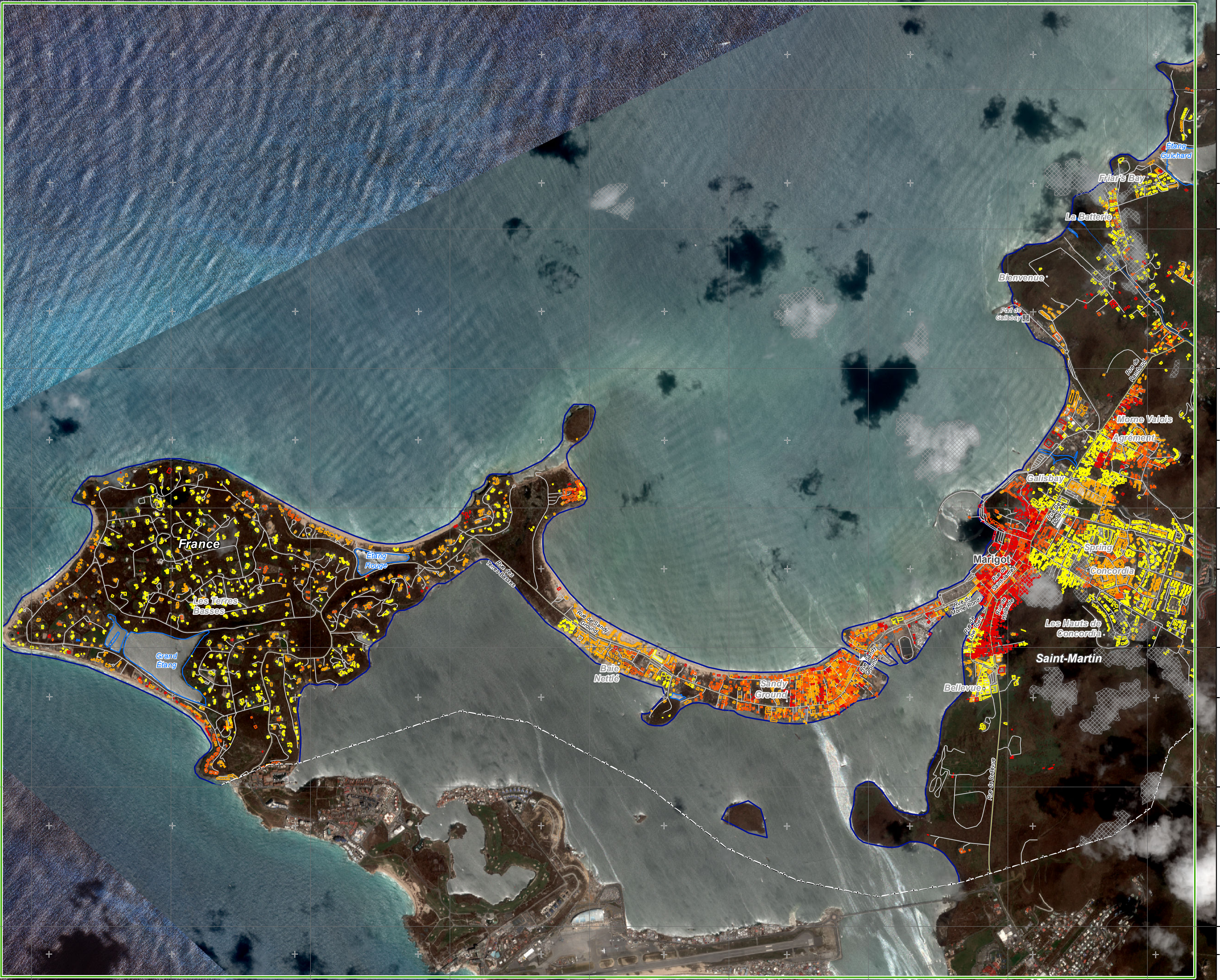
Base vector layers: OpenStreetMap © OpenStreetMap contributors, Wikimapia.org, GeoNames 2015, refined by the producer.
Inset maps: JRC 2013, © EuroGeographics, Natural Earth 2012, CCM River DB © EUR/C2007, GeoNames 2013.

Disclaimer

Products elaborated in this Copernicus EMS Rapid Mapping activity are realized to the best of our ability, within a very short time frame, optimising the available data and information. All geographic information has limitations due to scale, resolution, date and interpretation of the original sources. The map and the information content are derived from satellite data without in situ validation. No liability concerning the contents or the use thereof is assumed by the producer and by the European Union.
Map produced by ITHACA released by e-GEOS (ODO).

For the latest version of this map and related products visit <http://emergency.copernicus.eu/EMSR232>

irc-ems-rapidmapping@ec.europa.eu
© European Union
For full Copyright notice visit <http://emergency.copernicus.eu/mapping/ems/cite-copernicus-ems-mapping-portat>



484000 485000 486000 487000 488000 489000 490000 491000 492000