

CLI- MATE CHAN-

PUBLIC
EXPERTISE:
CEREMA'S
RAISON D'ÊTRE

GE: pushing
forward
transitions
together

TRUSTED PUBLIC EXPERTISE

Benefiting from more than 50 years' of hindsight and expertise in land-use planning and Transport, Cerema works alongside the **French Government, local authorities and businesses** to help them successfully meet the challenge of ecological transition.

Cerema is today's **public expert for adapting to climate change.** Every day, it furthers scientific knowledge and helps to deploy technical solutions to safeguard and improve citizens' living environment.

Acting as a guarantor of general interest, Cerema brings its knowledge and know-how to public and private players in their quest to solve complex problems.

Its **shared governance** combines Government and local authorities representatives in what is now a unique model in France.

Through its corporate strategic plan, Cerema is committed to an exemplary policy of social and environment responsibility, both internally and in its relations with its partners, in the scope of the Sustainable Development Goals (SDGs).

**PUBLIC
EXPERTISE:
CEREMA'S
RAISON D'ÊTRE**

**pushing
forward
transitions
together**

6 FIELDS OF EXPERTISE, 1 GLOBAL VISION ■

regional

expertise &

engineering

transport

infrastructure



environment

& risks

mobility

buildings

sea &

coast



11,000

REFERENCES
AVAILABLE
via open access
in French and
other languages



**FIGURES
THAT SPEAK
FOR THEMSELVES**



50

EUROPEAN
PROJECTS
under way

AROUND

600

EUROPEAN & INTERNATIONAL
SCIENTIFIC PARTNERSHIPS

2,500

STAFFS



€300m

BUDGET

12

RESEARCH
TEAMS



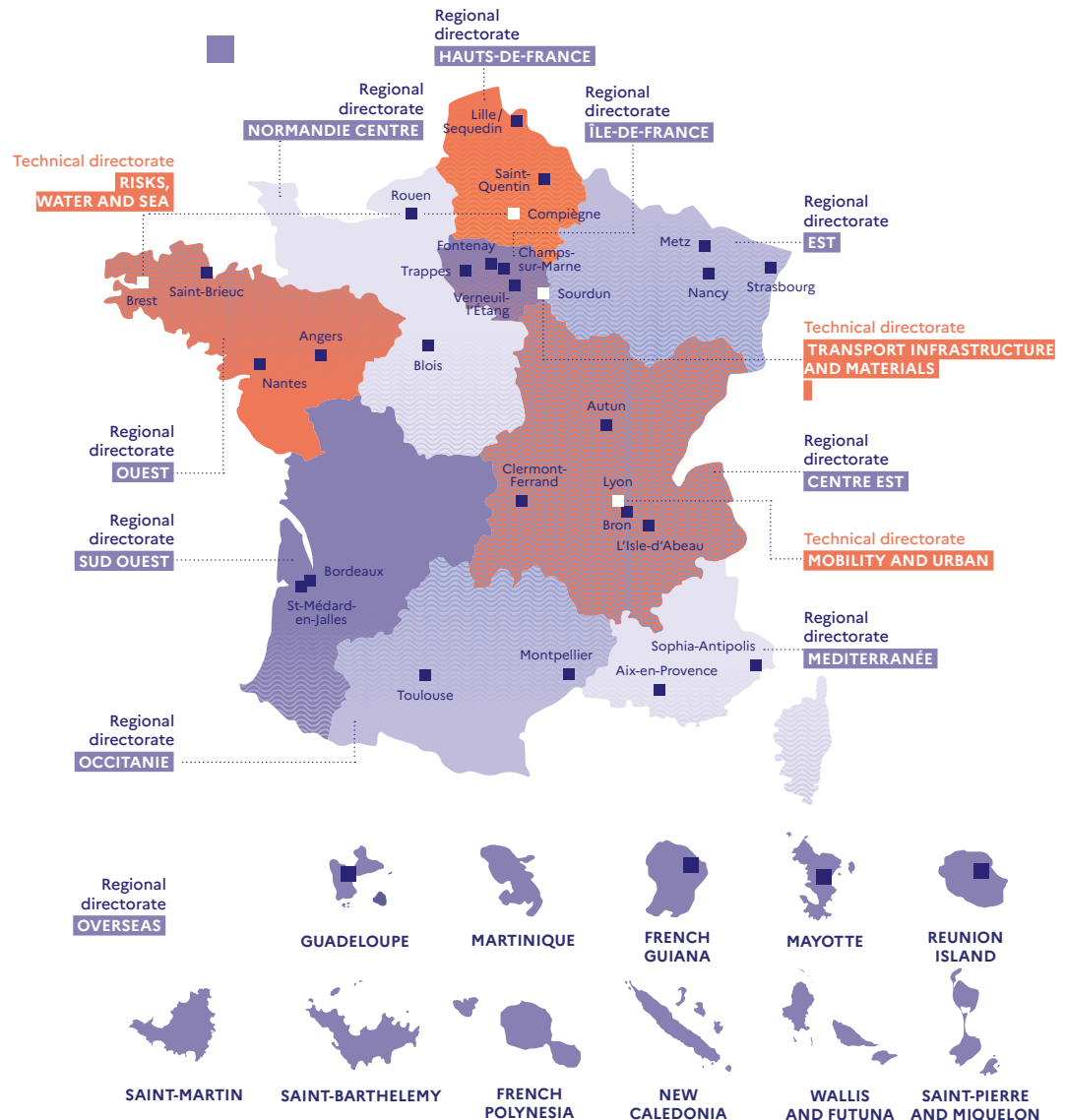
A NATIONAL DIMENSION, A LOCAL FOCUS

Located in mainland France and in its overseas territories, some **2,500 staffs** working on **27 sites** guarantee easy access to independent, benchmarks and public expertise.

Whether in mountain areas or along the coast, in rural or urban environments, all areas must now contend with the impacts of climate change and consider the future of their equipment, infrastructure and public services.

The **quality of life of citizens** is gradually being challenged: benefiting from safe and accessible transport, having access to affordable, quality housing, or a protected natural environment.

Located throughout France, Cerema takes account of these issues and aspirations in order to support those who design, build and develop the living and working conditions of every citizen.



PIONEERING EXPERTISE FOR THE BENEFIT OF A TAILOR MADE APPROACH

Regional expertise & engineering ■ Buildings
■ Mobility ■ Transport infrastructure ■
Environment & risks ■ Sea & coast

With its strong potential for innovation and research, Cerema operates in **six fields of expertise** to provide comprehensive, tailor made support to regions in the implementation of their transitions, with a global and inclusive vision of the issues.

Cerema has set up its **Institut Carnot Clim'Adapt** institute, which offers economic players and local authorities research & innovation services to meet the climate challenge.





A ROLE OF FACILITATOR, A CULTURE OF COOPERATION

Acting as a link between the national and regional levels, as well as between academic **research** and operational **innovation**, Cerema contributes to the development of France's national doctrine, supports the implementation of new methods and regulations throughout the regions, and deploys national programs with specific issues, such as the national Bridges program, or "France vue sur mer – Sentier du littoral" (France with a sea view – Coastal path).



A resource center and publisher, Cerema provides a national corpus of technical references, shares knowledge and data, builds on good practices and monitors the appropriate development of trade practices through their standardization and certification. It coordinates and trains scientific and technical communities at a local, national and international level.



A REFERENCE IN EUROPE AND IN THE WORLD



As a partner with high-level expertise, Cerema undertakes missions on all continents to help provide solutions adapted to local contexts to face climate change.

Cerema exports French know-how around the world via public-private partnerships, and contributes to France's development aid policies. Cerema works in partnerships with the World Bank and other development banks both on trainings and projects (road safety, urban planning...). It cooperates with its European partners to develop research and innovation activities and disseminate new practices.

OUR EXPERTISE AND SOLUTIONS

cerema.fr/en

OUR INNOVATION & RESEARCH PROGRAMS FOR THE BENEFIT OF ECONOMIC STAKEHOLDERS

cerema.fr/en/climadapt

cerema.fr/en/ceremalab

OUR COOPERATIVE EXPERTISE PLATFORM

expertises-territoires.fr

OUR RESOURCES

In French : doc.cerema.fr

In English : cerema.fr/en/online-catalogue

OUR INTERNATIONAL PROJECTS BY COUNTRY

cerema.fr/en/projects

CONTACT US

25, avenue François Mitterrand
CS 92803
69674 Bron Cedex - France



@cerema



@CeremaCom

