



**OCEAN & CLIMATE
PLATFORM**



SHARING SOLUTIONS WITH COASTAL
CITIES TO TACKLE SEA LEVEL RISE

Conférence #1

Innovation et l'expérimentation pour favoriser l'adaptation des territoires littoraux

Théophile Bongarts Lebbe

Chef de projet - Sea'ties
Plateforme Océan & Climat

13 juin 2023

Ateliers Regionaux Sea'ties



OCEAN & CLIMATE
PLATFORM



Regional
Workshops



Regional
Reports

2021

November

2022

April

September

October

2023

July

November

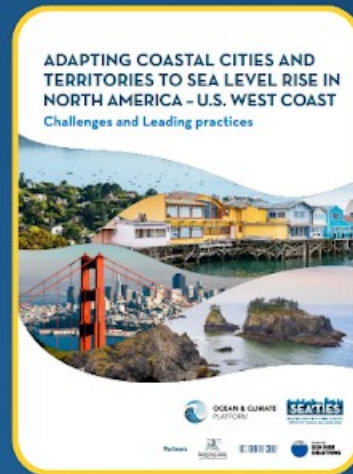
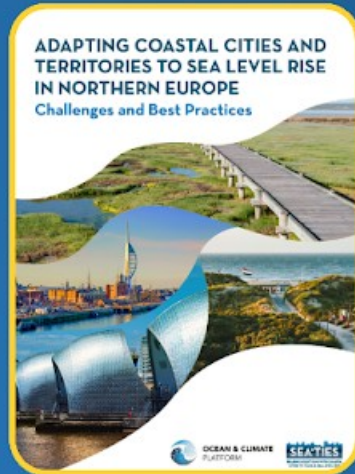
NORTHERN
EUROPE

MEDITERRANEAN

NORTH AMERICA
Santa Cruz, U.S.

WEST AFRICA
Dakar, Sénégal

PACIFIC
Nadi, Fidji

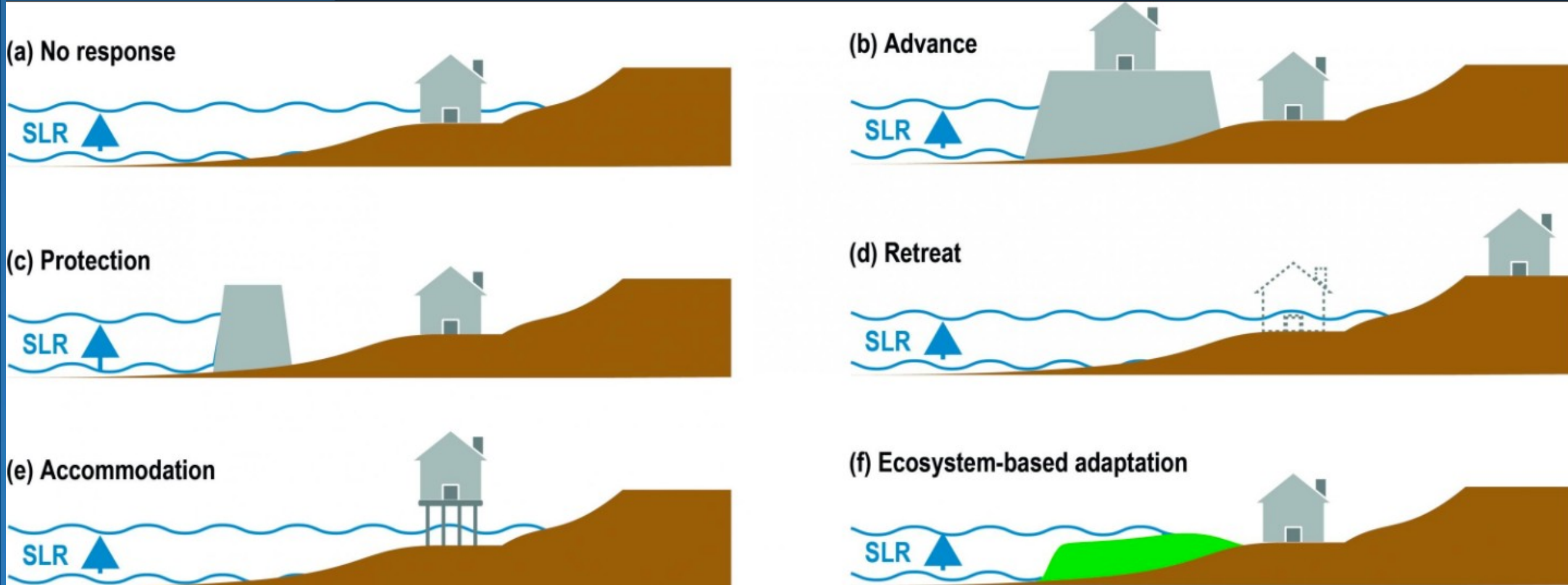


Advocacy &
Call to Action

Typologie des réponses du GIEC



OCEAN & CLIMATE
PLATFORM



Titre: Different types of responses to coastal risk and sea level rise (SLR)

Source : 2019, IPCC, SROCC, Box 4.3, Figure 1. Different types of responses to coastal risk and sea level rise (SLR).

SEA'TIES DECLARATION





SEA'TIES DECLARATION

The Mayors and Governors' Forum
Cities and their Territories Tackling Sea Level Rise
One Ocean Summit, Brest, France

« We, Mayors and Governors of coastal cities, from small towns to megalopolises, have come together at the One Ocean Summit to tackle sea level rise, one of the major threats to our territories and citizens. We call for the scaling-up of mitigation and adaptation action to limit the impacts of sea level rise on cities, communities and their territories. »

- 1/ Favoriser les solutions adaptatives et hybrides**
- 2/ Intégrer les enjeux sociétaux dans les plans d'adaptation**
- 3/ Mobiliser la connaissance scientifique et les systèmes**
- 4/ Accroître le financement public et les investissements privés pour l'adaptation**

Delivering more through effective partnerships

SUMMARY

Coastal Partners was launched to deliver a combined, efficient, and comprehensive coastal management service across the coastlines of four Local Authorities including: Havant Borough Council, Portsmouth City Council, Gosport Council, and Fareham Borough Council. A team of a 55 strong team of specialist coastal management service is driven forward by the central notion that coastal processes and coastal risk do not respect administrative boundaries, alongside the aspiration that by working together as a group of Risk Management Authorities, more could be achieved for the coastal communities being served.

CLASSIFICATION

- Risk: Oceanation, erosion
- Typology of solutions: Research-action project, Nature-based solutions / Ecosystem-based adaptation, Managed realignment, Planning documents, Land and soft protections, Community building and knowledge-sharing activities, Community participation and engagement, Habitat creation and environment improvements
- Geographical location: cities of Havant, Portsmouth, Gosport, Fareham, England
- Budget: + EUR 1 million
- Typology of actors: Local, regional authorities
- Project duration: Since 2008

Une collaboration au-delà des frontières communales

Un projet débuté en 2008 : « time of trust »

OBJECTIVES

Coastal Partners' vision is to manage coastlines, improve community resilience and enhance the natural environment. Its mission include:

- (1) Providing leading edge and innovative solutions which demonstrate best practice in coastal, environmental and community support.
- (2) Providing coastal defence and management services.
- (3) Developing and delivering environmental and habitat services, which are complementary to

RESULTS

Over the next 10 years the capital programme alone identifies nearly EUR 358 million of project delivery (across 30 projects) to better protect over 10,000 homes from coastal flooding and erosion for the next 100 years. These projects include critical environmental initiatives such as intertidal habitat creation and saltmarsh restoration⁹⁰.

30 projets: 358 millions d'euros pour protéger 10 000 logements (à horizon +100 ans)

(4) Shaping, developing, maintaining places which reduce risk, and enhancing resilience for communities.

Leading and developing the service through high professional standards.

Delivering high quality community satisfaction.

Partnering and effectively sharing resources.

Environmentally conscious, protective and enhancing resilience.

Coastal Partners functions involve managing flood and erosion risk, planning and designing new coastal defence schemes, inspecting and maintaining existing defences and working towards a flood resilient future through adaptation. In addition, the organisation has evolved its expertise in to habitat and environmental matters, geomatics, funding, research and data analysis.

By working closely with local and regional stakeholders across the four Local Authorities, Coastal Partners have been pioneering a more open and joined-up approach to coastal management to facilitate place shaping and place making. Alongside this, the organisation promotes collaboration between national and local government agencies, highlighting the need for them to recognise the benefits of aligning multiple objectives and funding partners to deliver holistic outcomes for coastal communities.

KEY TAKEAWAYS

Coastal Partners' success stems from

• Delivering high quality community satisfaction.

• Partnering and effectively sharing resources.

• Environmentally conscious, protective and enhancing resilience.

• Delivering high quality community satisfaction.

• Partnering and effectively sharing resources.

• Environmentally conscious, protective and enhancing resilience.

Planning transformational change in the City of Glasgow

SNIFFER

Climate Ready Clyde

ClimateReadyClyde

SUMMARY

CLASSIFICATION

La planification de l'adaptation à long terme, en incluant l'incertitude

Climate Ready Clyde (CRC) is a regional initiative funded by fifteen member organisations and supported by the Scottish Government to create a shared vision, strategy and action plan for Glasgow City Region which addresses the challenges of climate change. CRC's vision is a Glasgow City Region which is resilient, prosperous and fairer. Members include the eight Local Authorities of Strathclyde, Strathclyde Partnership for Transport, Scottish Environmental Protection Agency, SGH, NatureScot.

- Typology of solutions:** Research-action project, nature-based solutions, capacity-building and knowledge-sharing activities
- Budget:** Between EUR 100,000 – 1 million
- Typology of actors:** Association, NGOs, CSOs
- Project duration:** N/A

La co-construction pour faciliter l'appropriation des solutions

OBJECTIVES

Climate Ready Clyde builds on strengthening collective evidence and capacity to create the conditions for a regional transformation to achieve a more resilient, prosperous and fairer Glasgow City Region.

ACTIVITIES

CRC was established on the basis that adapting to climate change is cheaper, easier and more

Un engagement financier à travers différents secteurs d'activité (£184 millions/ans)

effective when done together. In line with this, CRC draws on the collaboration of its members and other actors, reaching across silos, sectors and agendas to create collective impact. By working on evidence, along with its adaptation strategy and its Secretariat are drivers for information, the direction of Glasgow City Region's efforts to adapt on a global stage while connecting and learning from other cities to accelerate adaptation.

RESULTS

Since its launch, CRC has contributed to increasing the understanding of how changes in the climate are likely to affect the Glasgow City Region. Its productions include: a [toolkit](#) for assessing and addressing risk in the development of built environment and infrastructure projects; the Region's first [Climate Risk and Opportunity Assessment](#); a [Theory of Change](#) which sets out a shared vision with over 100 stakeholders of what is needed to flourish in the future climate, a [Literature Review Synthesis](#) on transformational adaptation as well as the Region's first [Climate Adaptation Strategy and Action Plan](#).

KEY TAKEAWAYS

Identified stretching targets to help ensure the Action Plan stays true to the intention of supporting the most vulnerable, and of overcoming the financial and inclusion barriers to achieving the Strategy's interventions. By 2025, Glasgow City Region should have:

- (1) Increased the resilience of over 140,000 of the region's most vulnerable people to the impact of climate change.
- (2) Closed the region's adaptation finance gap of £184 m a year.
- (3) Involved 125 new organisations, community groups and businesses supporting Glasgow City Region to adapt.



Resilient Coast Santa Cruz - Cross-sector collaboration for long-term resilience.

CITY OF SANTA CRUZ, CALIFORNIA



SUMMARY

La co-définition de seuils de vulnérabilité

Resilient Coast Santa Cruz (Resilient Coast) is an initiative of the City of Santa Cruz aiming to address coastal adaptation for the long-term resilience of the City's coastline. Informed by scientific work and community vision, Resilient Coast utilizes an adaptation pathways approach supported by immersive and interactive tools, such as virtual reality used to facilitate community engagement

sea level rise, stormwater flooding, erosion

Typology of solutions: Planning and policy documents; Nature-based Solutions; knowledge sharing activities; Research to action project; soft protections; hard protections; coastal monitoring

Geographical location: Santa Cruz, California, USA

Le recours aux outils innovants pour engager les habitants

Through Resilient Coast, the community developed adaptation pathway approaches for its beaches and blufftop locations. The proposed pathways articulate several potential adaptation options over different time horizons, including living shorelines, hard protection, increased pump capacity, and managed retreat for certain coastal facilities and infrastructure in the longer term. Resilient Coast led to the production of the West Cliff Drive Adaptation and Management Plan and complementary policies in the City's Local Coastal

monitoring network and approximately \$500,000 annually to implement solutions. It has over \$2.5M currently pending in grant funding to implement solutions.

Typology of actors: Local and regional authorities; state services; research institutes and universities; community-based organizations; NGOs; companies and professional organizations

Project Duration: Resilient Coast Santa Cruz 1.0 took place between 2019 and 2022. Resilient Coast Santa Cruz 2.0 started in 2022 and is anticipated to conclude in 2024.

Program (currently being amended). Physical, social, and ecological triggers are under development, as well as a coastal change monitoring network composed of a tidal gauge, monitoring cameras, drone imagery and CoastSnap community science stations.

RESULTS

- The City had over 1,500 touchpoints with the community during Resilient Coast 1.0 through over 50 traditional and nontraditional engagement activities.
- The monitoring network consists of 1 tidal gauge, 9 cameras, 1 drone, and 10 community science stations.

La volonté forte d'inclure les populations les plus défavorisées

and drone imagery along with data sources, which will be all brought into a publicly available dashboard feeding into the coastal tracking system. The January 2023 bomb cyclone event caused a test a one-lane, one-way scenario (i.e., incremental changes) that previously had mixed results. Through engagement activities, frontline neighborhood residents produced a family emergency planning guide distributed throughout the neighborhoods.

KEY TAKEAWAYS

- Spending time building relationships with frontline community leaders and residents by sharing meals, designing meetings with them, and compensating them for their time helped establish trust and gain sustained engagement.
- Leveraging academic partnerships added capacity to the City to focus long-term on frontline communities and evaluate the efficacy of our engagement efforts.



© Stephan Hoerold

Sea'ties Map of Solutions



OCEAN & CLIMATE
PLATFORM



USAID Climate Ready Project

[READ MORE](#)

Federated States of Micronesia, Fiji, Kiribati, Palau, Papua New Guinea, Republic of Marshall Islands, Samoa, Solomon Islands, Tonga, Tuvalu and Vanuatu

Siargao It Up! Del Carmen Mangrove Management through Social Tourism

[READ MORE](#)

Del Carmen, Surigao del Norte

Enhancing Research And Innovation Ecosystems to Tackle Climate Change in the Pacific (RERIPA)

[READ MORE](#)

Cook Islands ; Federated States of Micronesia ; Fiji ; Kiribati ; Marshall Islands ; Nauru ; Niue ; Palau ; Papua New Guinea ; Samoa ; Solomon Islands ; Timor-Leste ; Tonga ; Tuvalu ; Vanuatu

Barbuda Shuttters Programme

[READ MORE](#)

Codrington

CWR APAC Coastal Threat Index for 20 cities

[READ MORE](#)

Aichi/ Nagoya, Auckland, Bangkok, Guangzhou, Ho Chi Minh, Hong Kong, Jakarta, Macao, Manila, Osaka, Seoul, Shanghai, Shenzhen, Singapore, Suzhou, Sydney, Taipei, Tianjin, Tokyo & Yangon

The Climate and Ocean Risk Vulnerability Index (CORVI)

[READ MORE](#)

SOLUTION DEPLOYED AT SCALE

Local/national *supranational*

Detailed information available

Detailed information unavailable

Signatories of the Sea'ties Declaration



**OCEAN & CLIMATE
PLATFORM**



CONTACT

Théophile Bongarts,
tbongarts@ocean-climate.org

**Sea'ties Initiative
Ocean & Climate Platform**