

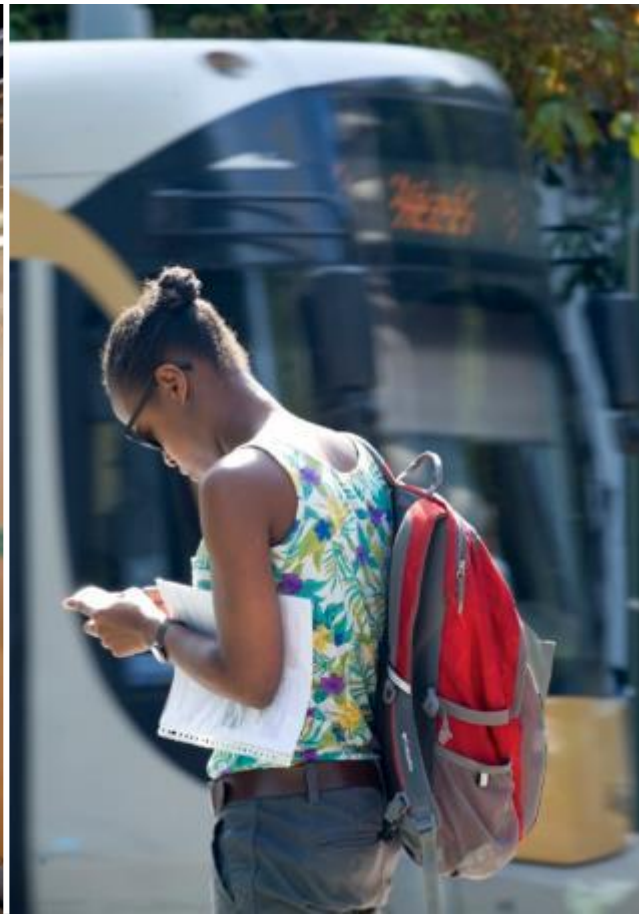
The Business Unit Tram

T. Bouckaert
10/09/2019



Who are we?

STIB = Société des Transports
Intercommunaux de Bruxelles



An integrated network

- STIB

- > Leading urban public transport company in Belgium
- > Operates an integrated network **+/- 700km**



An integrated network

- 4 metro lines
- 18 tram lines
- 50 bus lines
- 11 night bus lines



Location of our tram depots



BU Tram

- 7 depots
- 3 districts

District North-Center

- Haren
- Schaerbeek

District East

- Ixelles
- Woluwe

District South West

- Avenue du Roi
- Marconi
- Molenbeek

Our tram fleet



65 PCC T7700



61 PCC T7900



51 BN ALSTOM T2000



150 FLEXITY OUTLOOK T3000

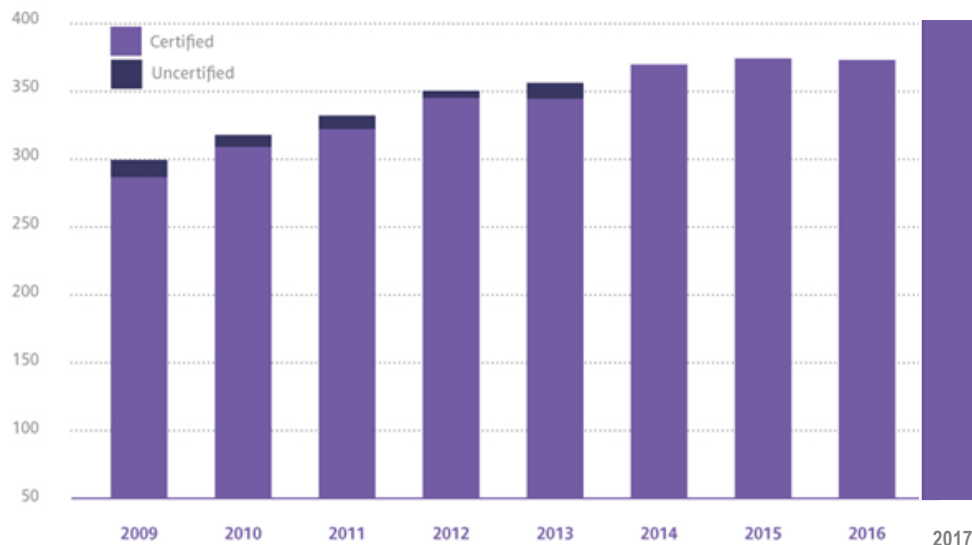


70 FLEXITY OUTLOOK T4000

Frequentation and customer satisfaction survey

- 417 millions of trips in 2018

CEN CERTIFICATION (IN MILLIONS OF CUSTOMERS)

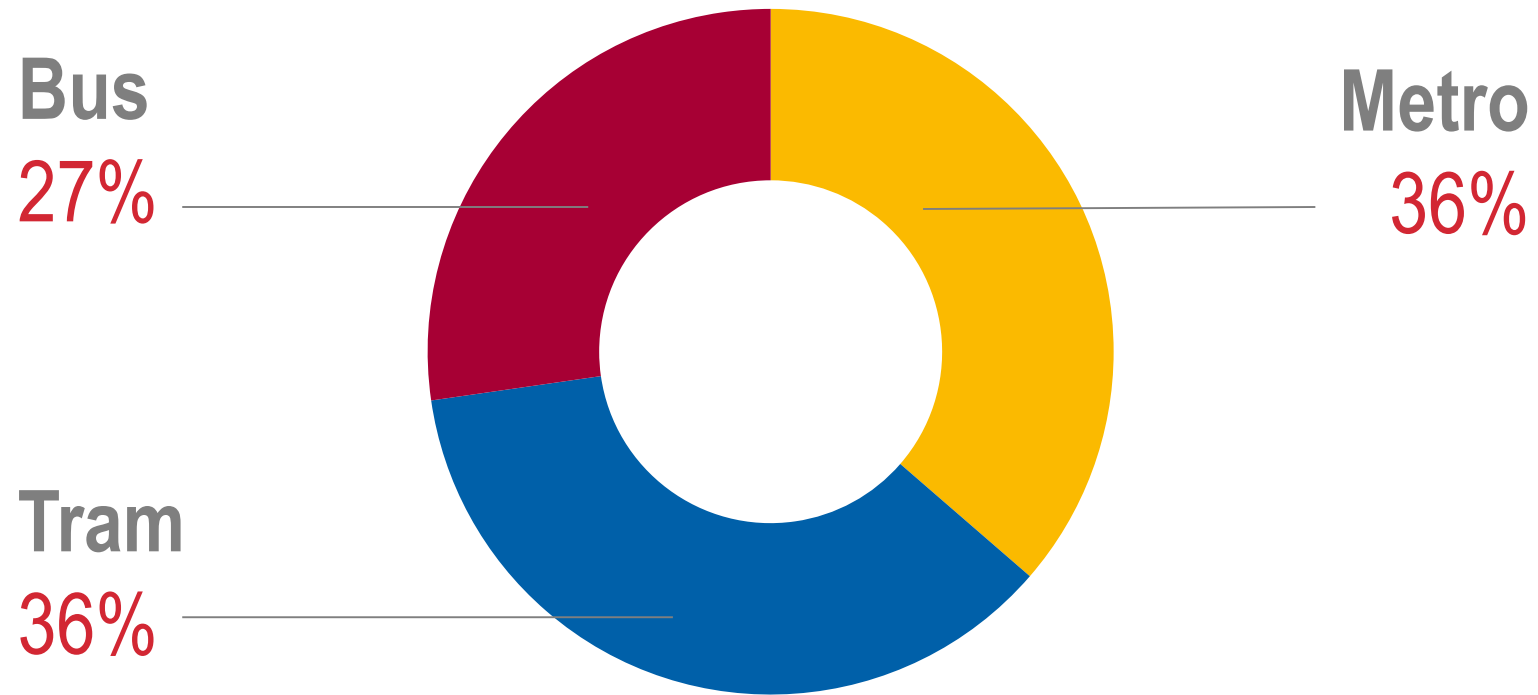


7,1/10

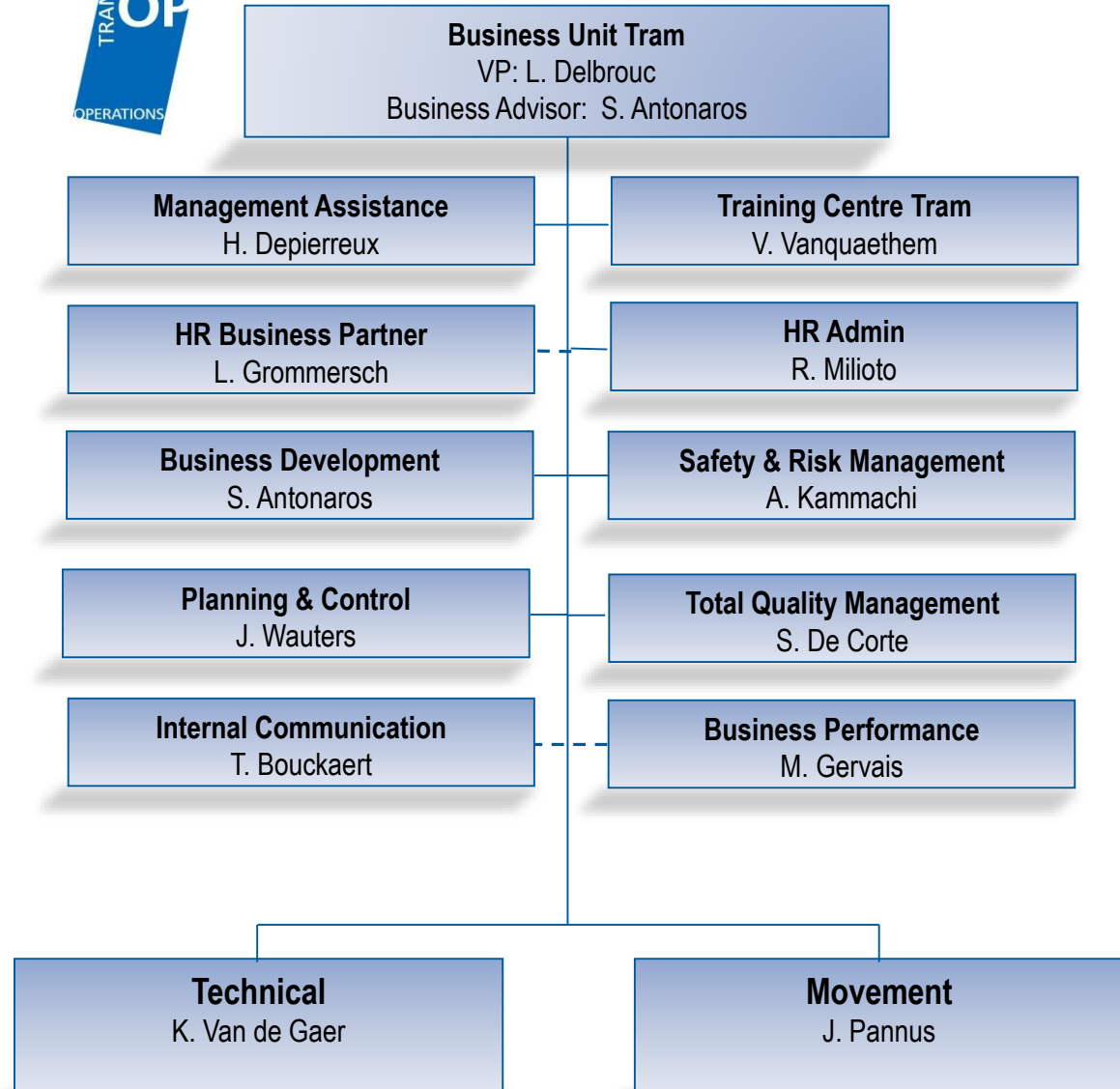
Customer Satisfaction



Frequentation: division per transport mode



Organization chart BU Tram



The tram network



General informations

- 18 tram lines (4 Chrono lines – 1 evening line)
- 281,8 km of tracks (70 % in segregated tracks)
- 12,1 km in tunnel
- 14,6 km premetro to operate 15 stations
- Operation of 742 stops overground
- Commercial speed of 16,1 km/h
- 14,8 millions realized kms to transport more than 144 millions of clients
(± 395.000 travellers a day)



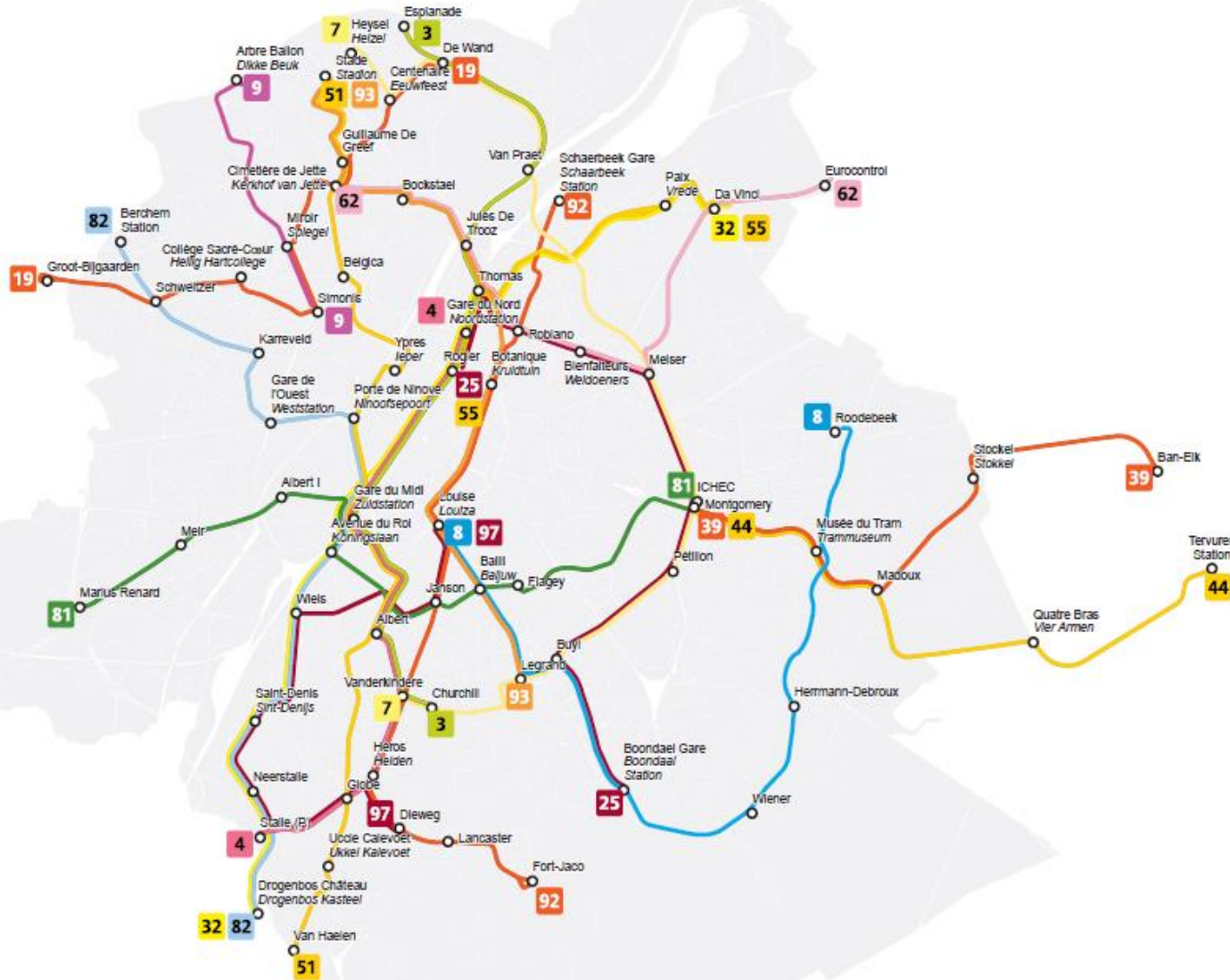
Frequencies in general

| | Peak | Off peak | Evening |
|--------------|------------|-----------|-----------|
| Working days | 5'-6' | 8'-10' | 15'-20' |
| | Peak | AM | PM |
| Saturday | 7'30 – 15' | 10' - 15' | 15' - 20' |
| Sunday | 10' – 20' | 15' - 30' | 15' - 20' |



The actual tram network

Légende - Legende



- T 3** Esplanade - Churchill
- T 4** Stalle - Gare du Nord
Stalle - Noordstation
- T 7** Vanderkindere - Heysel
Vanderkindere - Heizel
- T 8** Louise - Roodebeek
Louiza - Roodebeek
- T 9** Simonis - Arbre Ballon
Simonis - Dikke Bouk
- T 19** De Wand - Groot-Bijgaarden
- T 25** Rogier - Boondael Gare
Rogier - Boondael Station
- T 32** Da Vinci - Drogenbos Château
Da Vinci - Drogenbos Kasteel
- T 39** Montgomery - Ban-Eik
- T 44** Montgomery - Teruren Station
- T 51** Van Haelen - Stade
Van Haelen - Stadion
- T 55** Da Vinci - Rogier
- T 62** Cimetière de Jette - Eurocontrol
Kerkhof van Jette - Eurocontrol
- T 81** Montgomery - Marius Renard
- T 82** Berchem Station - Drogenbos Château
Berchem Station - Drogenbos Kasteel
- T 92** Schaerbeek Gare - Fort-Jaco
Schaerbeek Station - Fort-Jaco
- T 93** Stade - Lagrand
Stadion - Legrand
- T 97** Louise - Dieweg
Louiza - Dieweg

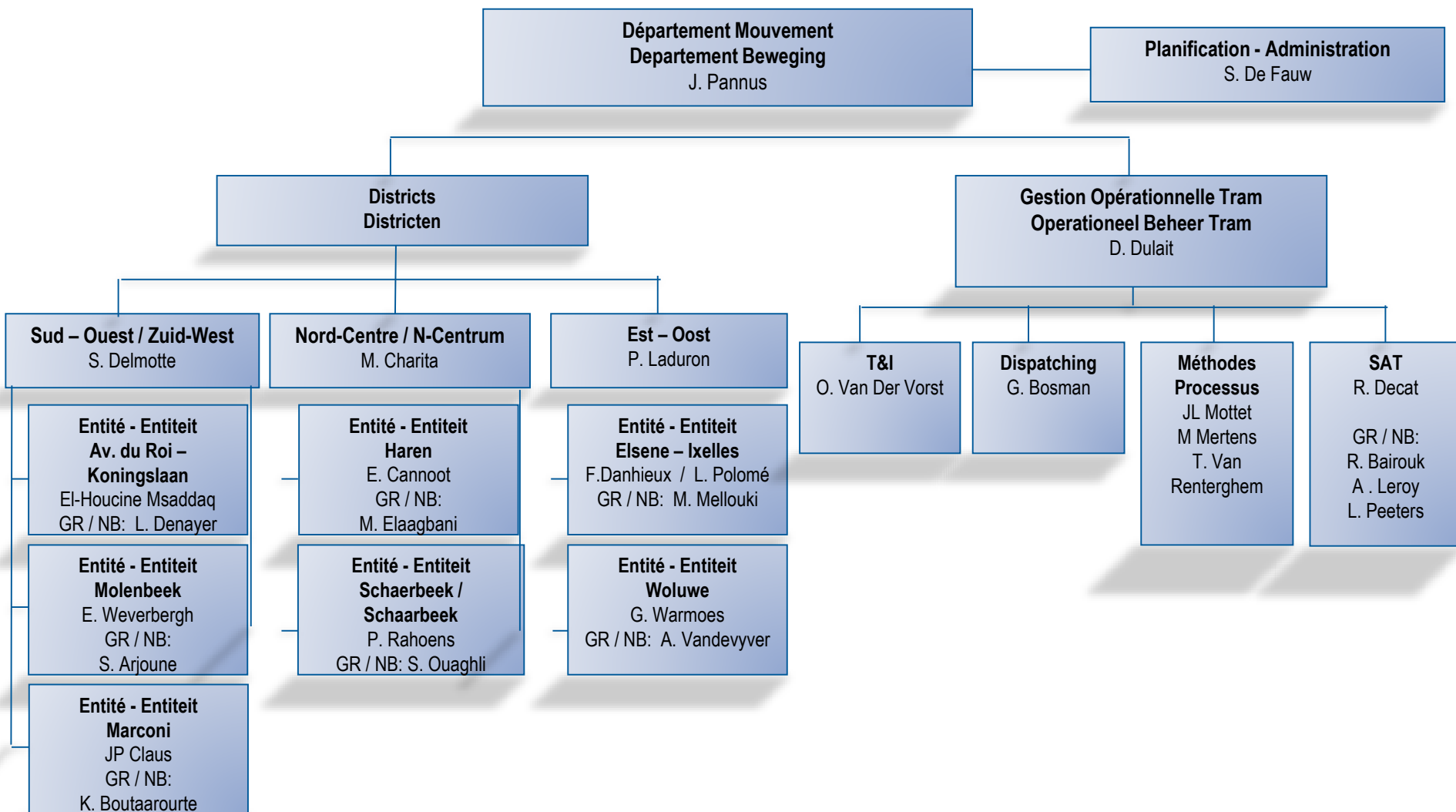
0 500 1.000 2.000 3.000 4.000
m

The Movement Department

STIB - MIVB

STIB - MIVB

Organization Chart

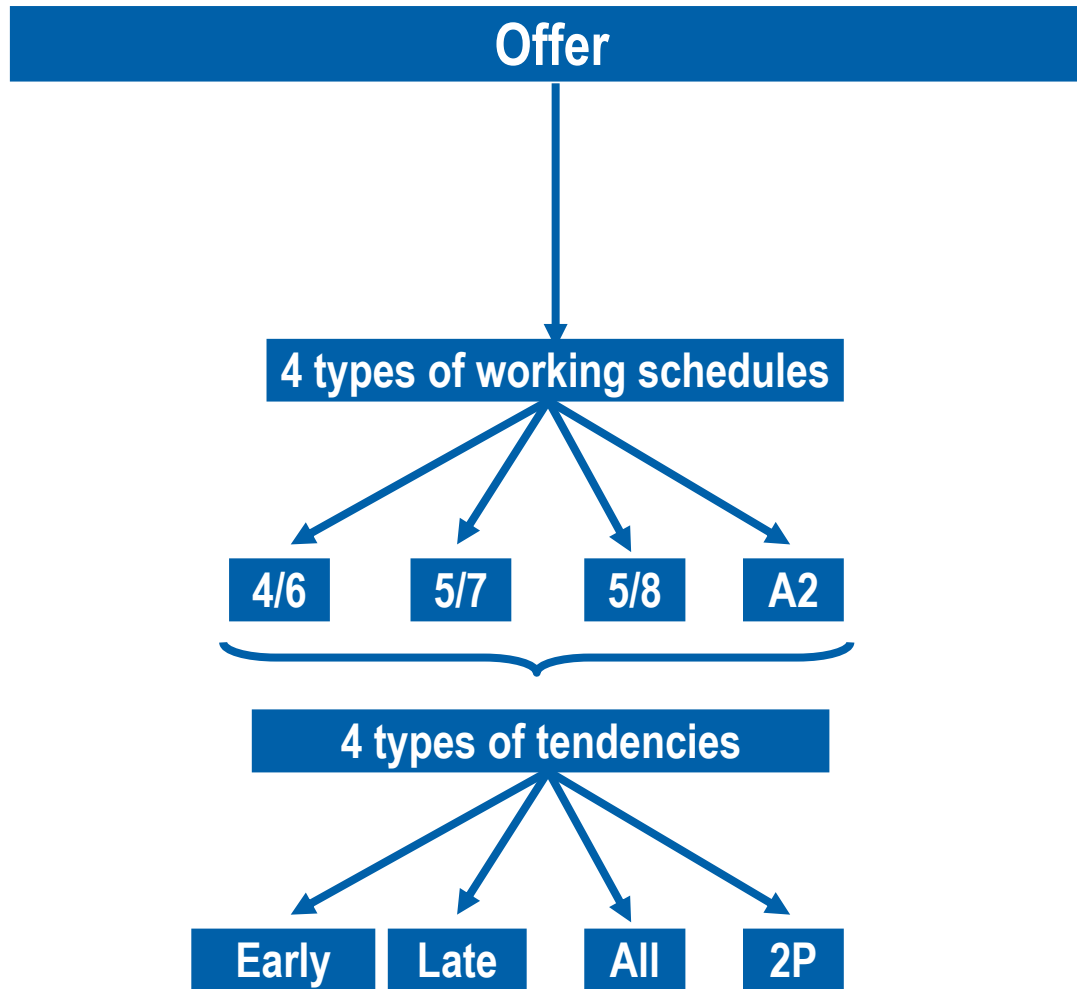


First point of contact with our clients

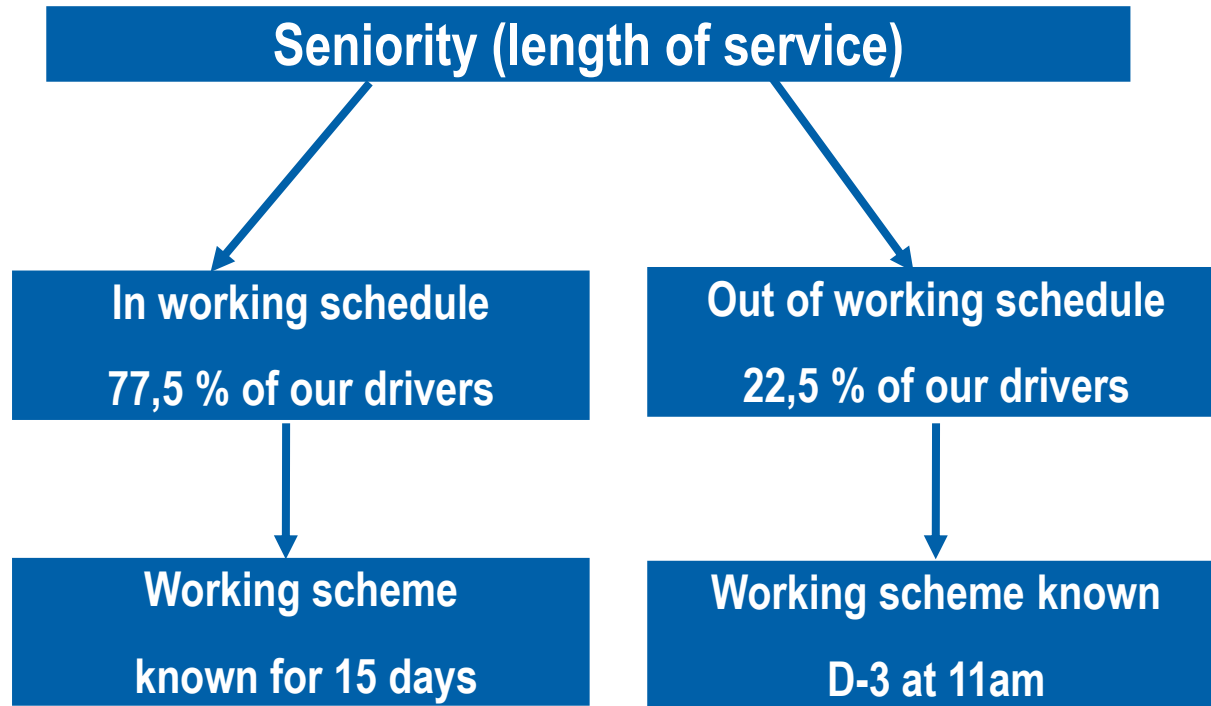
- 1400 tram drivers
- 7 depots



Working schedules of our tram drivers



Working schedules of our tram drivers

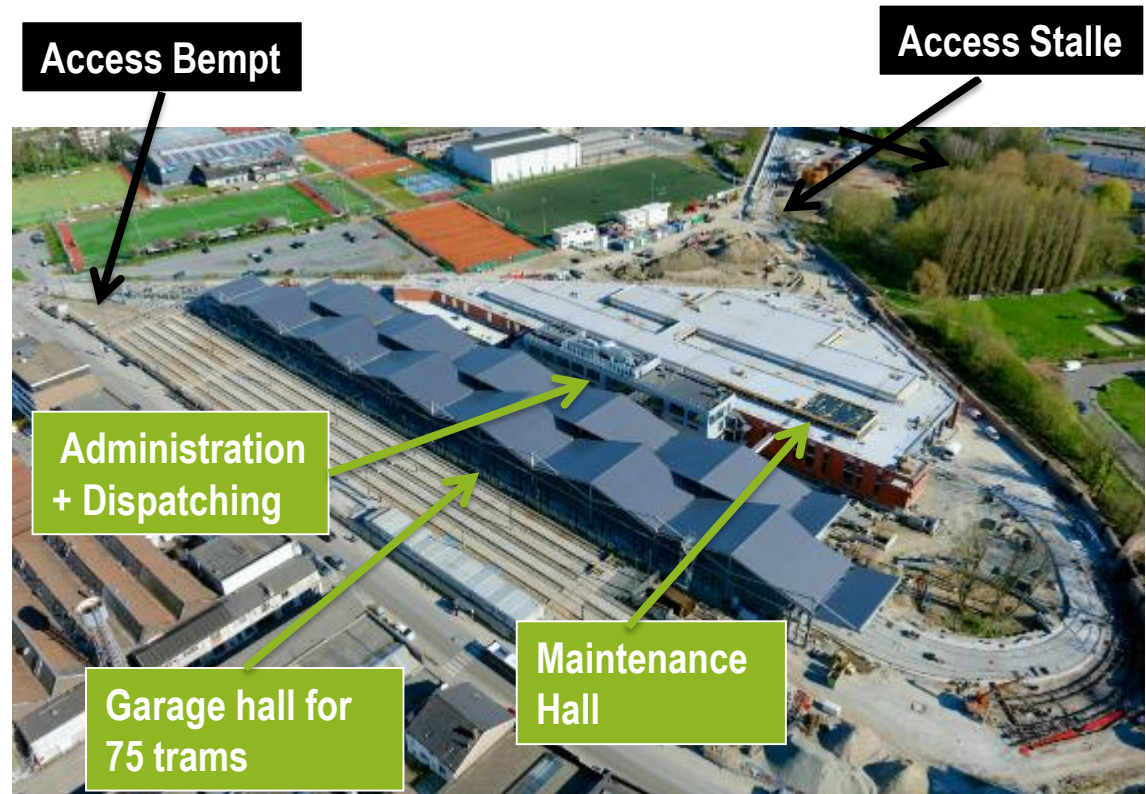


**Bright future ahead...
a lot of projects**



Marconi: new tram depot

- ❑ 2 entrances – exits
- ❑ 3 buildings
 - A garage hall for 75 trams type T3000
 - Administration building & a local controlling room to manage tram movements inside the complex
 - A maintenance hall for 10 trams (washing / vacuum installation / sanding machine / switching bogies)



Marconi: a look inside



New tram line 9 in the north of Brussels



First phase: Simonis – Haut de Jette



Second phase: avenue de l'Arbre Ballon - Heysel

- Obtained permit to start the works in 2019
- Will be probably operational: end of 2020 – beginning of 2021



Extension of tram line 94 in the east of Brussels: has become line 8



Relies Tram Museum with Roodebeek



Underground modernization



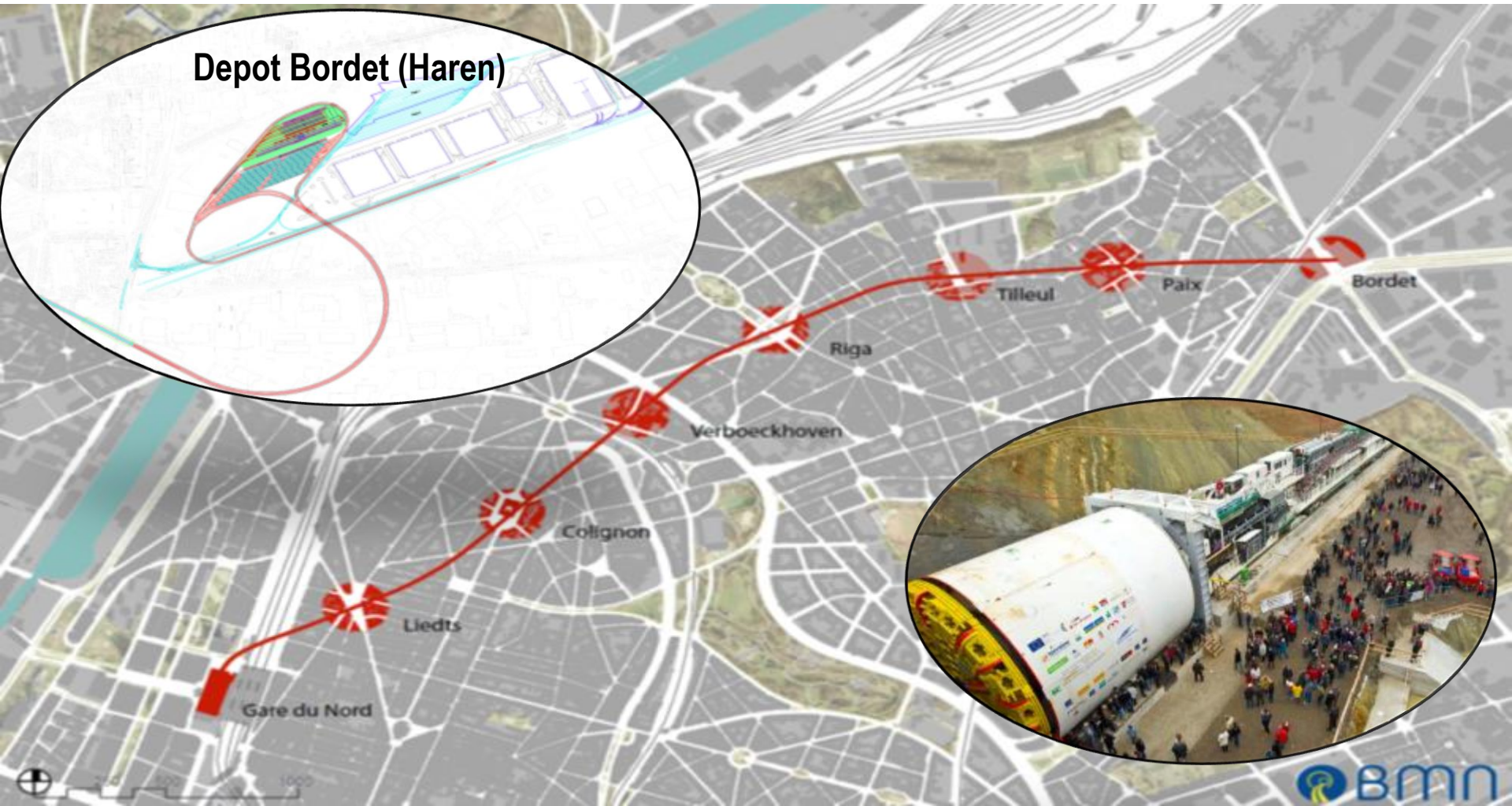
Metro line 3



Creation of metro line 3



Creation of a new underground part



Depot Bordet (Haren)

Gare du Nord

Liedts

Colignon

Verboeckhoven

Riga

Tilleul

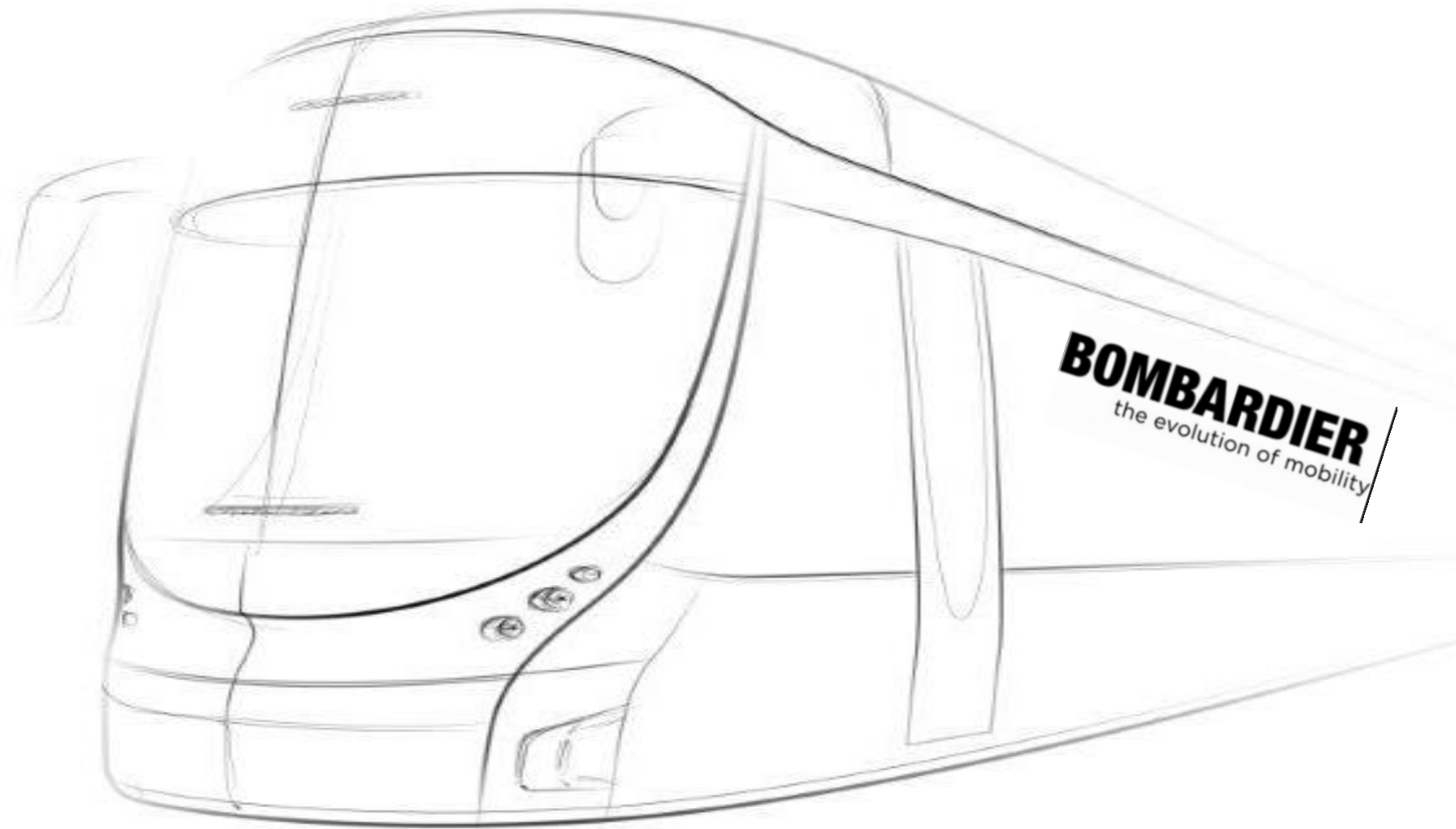
Paix

Bordet

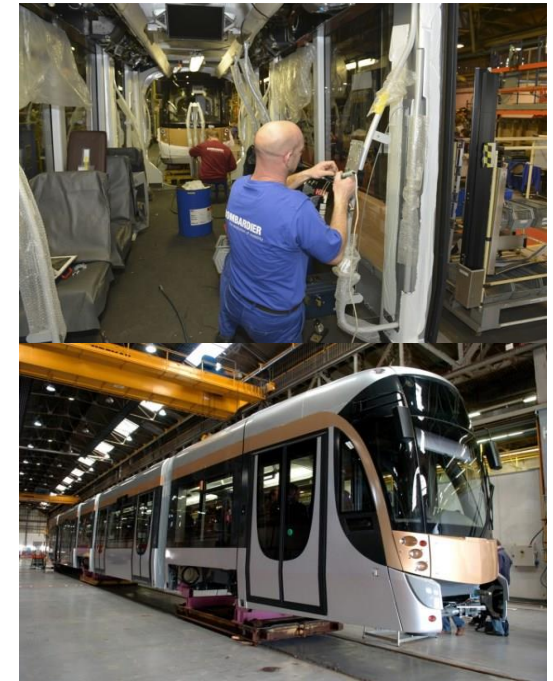
Conversion of the existing north – south tramaxis into underground



175 new trams



- Outline agreement for 175 new trams
- First confirmed order of 90 trams
- Delivery of first tram foreseen for june 2020



Other projects

- **Creation of a digital radio communication network for tram and bus**
- **Creation of a new depot in the north of Brussels**
- **Wifi in our stations**
- **Creation of several new**



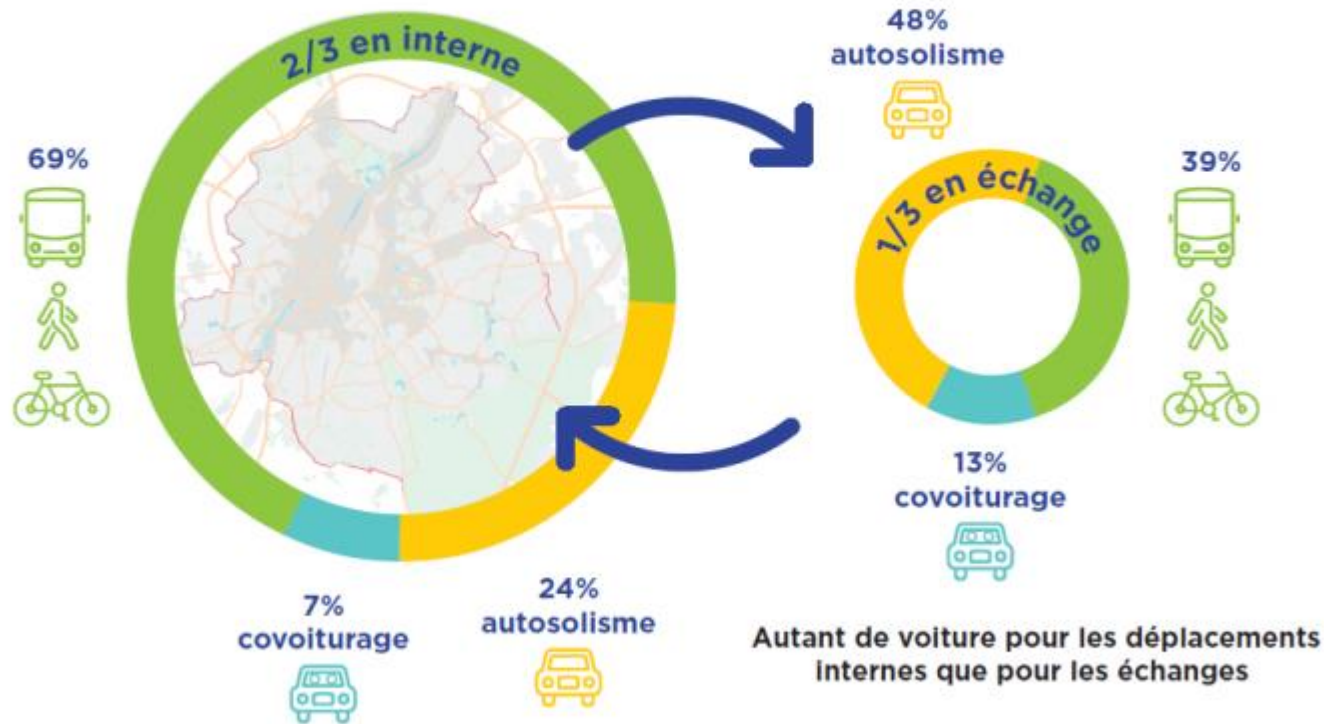


Contexte métropolitain

5 400 000

déplacements par jour dont :

*Answer from Brussels mobilités
to the question about modal
split in Brussels area*



Part modale de la voiture (autosolisme/covoiturage) dans les déplacements internes et en échange un jour moyen en 2018
(source : Musti 2018)