

# Luas Safety Statistics

Urban Tram Forum

Lyon, 3rd & 4th November 2016

Reddy Morley

Head of Rail Safety and Occupational Health & Safety

# Luas Safety Statistics

- Safety Issues
  - Pedestrian Safety
  - Cyclist Safety
  - Scutting/Tram Surfing
  - Signals Passed At Danger (SPAD)
  - Red Light Infringements and the Red Light Camera
- Luas Safety Statistics
- Safety Initiatives



# Pedestrian Safety

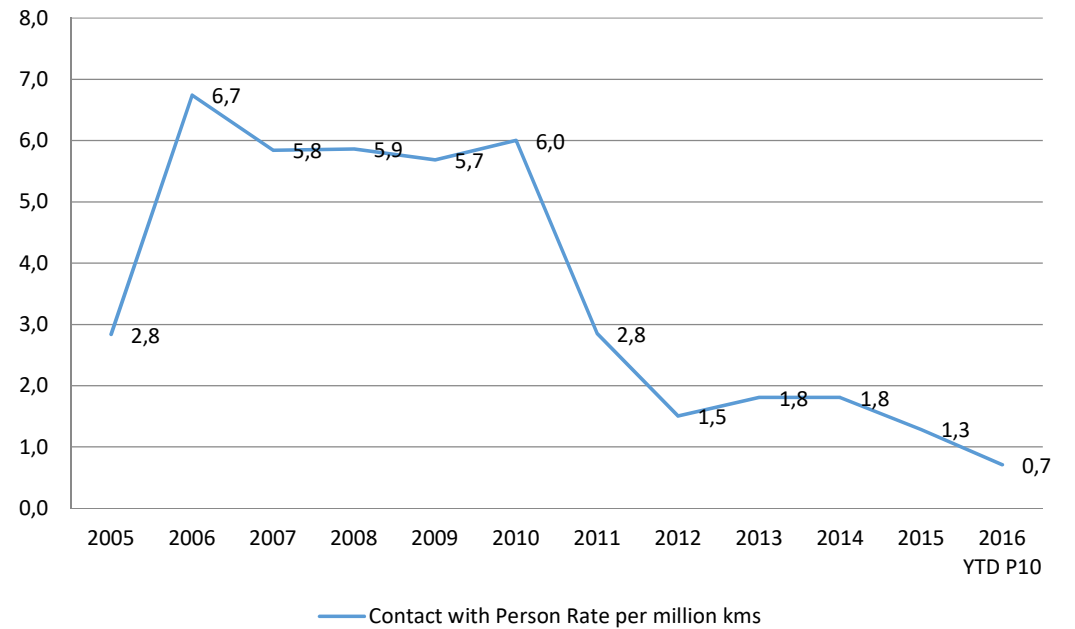
- Pedestrians crossing without green light.
- Pedestrians crossing tramway without looking for tram.
- Pedestrian distracted by using mobile phones/listening to music.
- Pedestrians crossing tramway in unauthorised areas.



### Tram/Pedestrian Contact



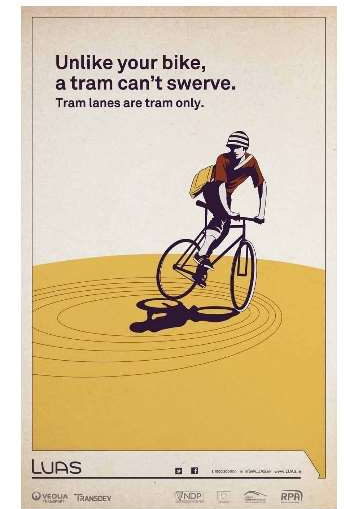
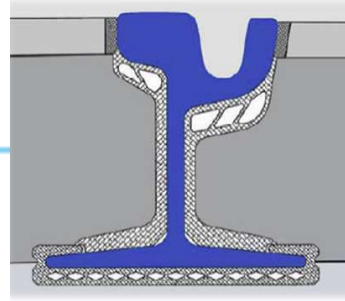
### Tram/Pedestrian Contact per million kms



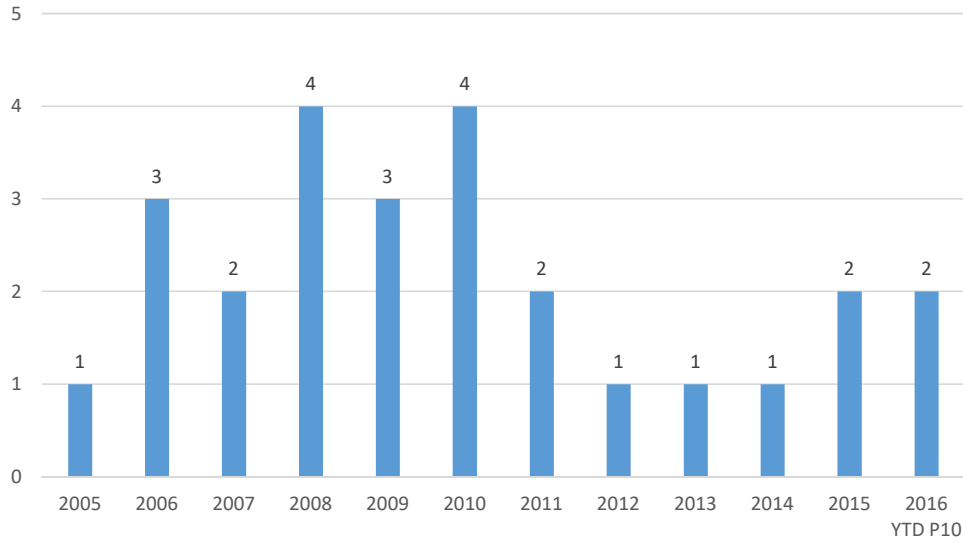


# Cyclists Safety

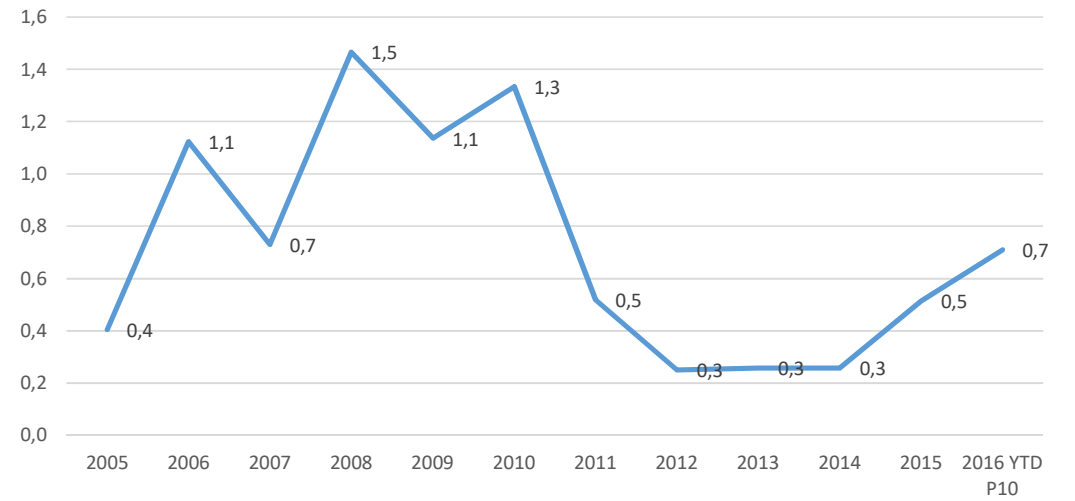
- Contact with tram
- Groove in Rail
- Red Light Infringements
- Cyclists in segregated tramways.



### Cyclists/Tram Contact



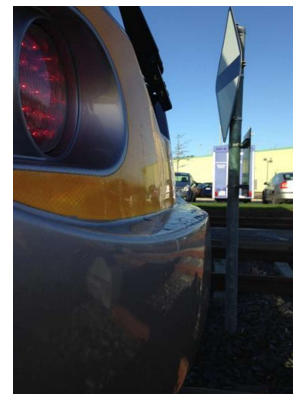
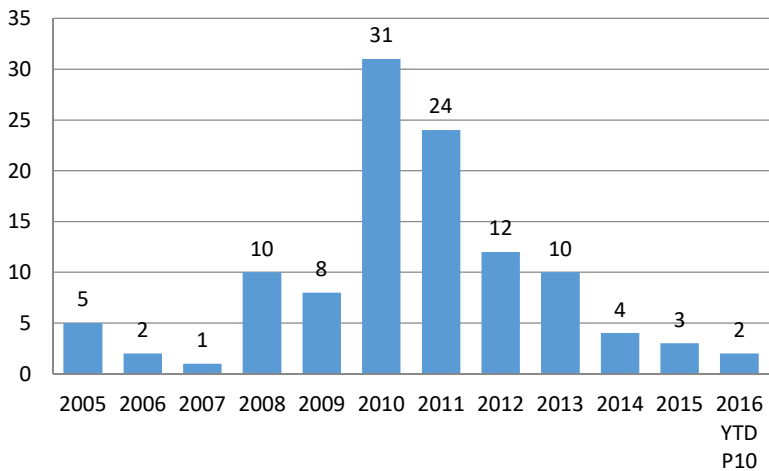
### Contact with Cyclist Rate per million kms



# Tram Scutting / Surfing

- Scutting holding onto tram doors
- Scutting holding onto tram cab wipers

Tram Surfing/Scutting



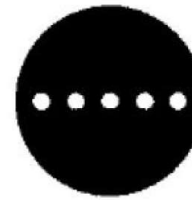
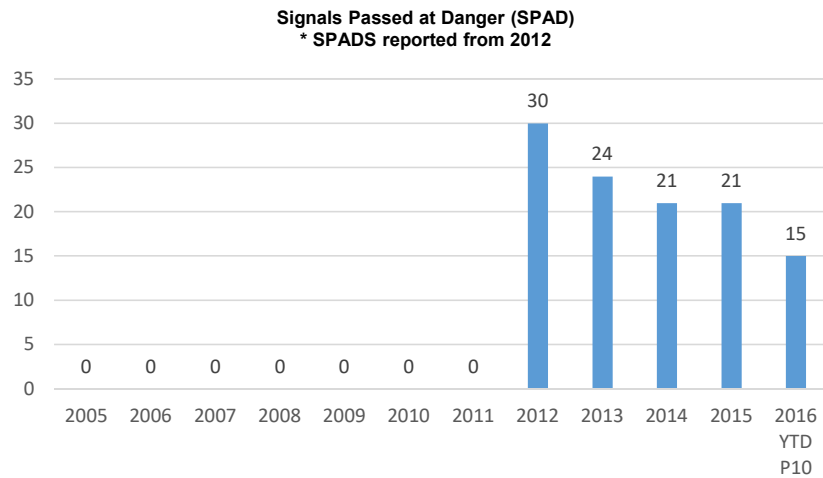




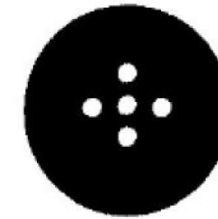


# Signals Passed At DANGER (SPADS)

- A SPAD is where a tram passes without authority a signal displaying a stop indication or stop aspect. These incidents can also be called Signals Passed at Stop (SPAS).

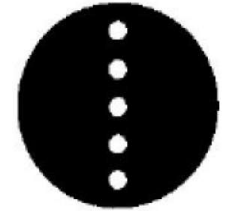


STOP



STOP

Unless unsafe to do so



Proceed Straight

If safe to do so

73 signalled junctions on network  
Approx. 8 million tram passes/year



SPAD Camera under test

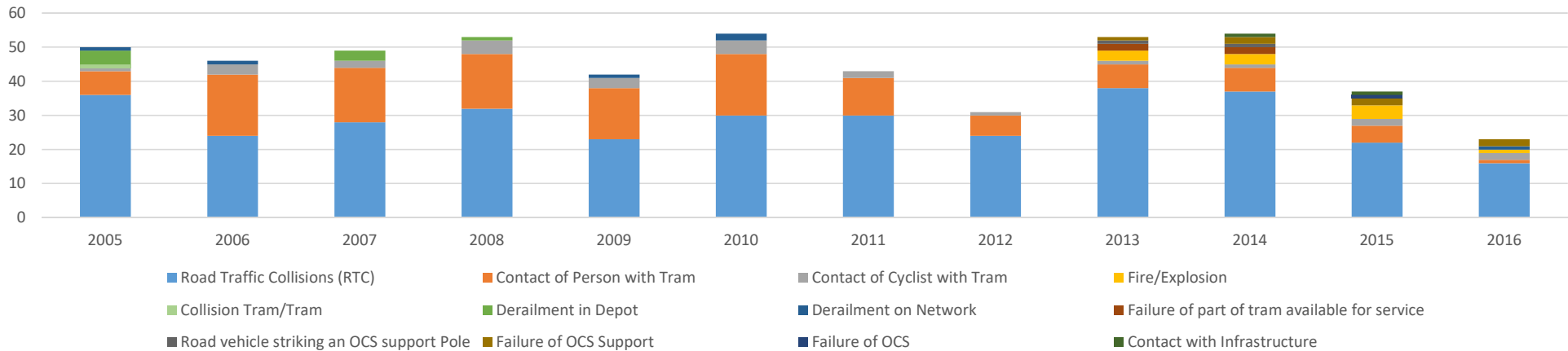
# Road Traffic Collisions (RTC)

- Red Light Infringements at Luas junctions.
- On-street collisions

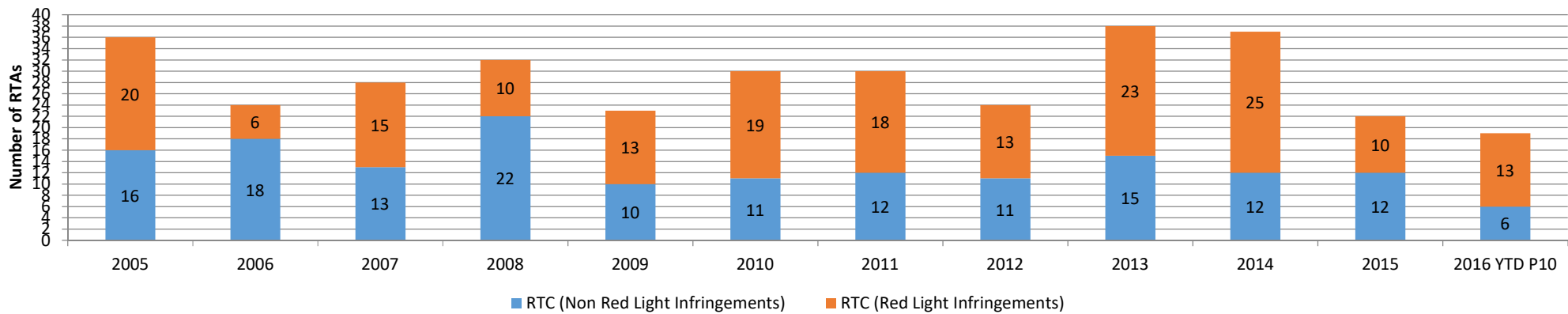


# Luas Incident/Accident Statistics

## Luas Incidents/Accidents



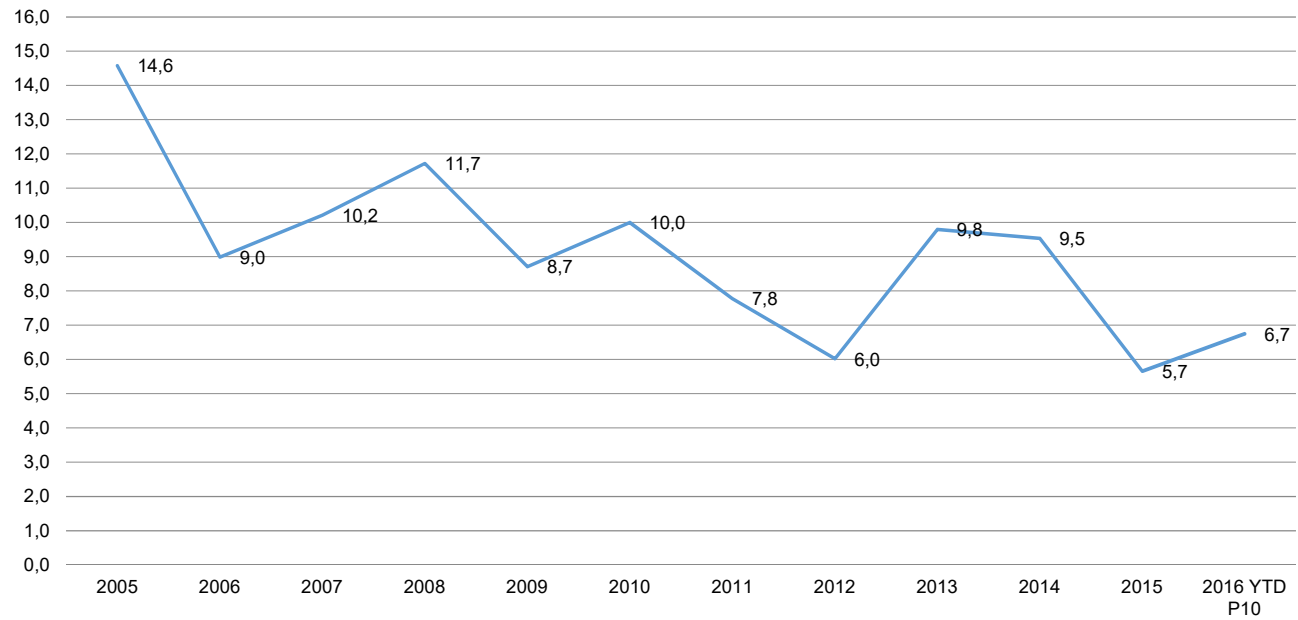
## Road Traffic Collisions (Tram/Road Vehicle)







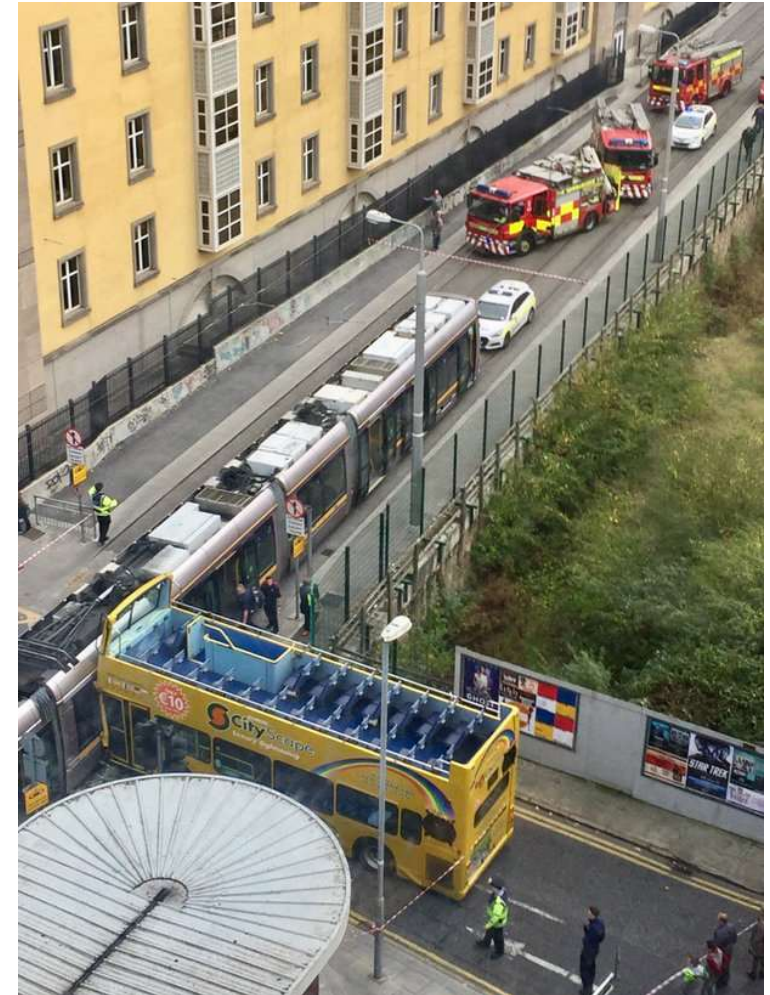
Luas RTC Rate per million kms



— Luas RTC Rate per million kms

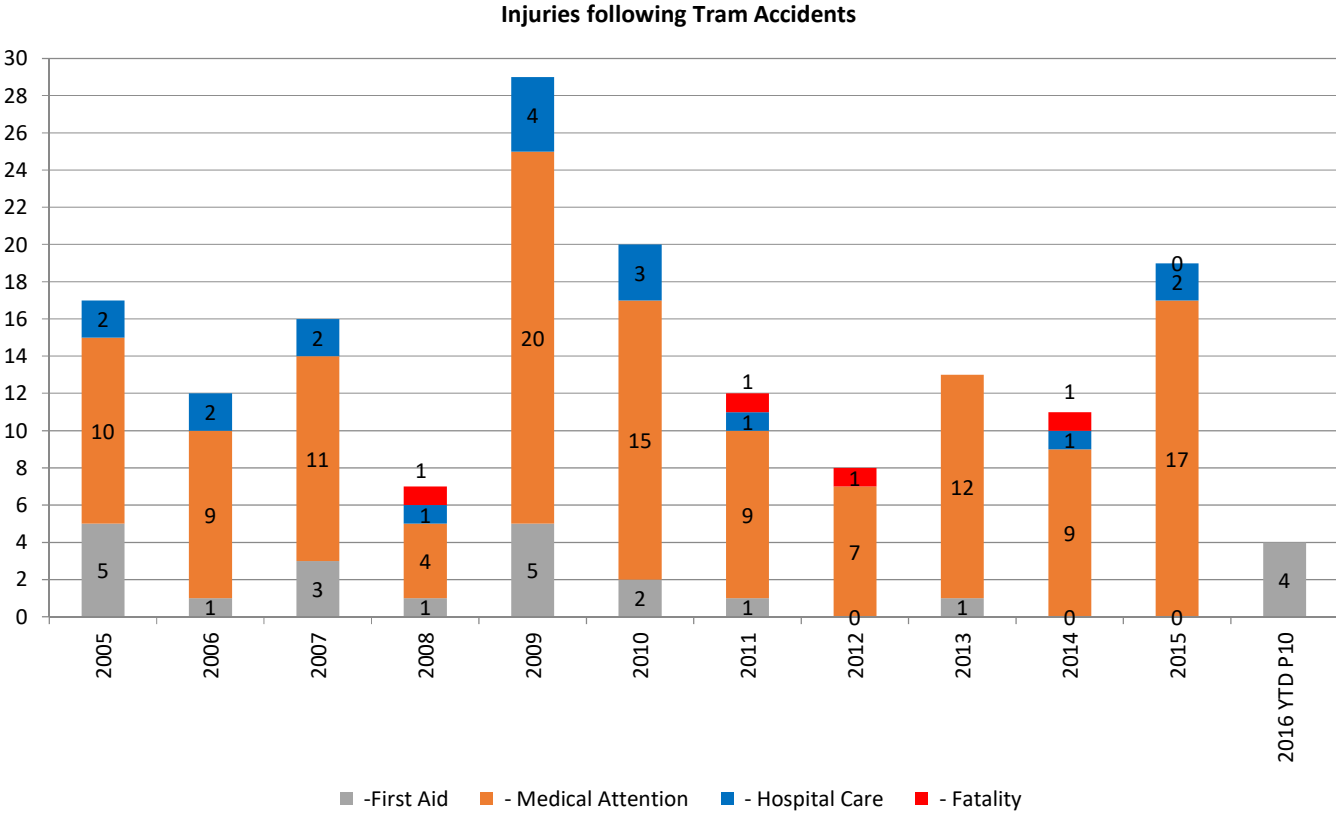


Road Traffic Collision: Friday 28<sup>th</sup> November 2016



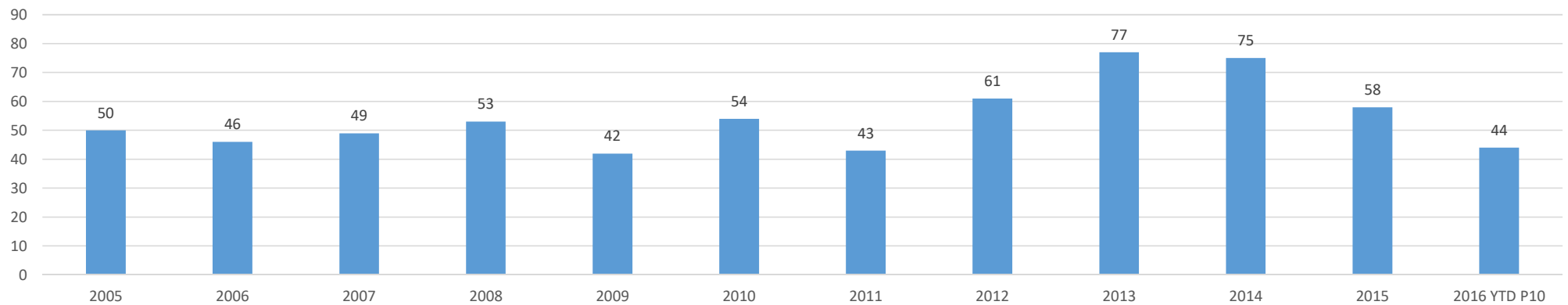


# Luas Safety Statistics

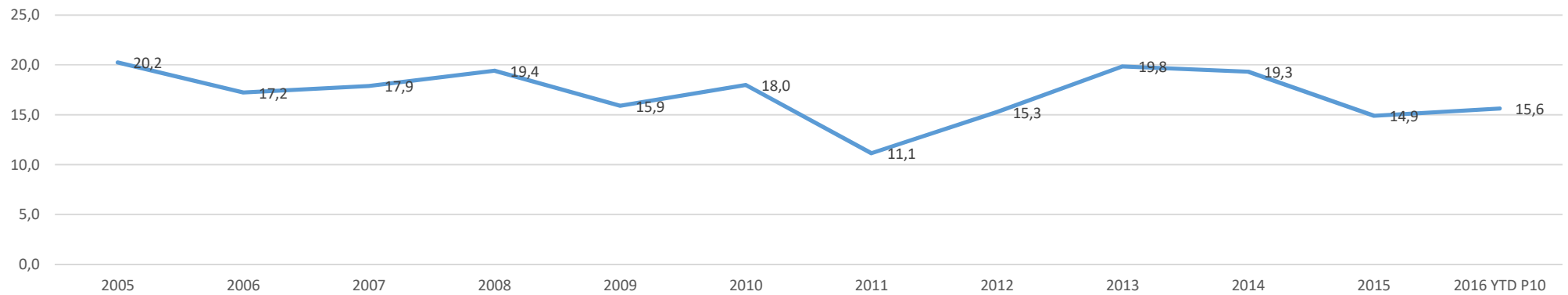


# Luas Safety Statistics

Total Number of Incidents & Accidents



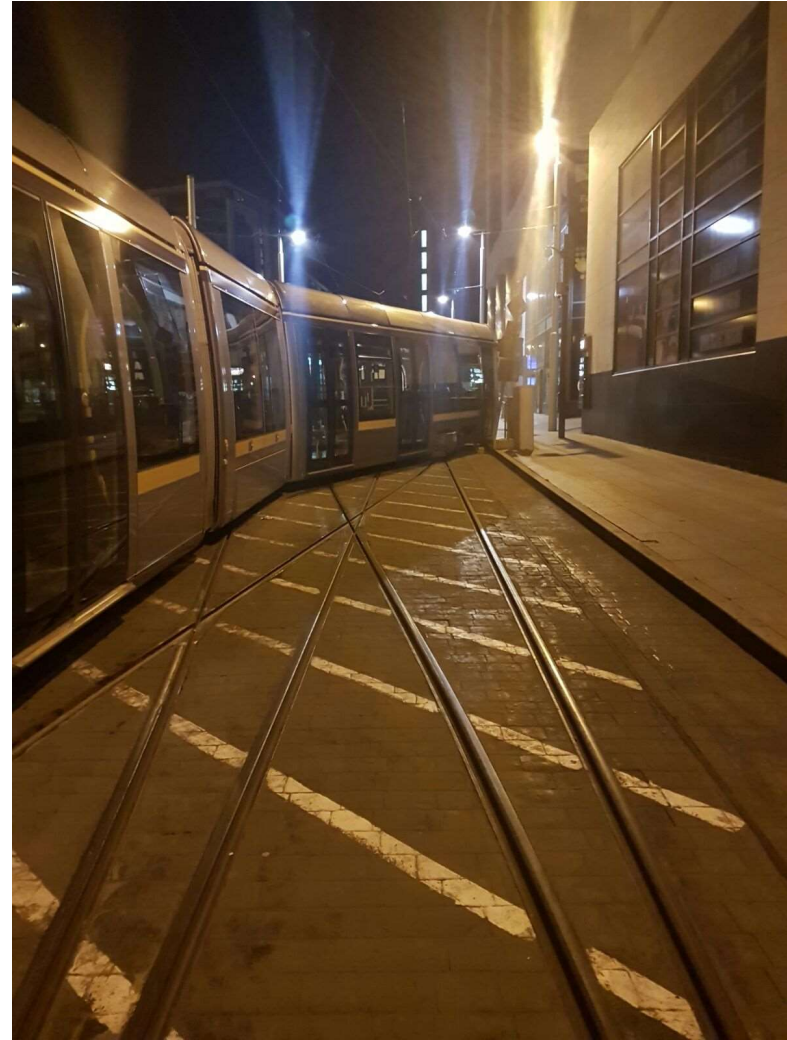
Total Number of Incidents & Accident per million kms











# Luas Safety Initiatives

---

- Safety campaigns:
    - Cyclists awareness for the introduction of tram tracks as a result of Luas Cross City Project.
    - Cyclists
    - Pedestrian
    - Motorist
  - Road User Behaviour Research by the Centre for Innovative Human Systems (CIHS) TCD.
  - Portable CCTV Junction Camera.
  - Continued analysis of near misses/incidents/accidents to identify safety concerns and issues.
  - Ongoing Research into light rail safety.
-

**Thank You**  
**Questions**