

« Go through » red lights rules for cyclists : which applications in tram junctions !?



D.Bertrand – F.Monti, Cerema (France)

In junctions with traffic lights, **all users must stop when « their » light is red...**

However, since a modification of the French road code in November 2010,



The police power may allow **some class(es) of users to go through** if they follow **some particular trajectories**, by adding some **specific signals (sign or light)**



Panonceau M12a



Panonceau M12b



R19d



R19d

Regarding cyclists, the way these signals may be designed and used has been fixed by orders (12/01/2012 and 23/09/2015) :

- a logo identifies the bicycle
- arrows indicate the allowed trajectories

Cyclists may go through the red light to follow these trajectories, but **must yield** to let pedestrians or vehicles who have a green light...

(Static) sign :
a permanent rule...

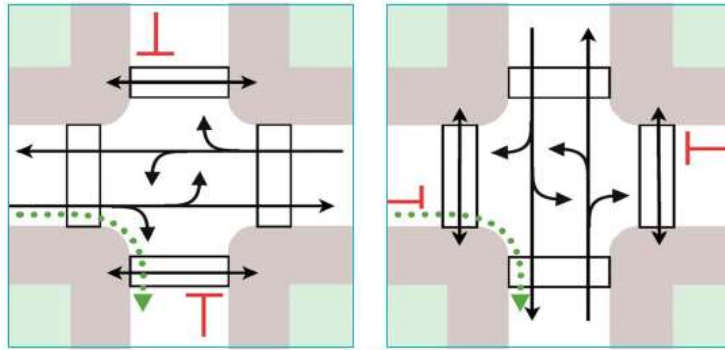


(Flashing) light :
only when activated...

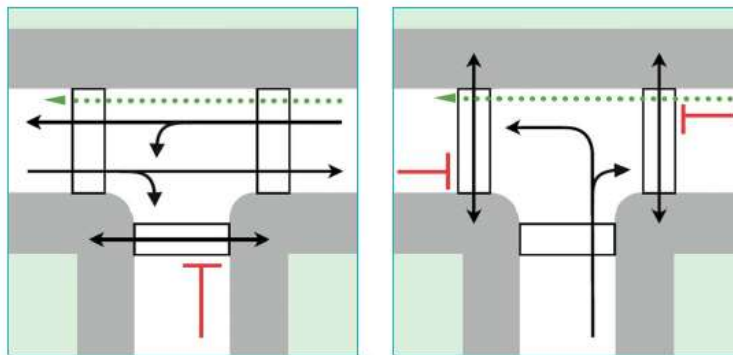


At the beginning: only a few possibilities

- turning to the right

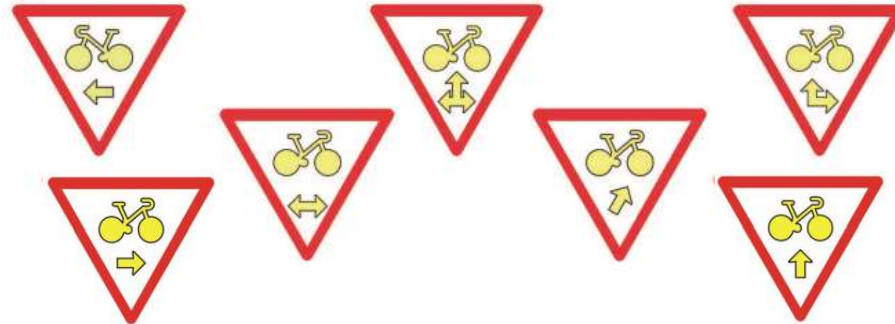


- going straight in T junctions



Since 2015 :

- More trajectories



- More junctions and traffic lights

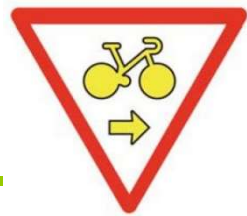


Then, what about tramway (and BHLS) junctions !?...

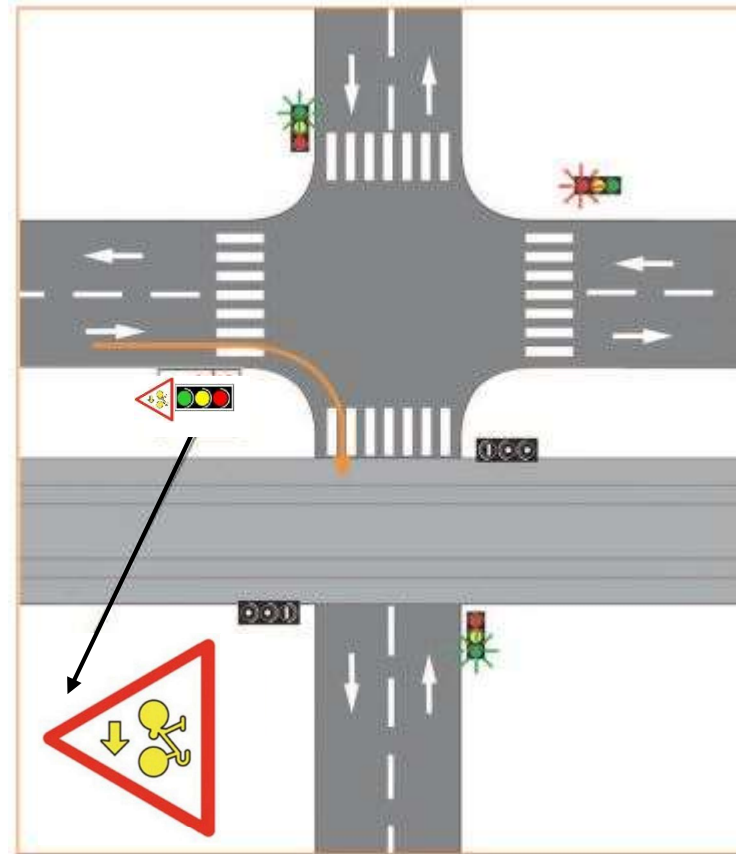
- M12 and R19 not allowed with « Stopping signal » (red flashing light «R24 »)
- But which strategy with the « 3 colors » signals !?



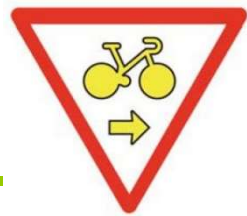
Some examples of applications in tram junctions



M12

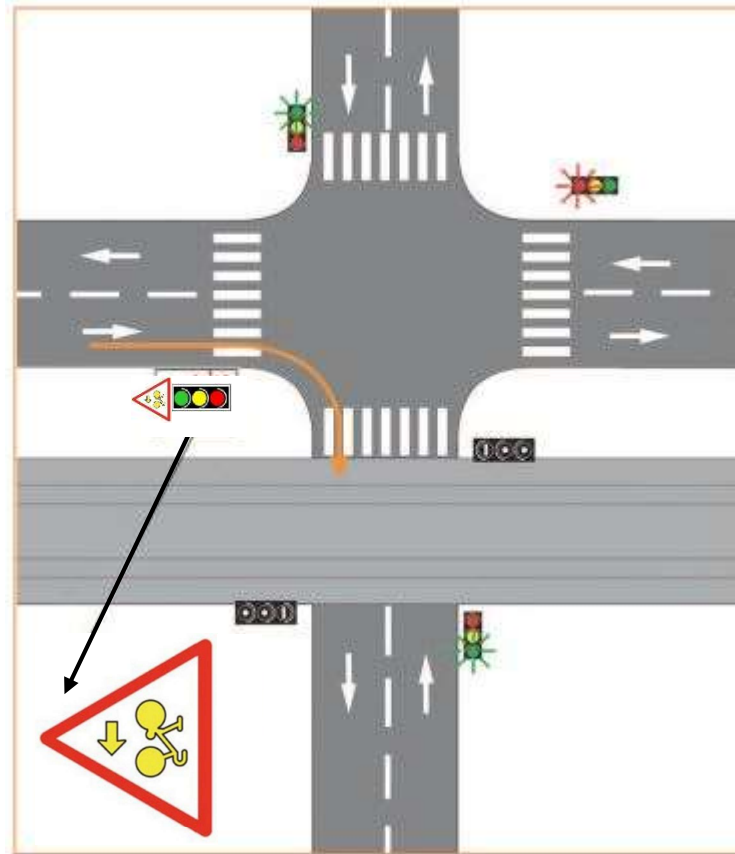


Some examples of applications in tram junctions

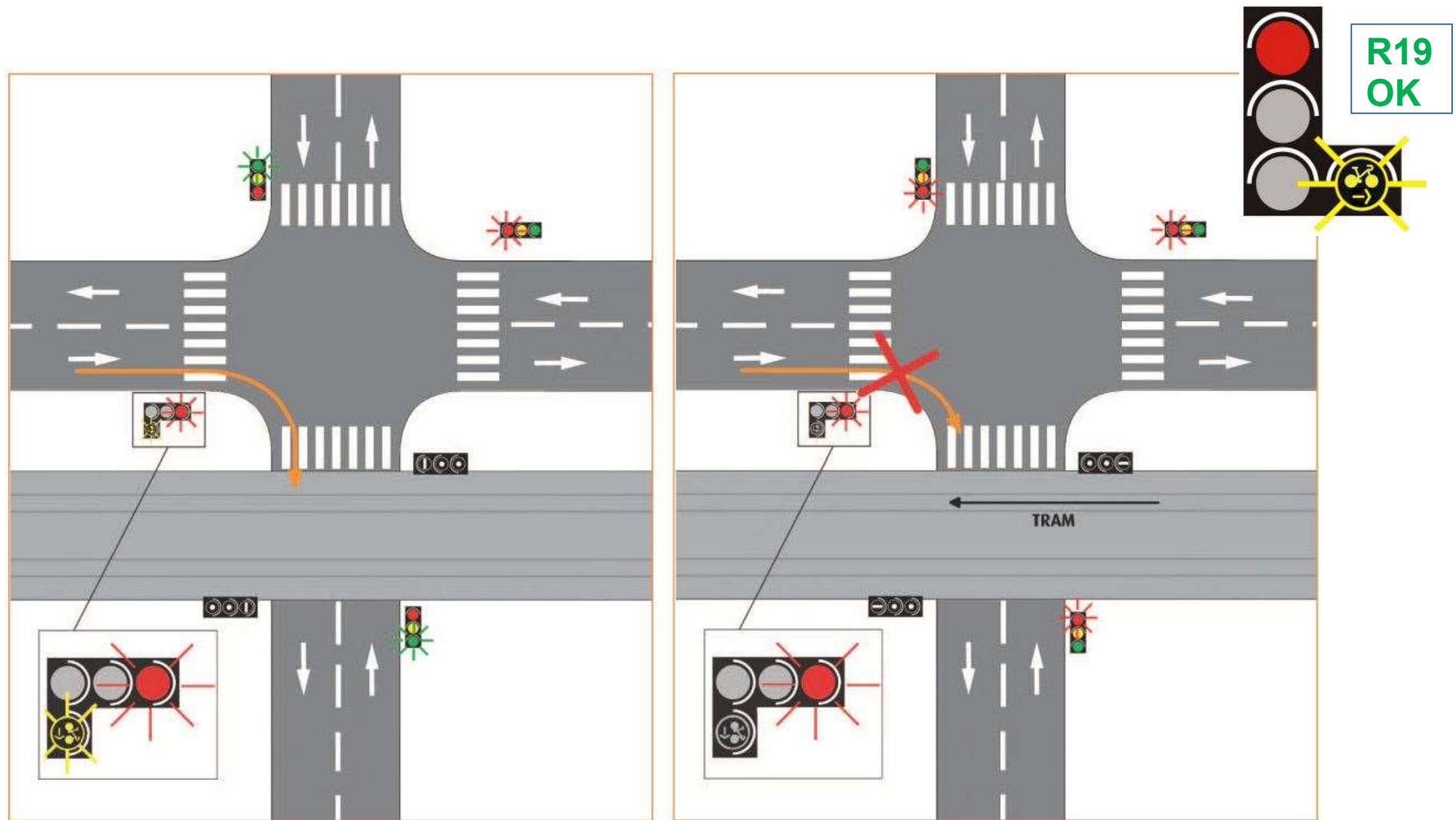


M12

NO ! Conflict with tram

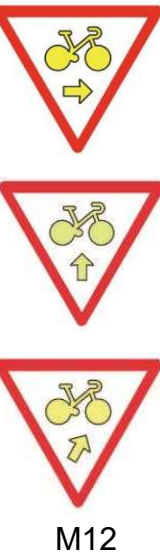
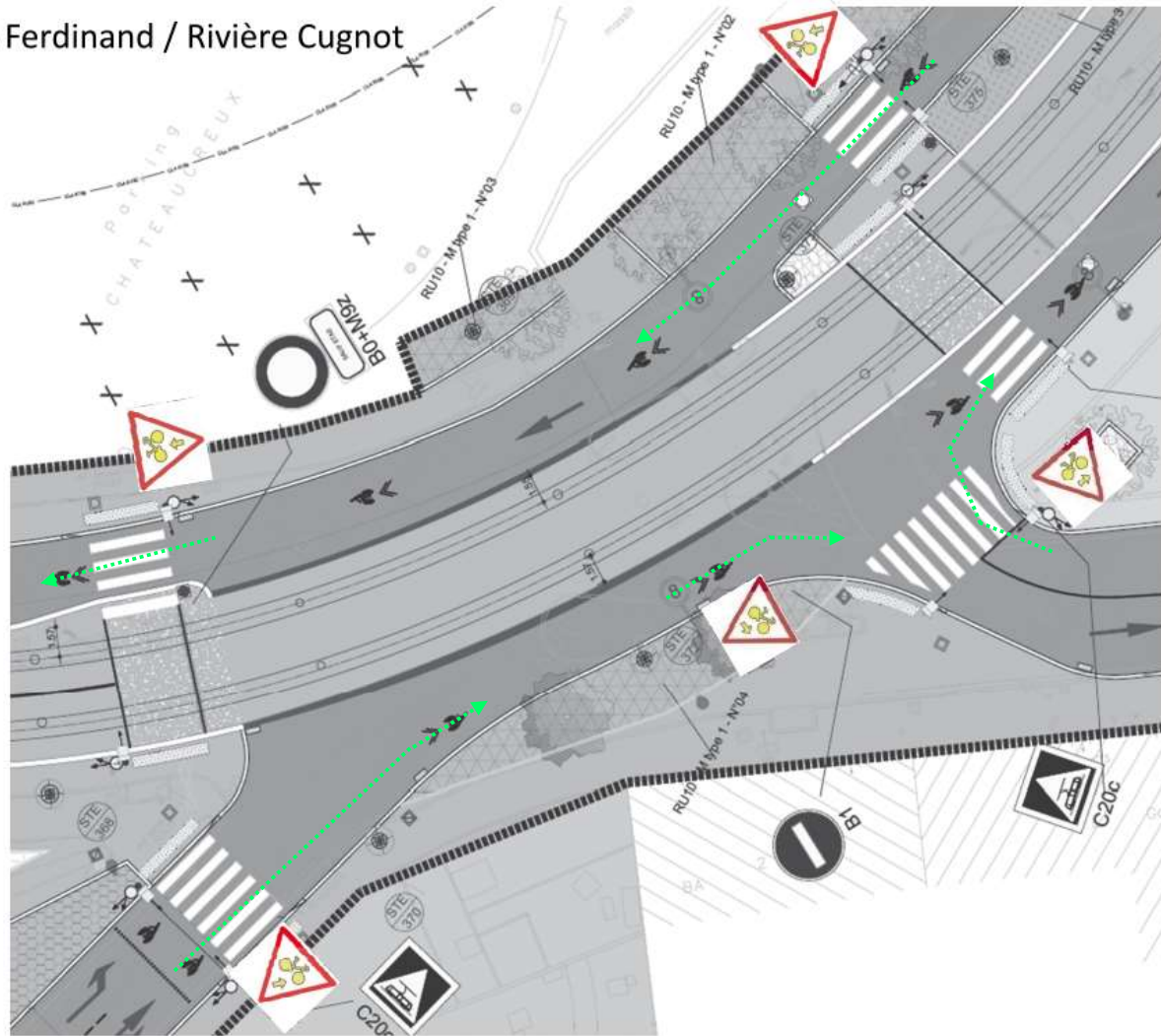


Some examples of applications in tram junctions



Some examples of applications in tram junctions

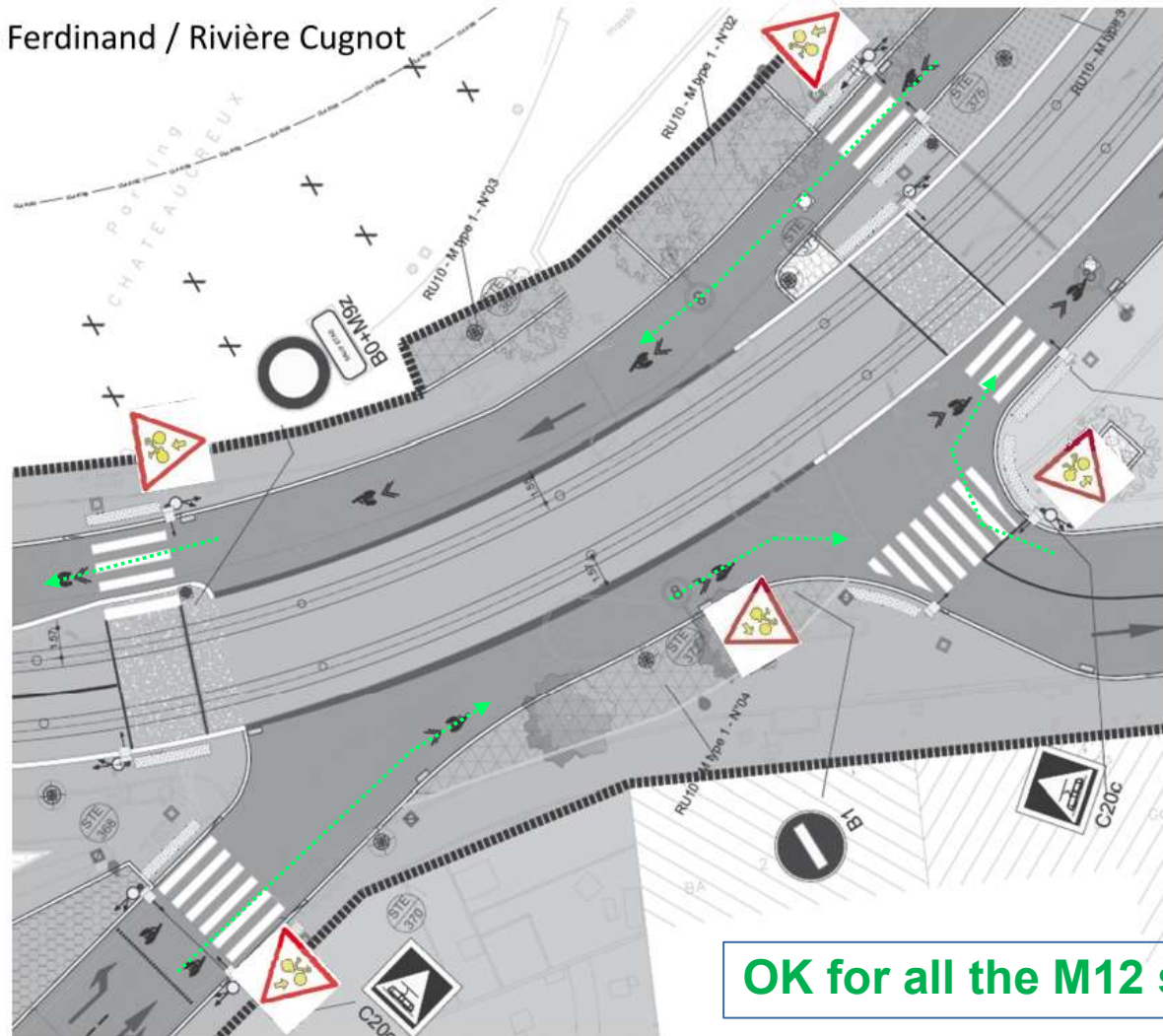
C003 Ferdinand / Rivière Cugnot



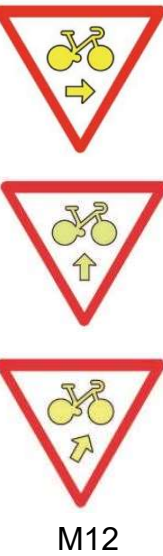
M12

Some examples of applications in tram junctions

C003 Ferdinand / Rivière Cugnot

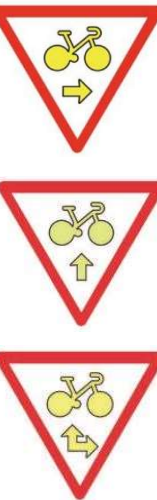
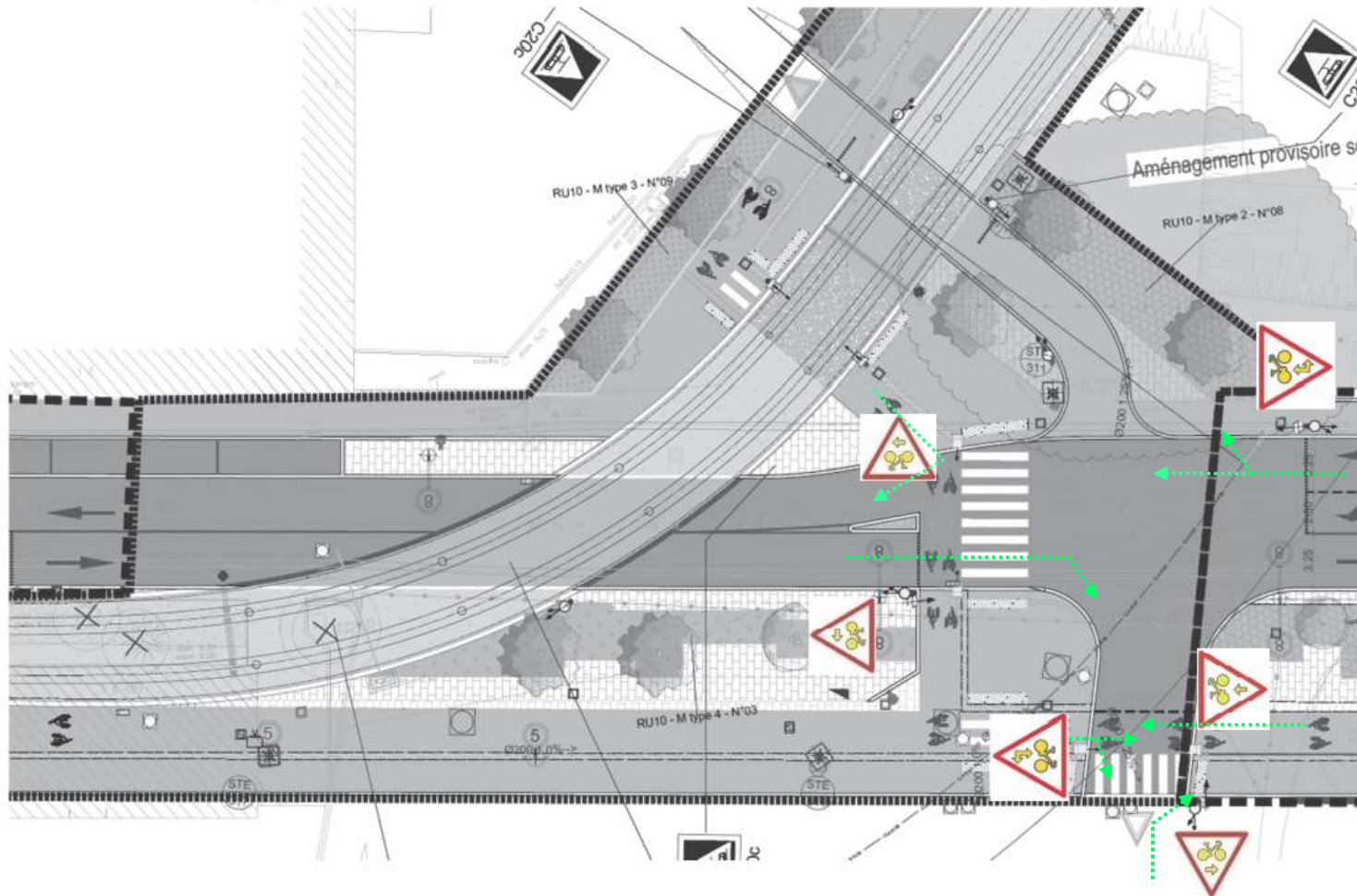


OK for all the M12 signs



Some examples of applications in tram junctions

C007 Tram Marey / Bardot



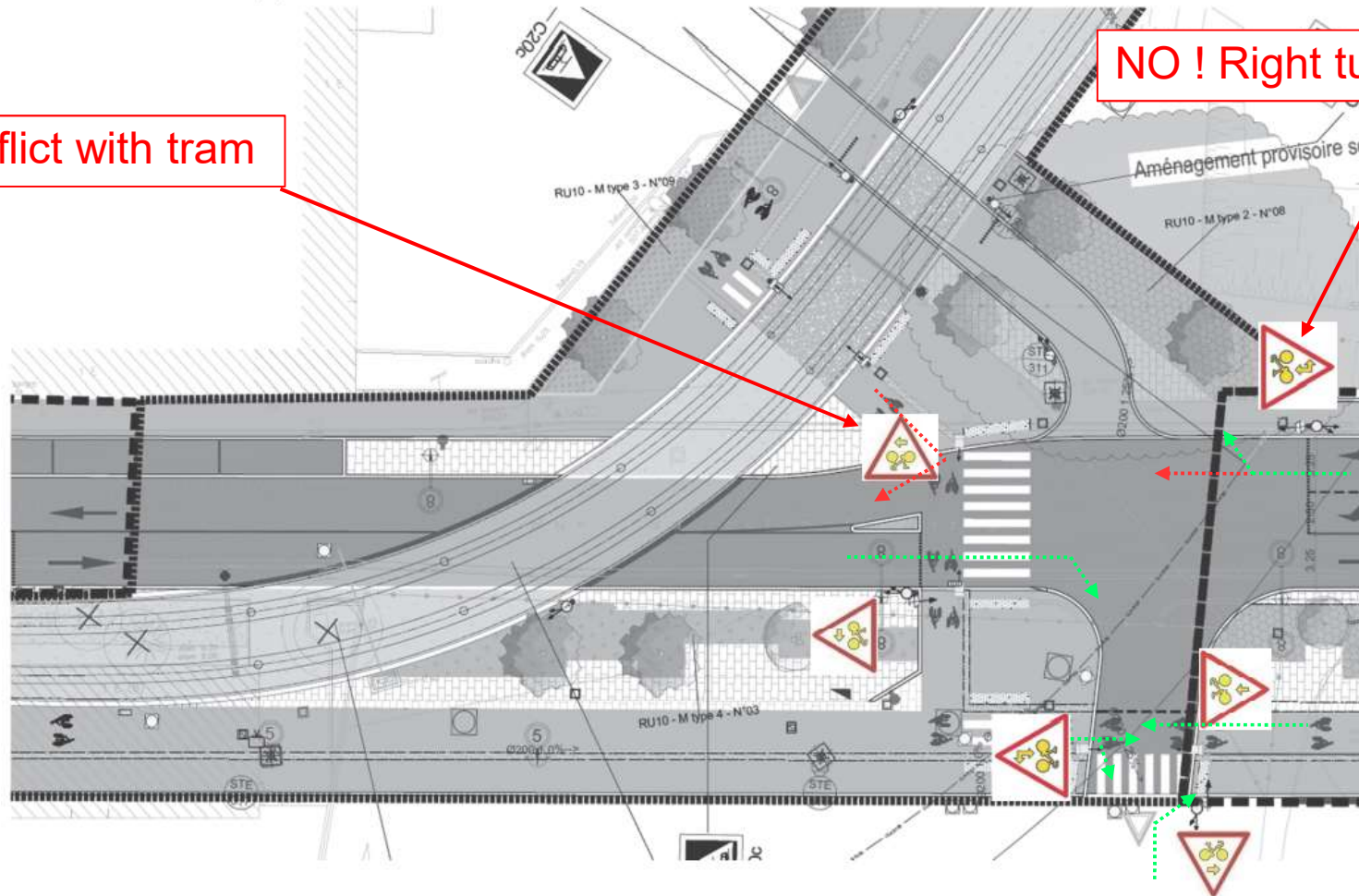
M12

Some examples of applications in tram junctions

C007 Tram Marey / Bardot

NO ! Conflict with tram

NO ! Right turn only

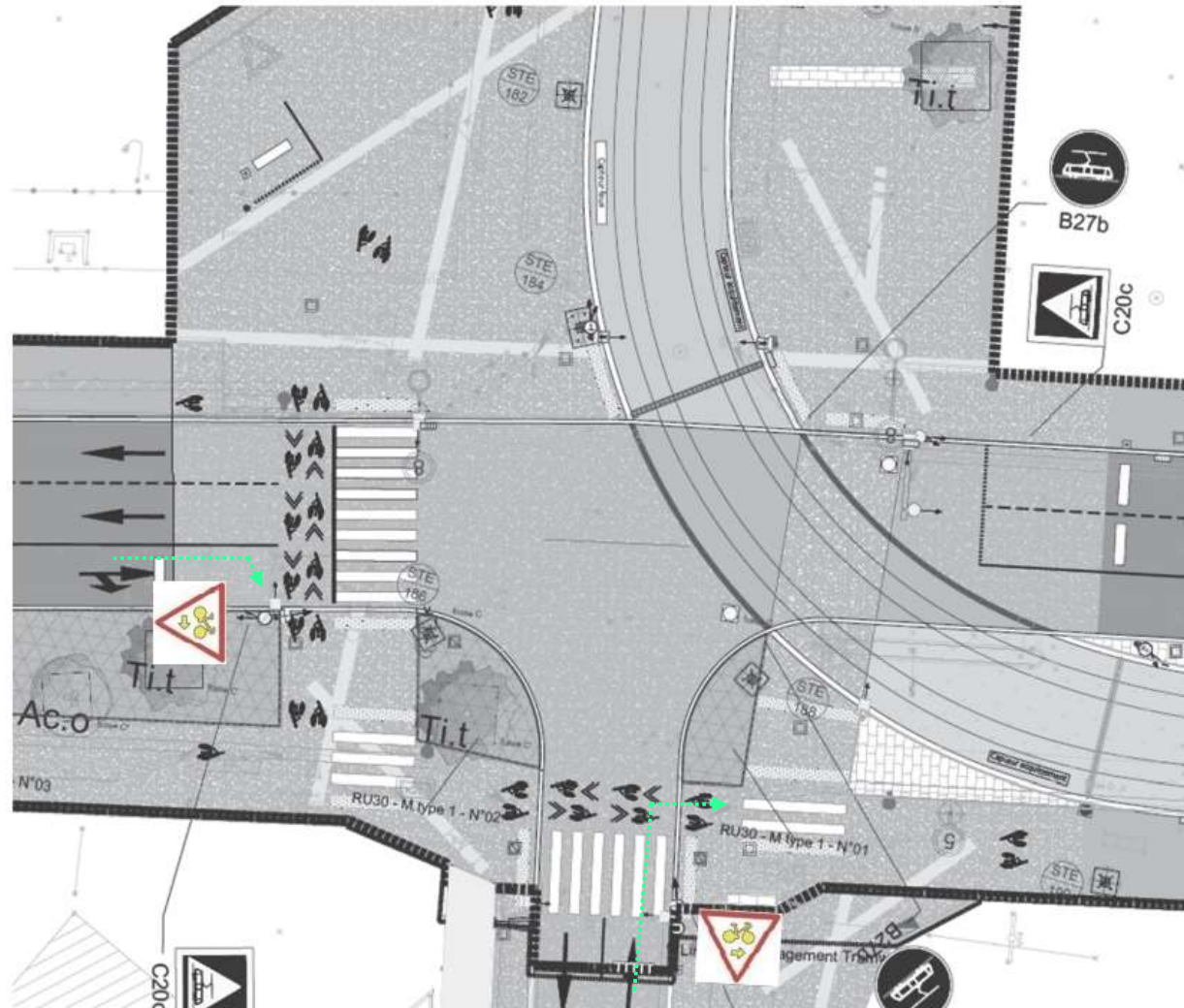


OK for the other M12 signs

Some examples of applications in tram junctions



C016 Kestner Servanton

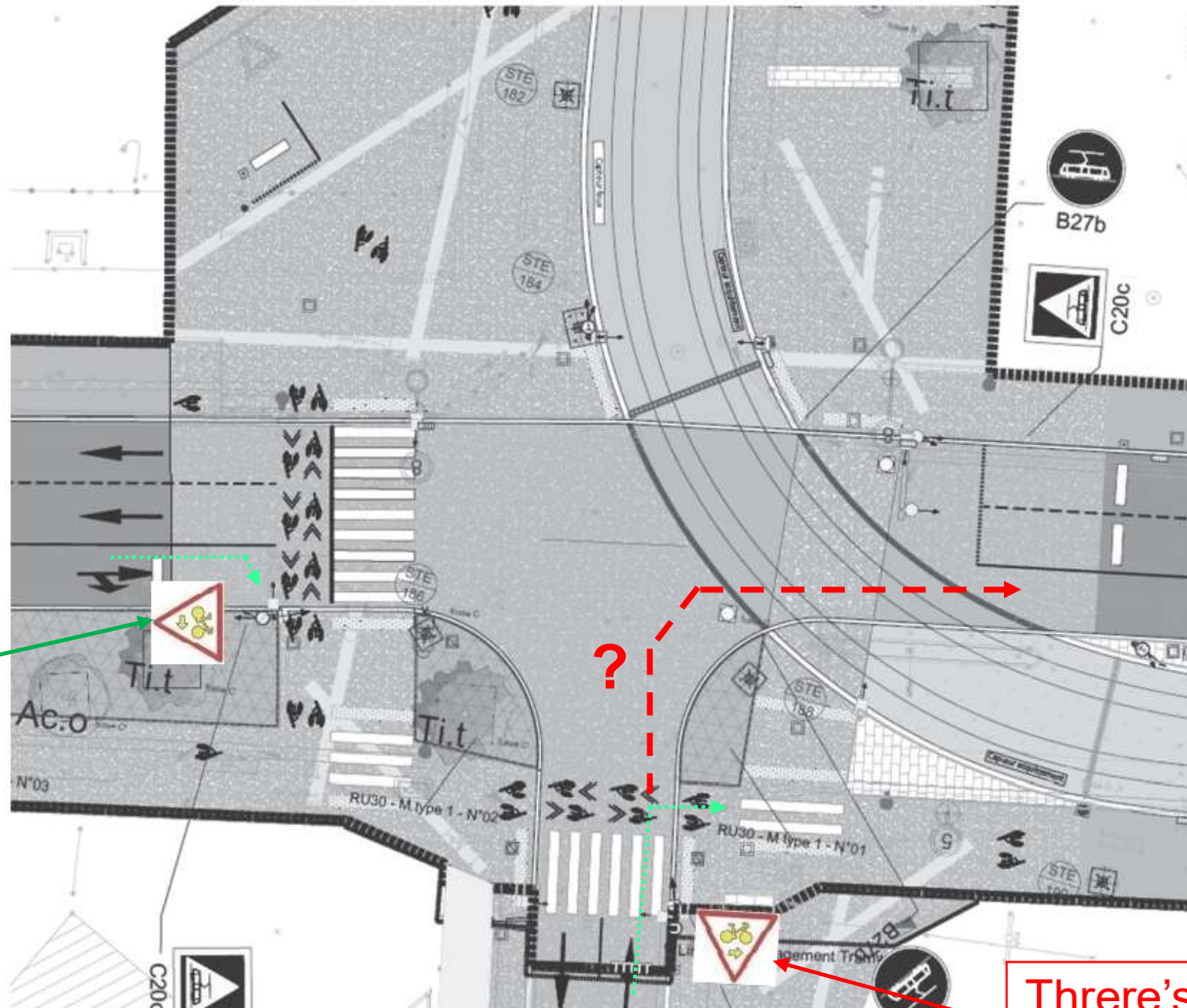


Some examples of applications in tram junctions



M12

C016 Kestner Servanton

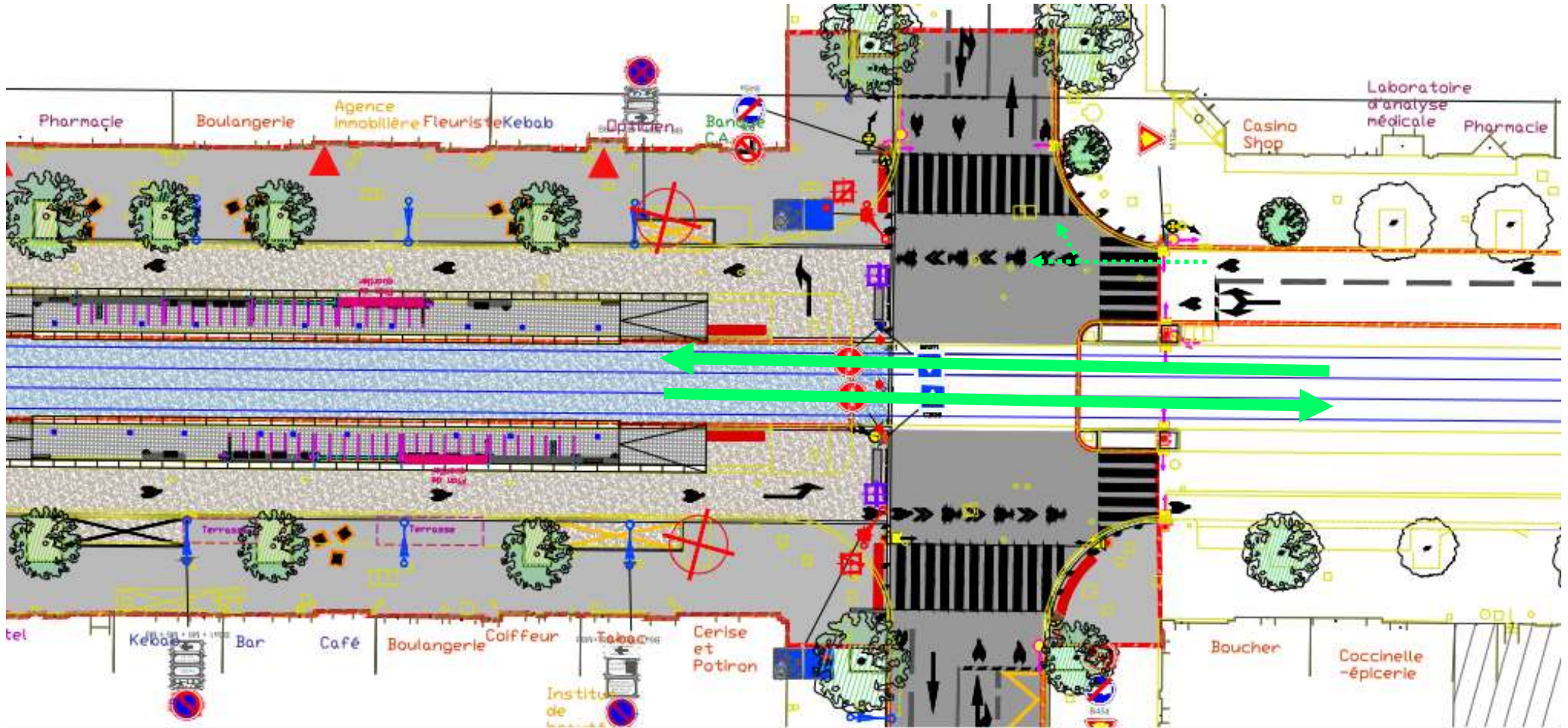


OK

There's a doubt about the cyclist's understanding

Some examples of applications in tram junctions

How to allow straight on and right turn movement for cyclists during the tram phase ?

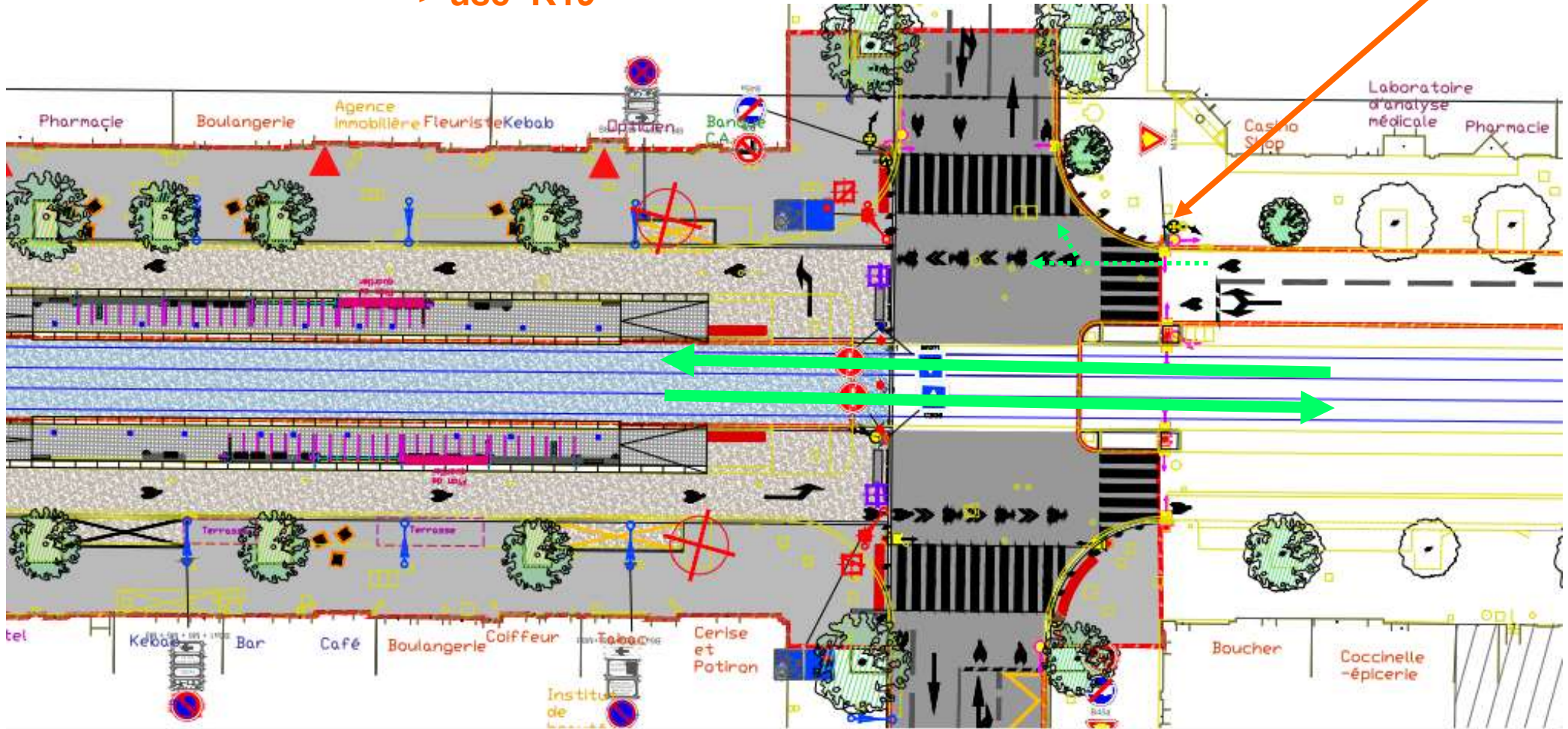
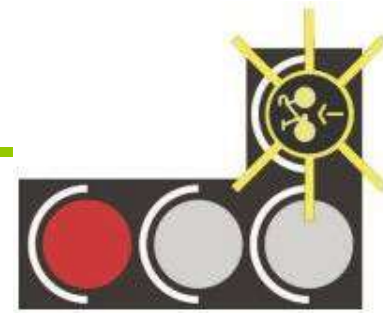


Some examples of applications in tram junctions

How to allow straight on and turn right movement for cyclists during the tram phase ?

=> use R19

Trial period



Thanks for your attention

Contacts :

Dominique BERTRAND / Christian SAUTEL

Cerema Territoires et Ville

Groupe Conception et gestion des réseaux

2 rue Antoine Charial – CS 33927 – 69426 Lyon cedex 03

Tél : 04 72 74 58 48 / 04 72 74 59 46

Mel : dominique.bertrand@cerema.fr / christian.sautel@cerema.fr

Franck MONTI

Cerema Méditerranée

Service Aménagement, Réseaux et Transports Urbains

Pôle d'activités – Rue Albert Einstein – CS 70499 - 13593 Aix-en-Provence cedex 3

Tél : 04 42 24 77 51

Mel : franck.monti@cerema.fr