

## Besançon Bridge





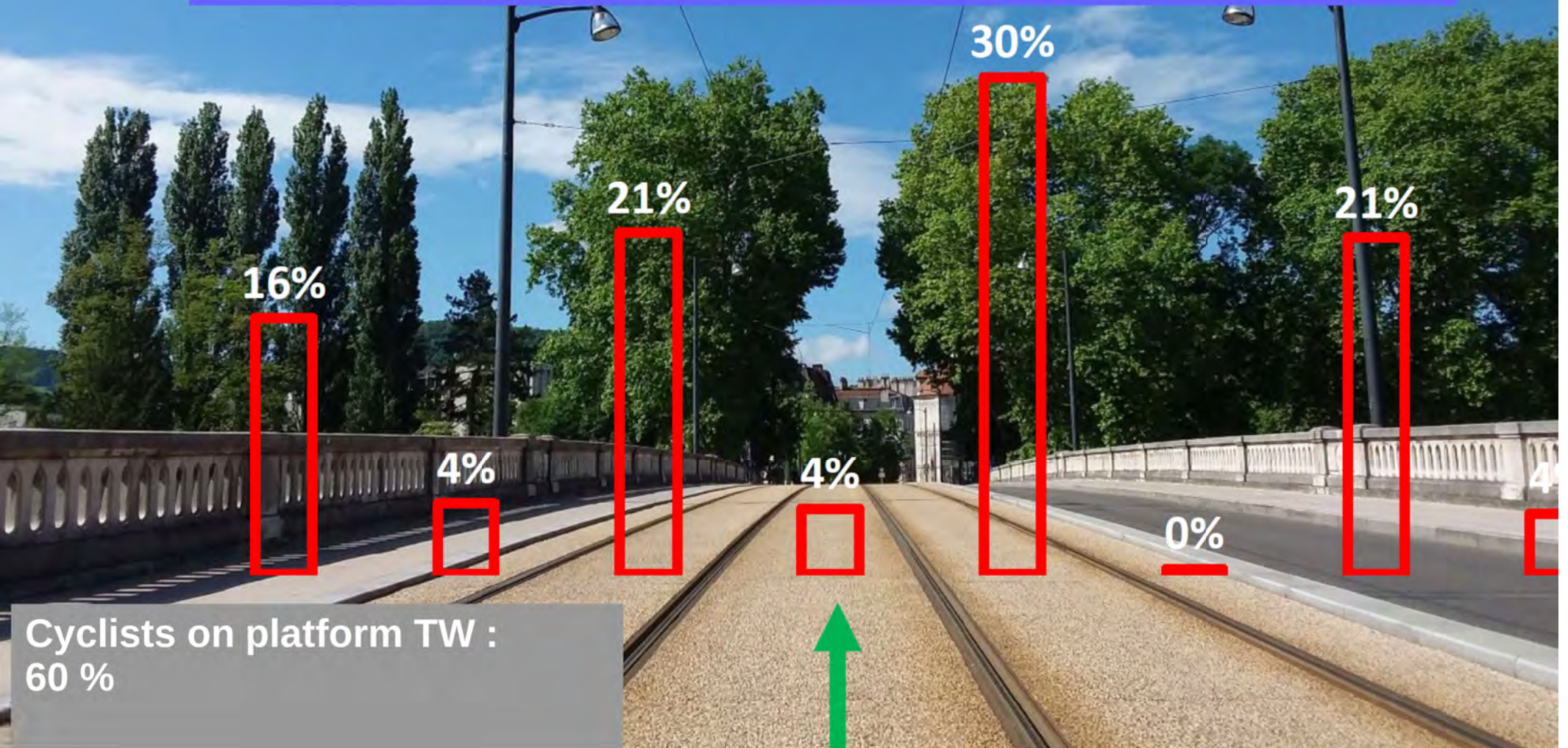
# Where do cyclists ride on the bridge ?

10 hours of observation

- 2x2 hours on the site
- 2x3 hours of video exploitation

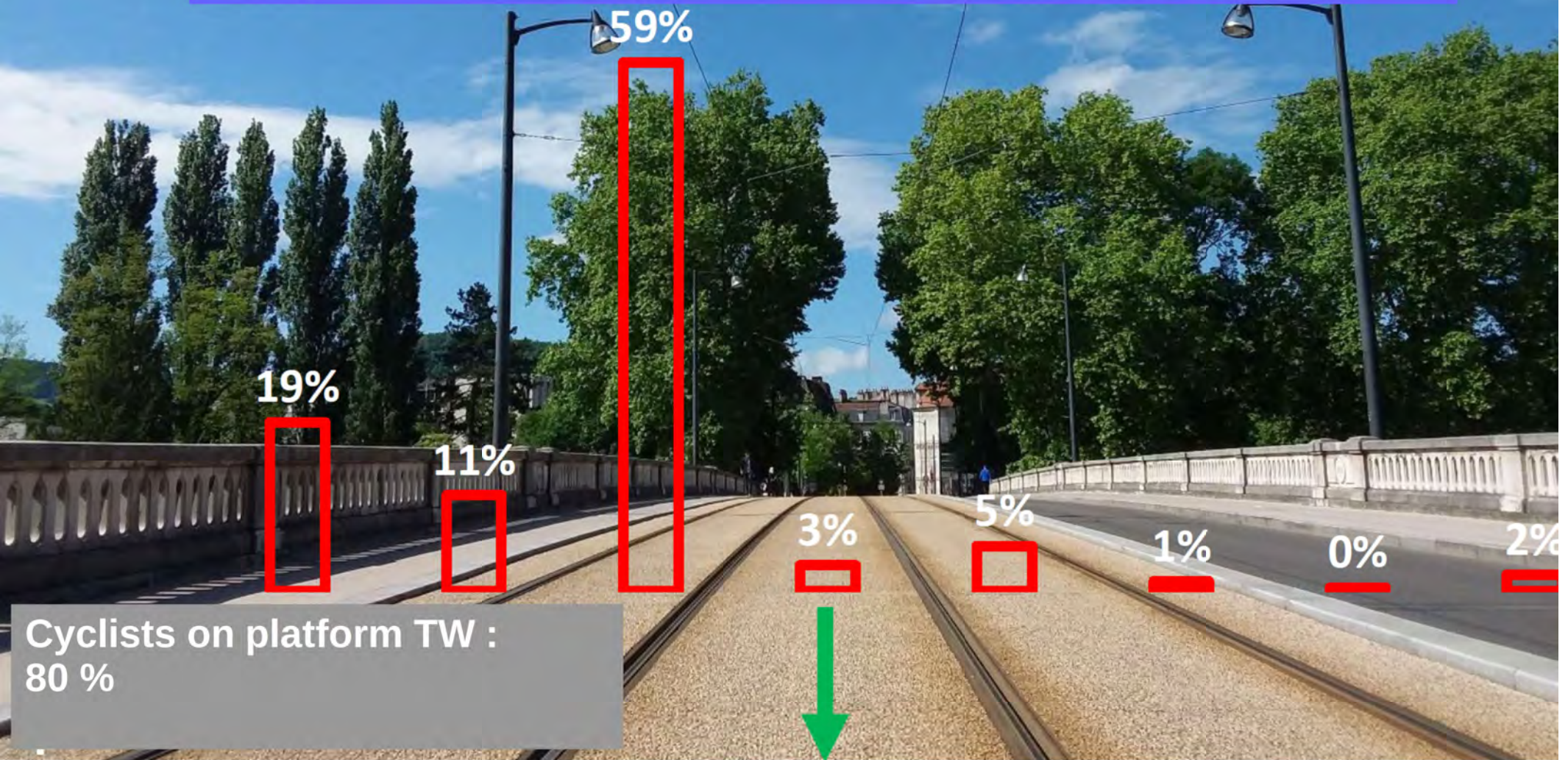


# Cyclists riding to center town (n=325)





# Cyclists riding to railway station (n=280)



Cyclists on platform TW :  
80 %

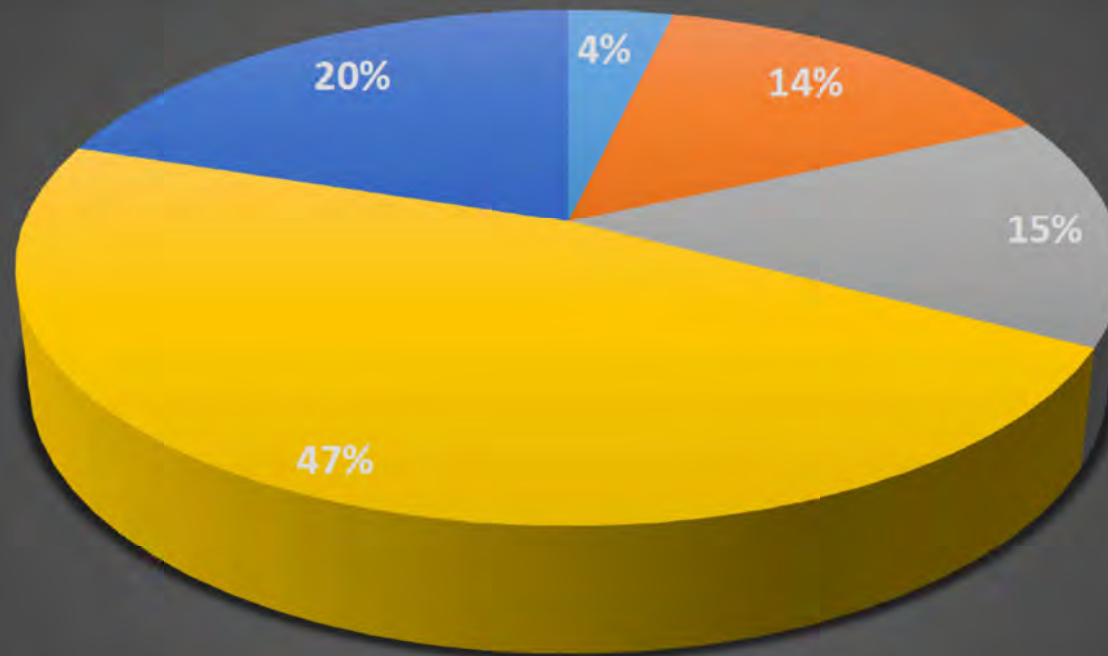


# Point of view of cyclists

A perspective view of a paved road with tram tracks, lined with trees and a cloudy sky. The road is flanked by a white balustrade on the right and a row of tall, thin trees on the left. The sky is overcast with grey clouds.

- Period of survey : may 23-24, 2018
- 60 individual interviews

When you ride on the bridge, what do you think is the most dangerous ?



■ Other cyclists

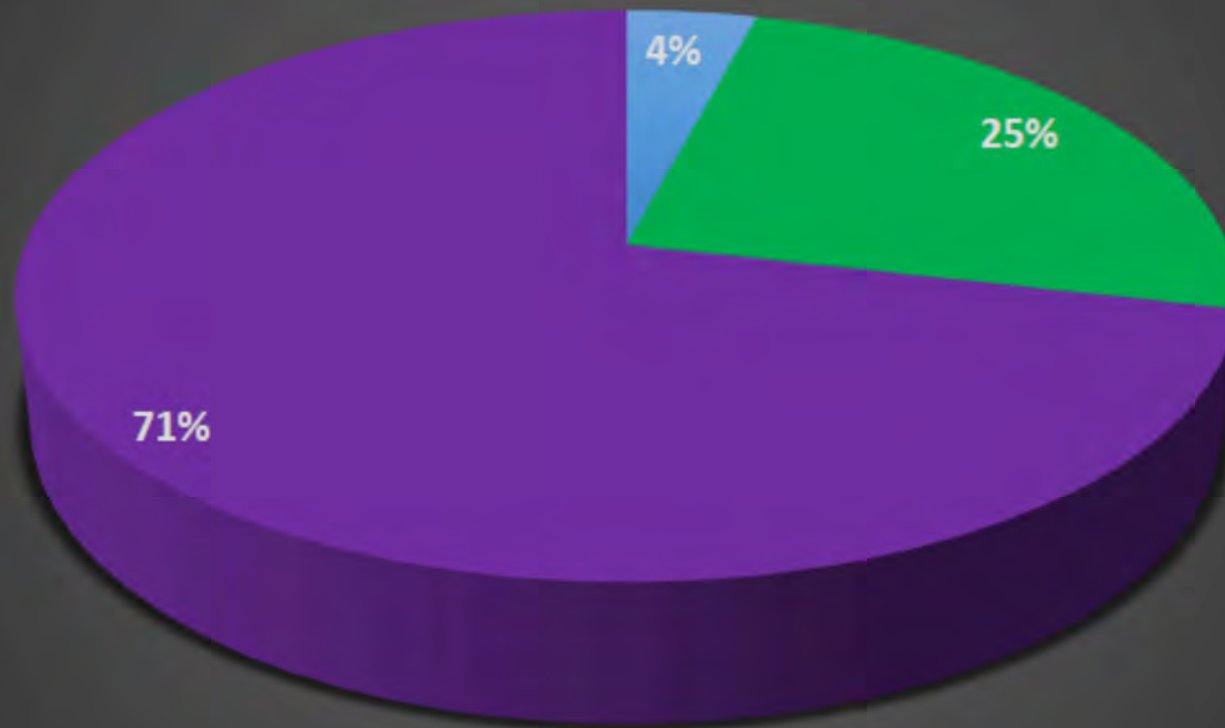
■ Tramways

■ Motorized vehicles

■ Pedestrians

■ Tramway rails

Do you think you can ride on the platform ?



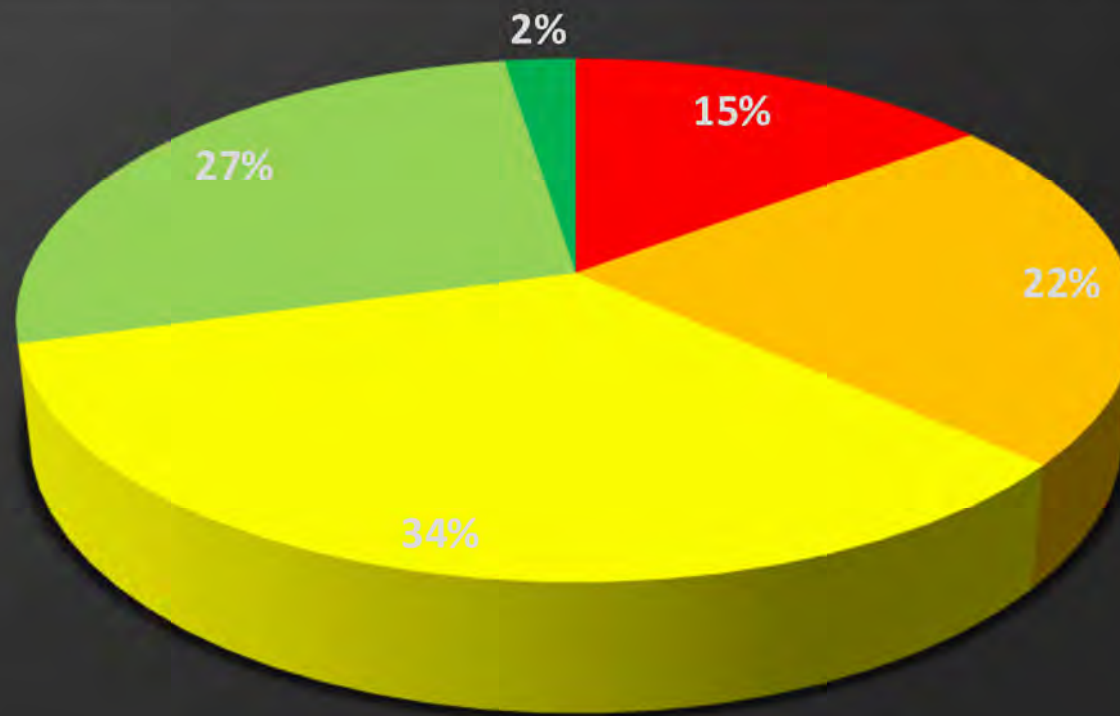
■ It's allowed

■ It's forbidden

■ It's forbidden but tolerated



Your feeling about the « cohabitation » with vehicles (1=very bad ; 5=very good) ?



■ 1

■ 2

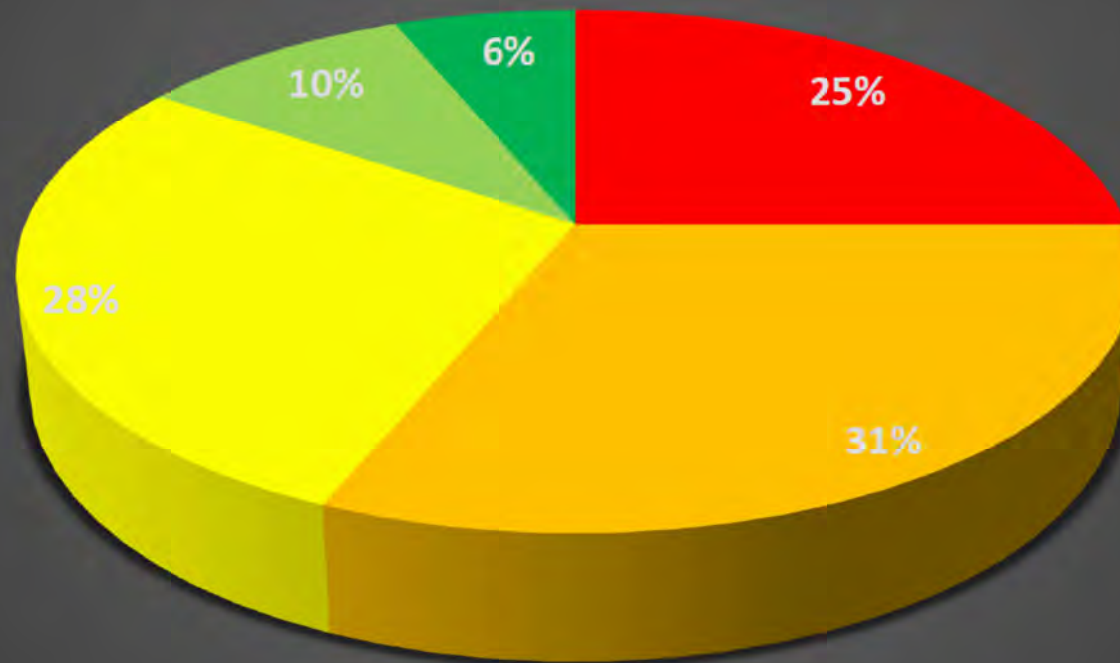
■ 3

■ 4

■ 5



Your feeling about the « cohabitation » with pedestrians (1=very bad ; 5=very good) ?



■ 1

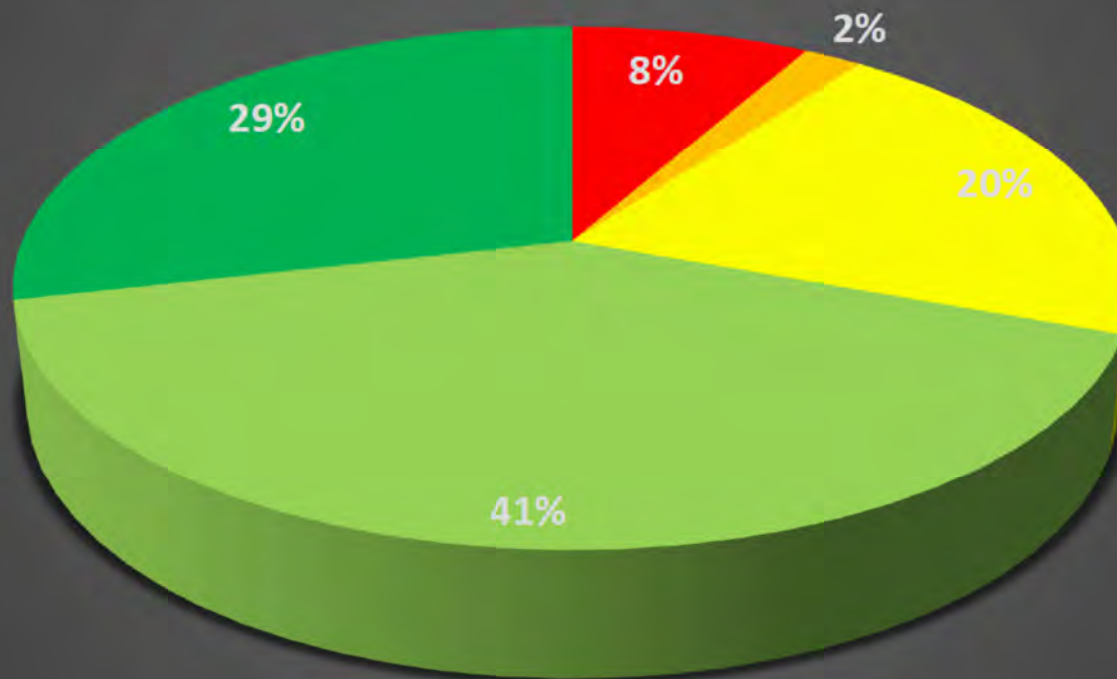
■ 2

■ 3

■ 4

■ 5

Your feeling about the « cohabitation » with tramway (1=very bad ; 5=very good) ?



■ 1

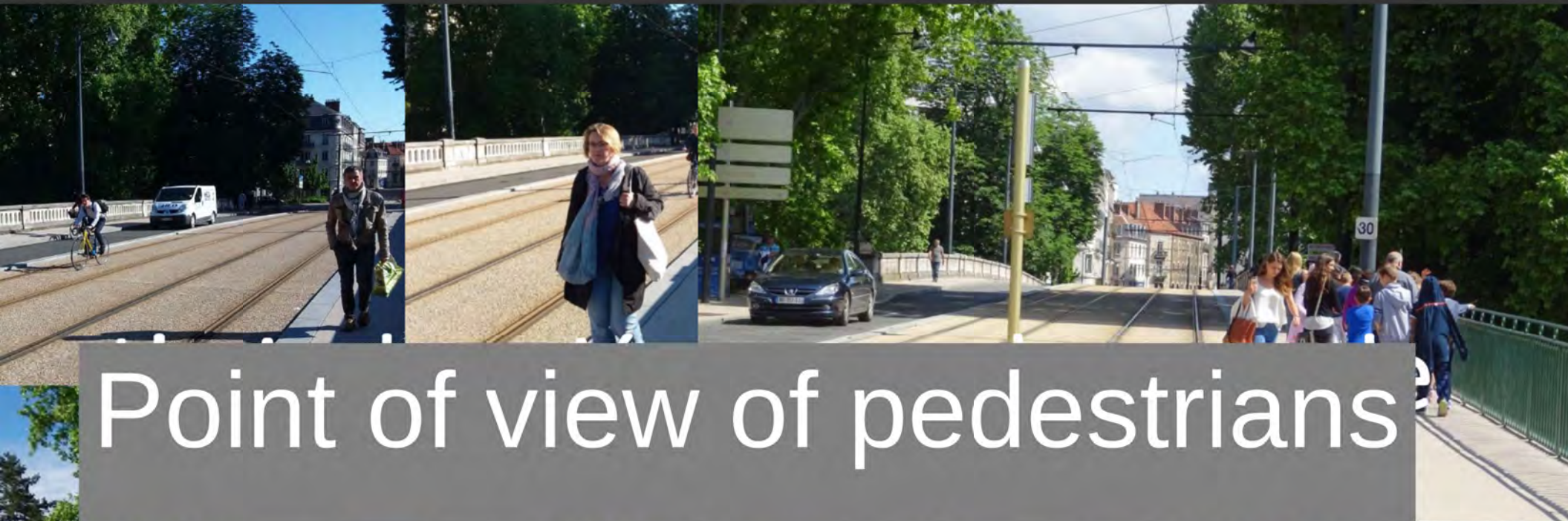
■ 2

■ 3

■ 4

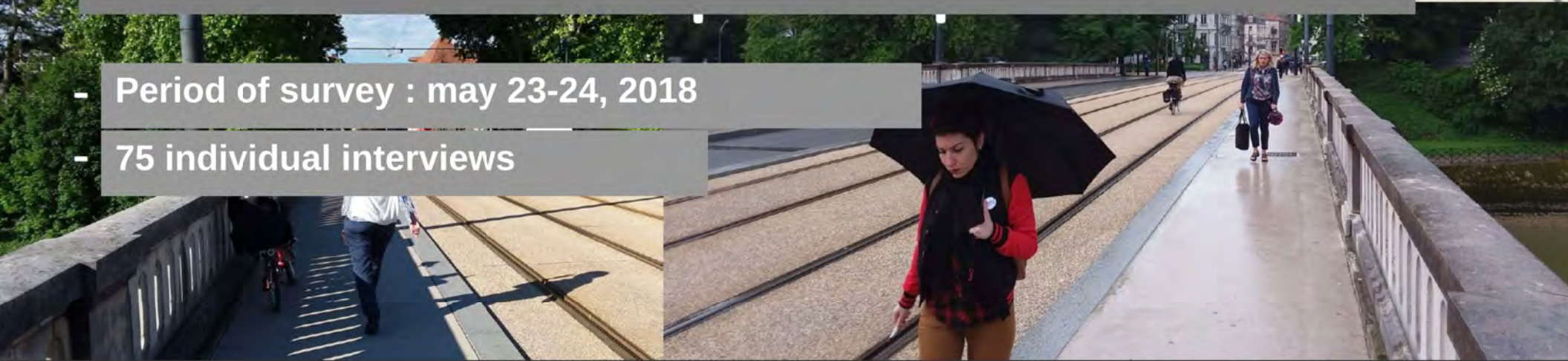
■ 5



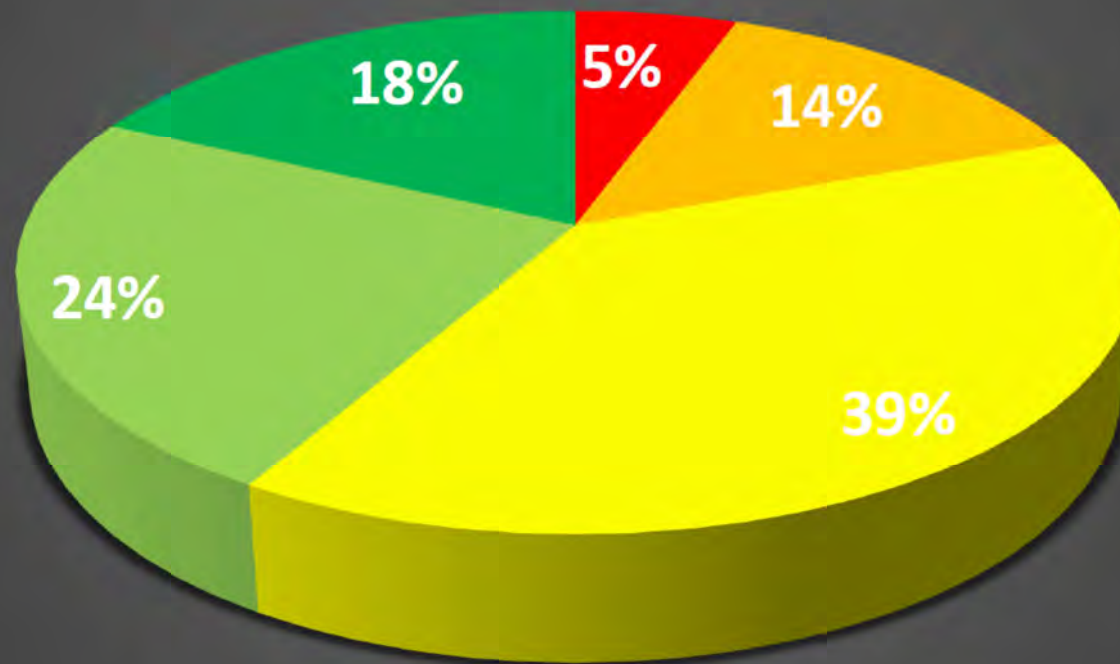


# Point of view of pedestrians

- Period of survey : may 23-24, 2018
- 75 individual interviews



Your feeling about the « cohabitation » with cyclists (1=very bad ; 5=very good) ?



■ 1

■ 2

■ 3

■ 4

■ 5



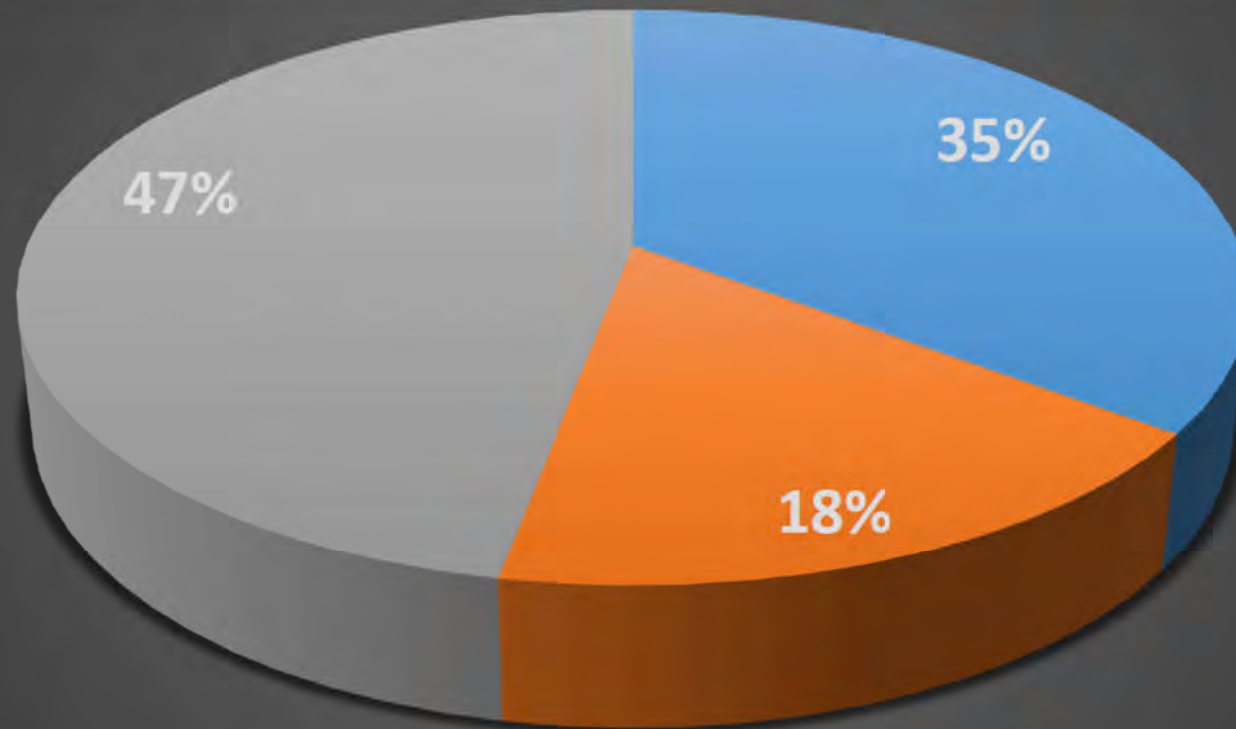
# Point of view of tram drivers

- Period of survey : may 24, 2018

- 17 individual interviews



How do you feel the presence of pedestrians along the platform ?



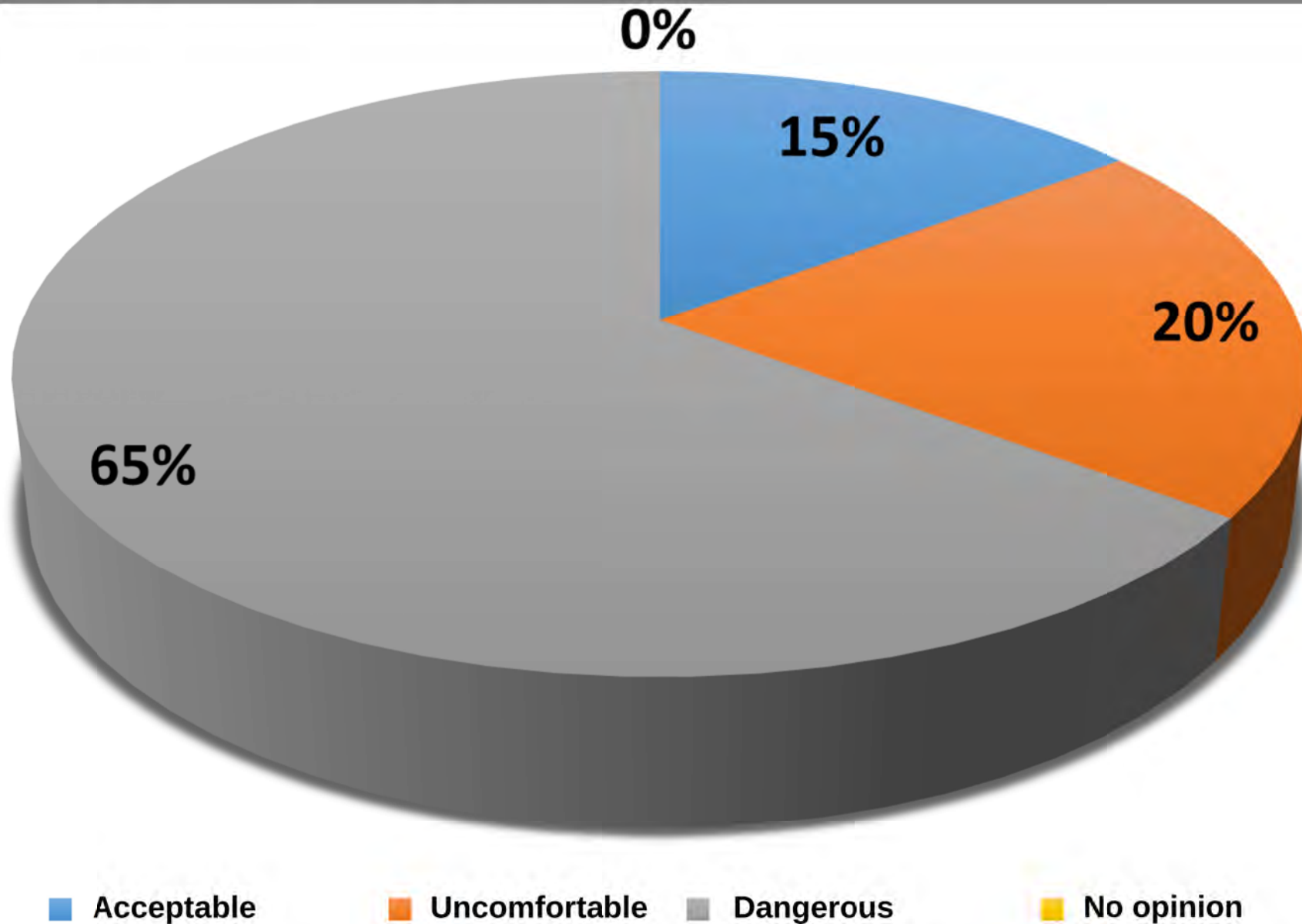
Acceptable

Uncomfortable

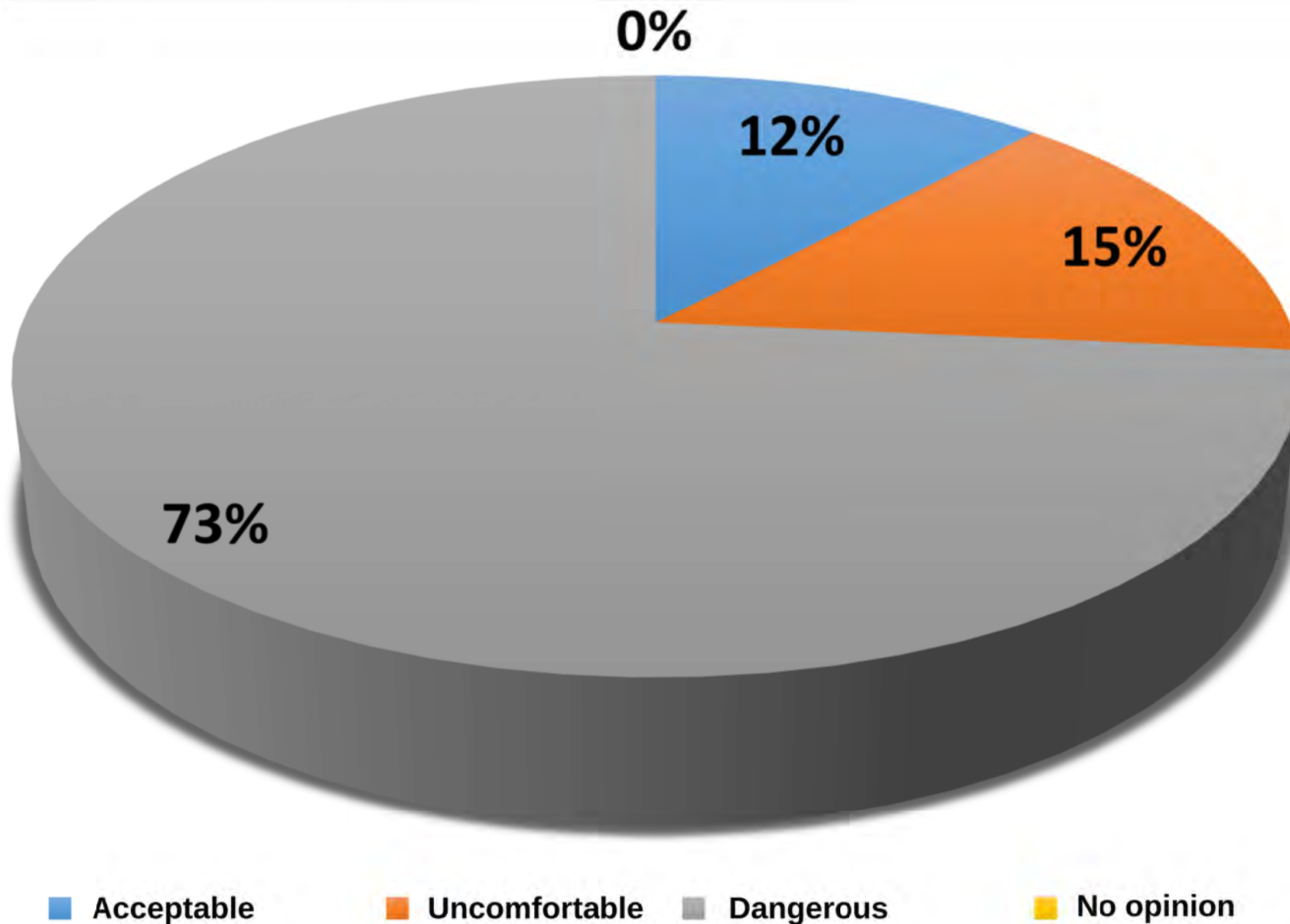
Dangerous



# How do you feel the presence of cyclists along the platform ?



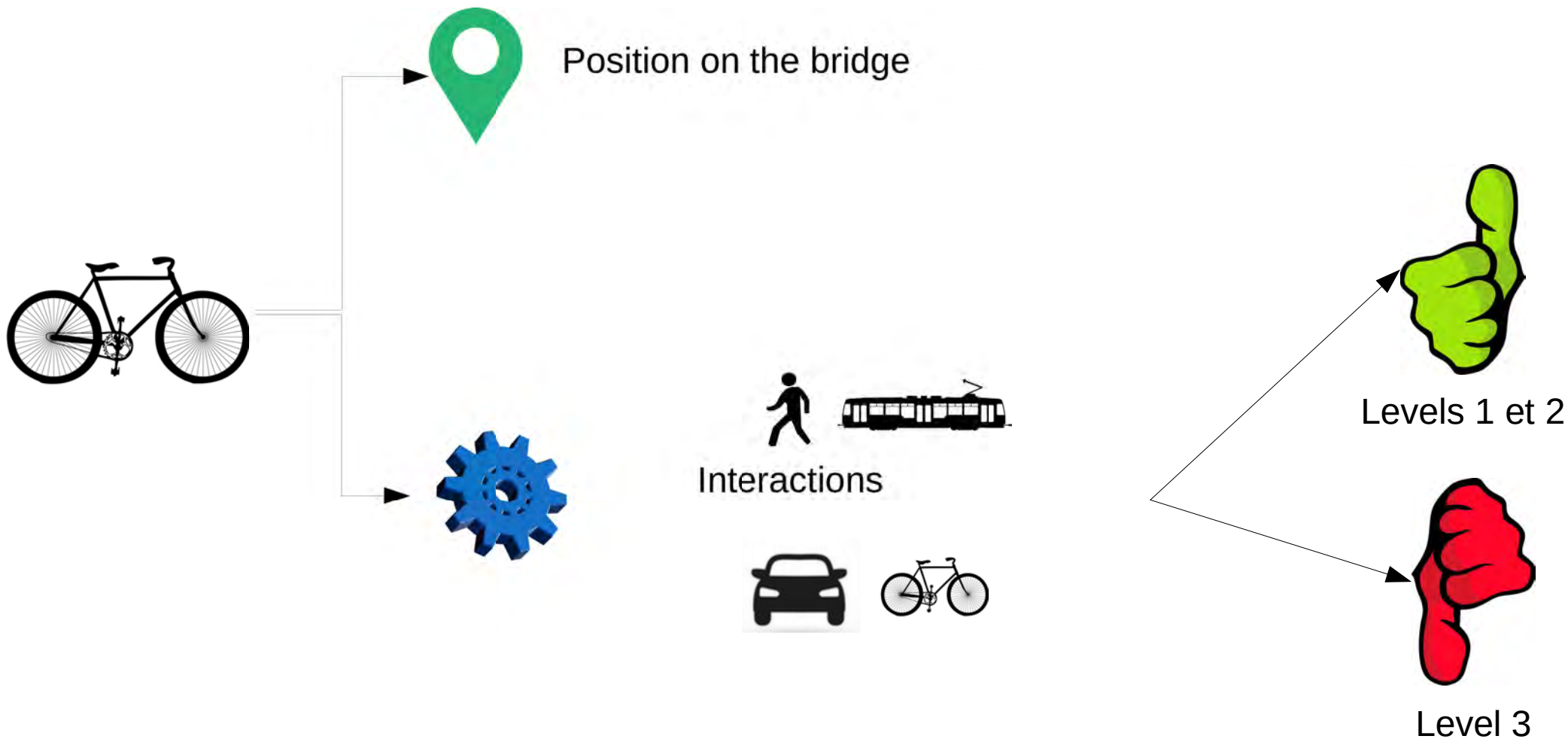
# How do you feel the presence of cyclists on the platform ?





# Observation of interactions

588 cyclists riding on the bridge (2x3 hours observed) :



# Levels of interactions :



Level 1

No interaction



Level 2

Anticipated and fluid trajectories. No impact security or comfort



Level 3

Interaction with an impact security or comfort

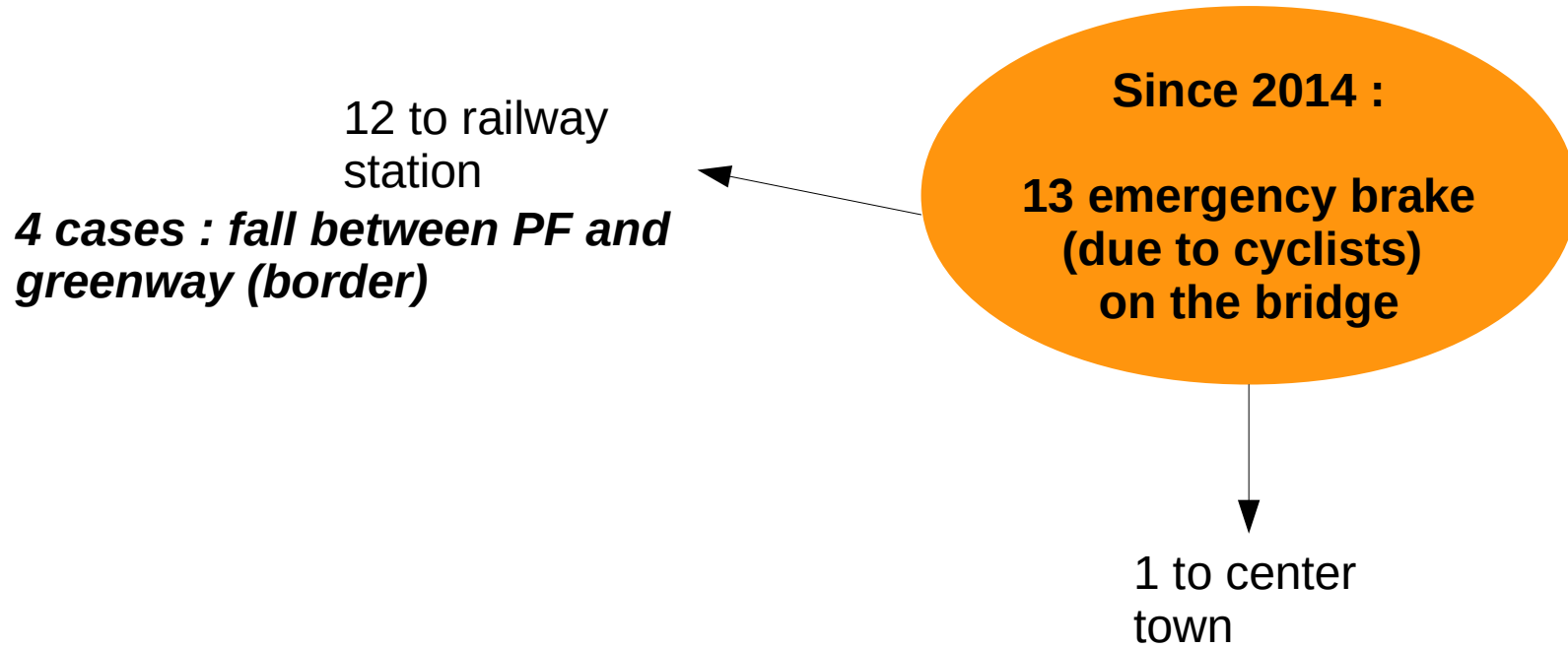


# Result of interactions



						 (velo seul – pas d'interaction)
Level 1		53	130	21	56	193 • 182 on PF • 6 sur road • 3 on footpath • 2 on greenway
Level 2		27	15	7	14	
Level 3		37	8	16	6	
Total		117	153	44	76	

Tram operating





# Thanks !

Christian SAUTEL  
Christian.sautel@cerema.fr