



ADAPTATION OF TRANSPORT INFRASTRUCTURES AND NETWORKS TO CLIMATE CHANGE

Marie Colin ¹, Fabien Palhol ¹, André Leuxe ²

¹ Cerema, ² French Ministry for Environment, Energy and the Sea

FRENCH CLIMATE CHANGE ADAPTATION PLAN - CONTEXT



**National
Adaptation
Strategy**

**Report –
Impacts
and costs
of climate
change**

**PNACC
preparation:
National
and local
consultation**

**French
National
Adaptation
Plan - PNACC**

COP 21

**The new
PNACC**

PNACC research and studies

Reports on Climate Projections in France

PNACC – TRANSPORT INFRASTRUCTURES AND SYSTEMS



Action 1 – Review and adapt technical standards for construction, maintenance and operation of transport networks – infrastructures and equipment – in continental France and French overseas territories

Action 2 – Study the impact of climate change on transport demand and the consequences for reshaping transport provision

Action 3 – Define a harmonized methodology to identify the vulnerability of infrastructures and land, sea and airport systems

Action 4 – Establish a statement of vulnerability for land, sea and air transport networks in continental France and in French overseas territories and prepare appropriate and phased response strategies to local and global climate change issues



THE WORKING GROUP



Sponsor

French Ministry for Environment,
Energy and the Sea

Project manager

Cerema

The Technical Working Group

Cerema, SNCF, STAC, STRMTG, VNF

Infrastructures taken into account

Airport infrastructures

Cable transport infrastructures

Earthworks

Highway infrastructures

Highway constructions

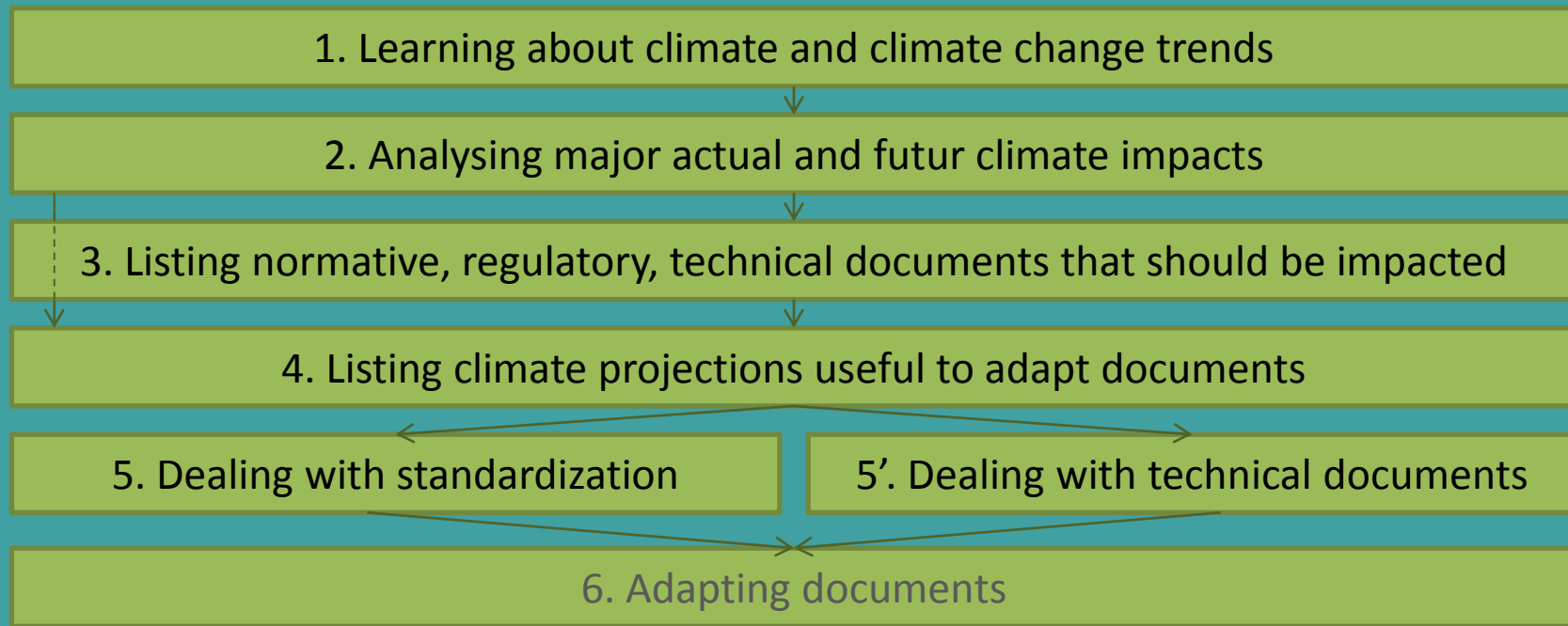
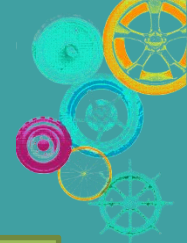
Maritime, port and river infrastructures

Rail and guided transport infrastructures

Urban roads



A1 – ADAPTATION OF DOCUMENTS



A1 – ADAPTATION OF DOCUMENTS

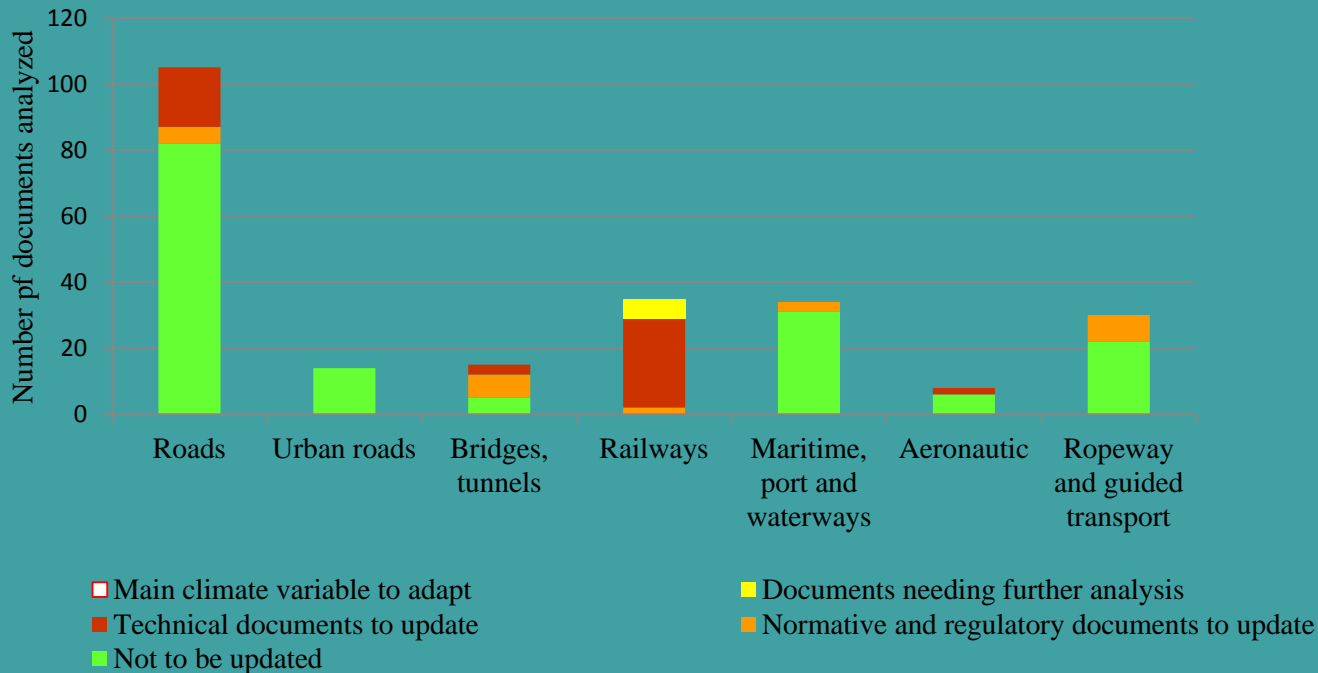


Climate zone, drainage, freeze, freeze-thaw cycle, groundwater, lightening, rainfall, snow, temperature, wind, etc.

Impacts are due to climate variables changes or correlated consequences

Impacts are expected on design, maintenance and operation

Adaptation needs precisions on existing climate variables or new indicators



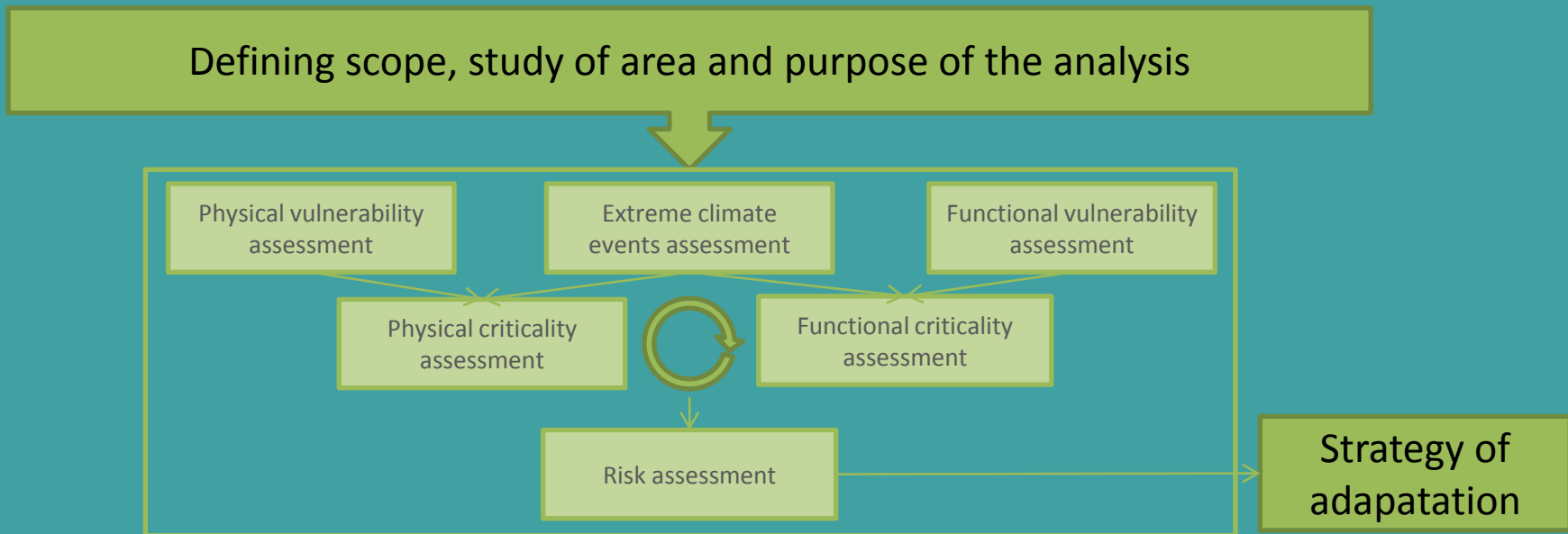
A2 – CLIMATE CHANGE AND MOBILITY



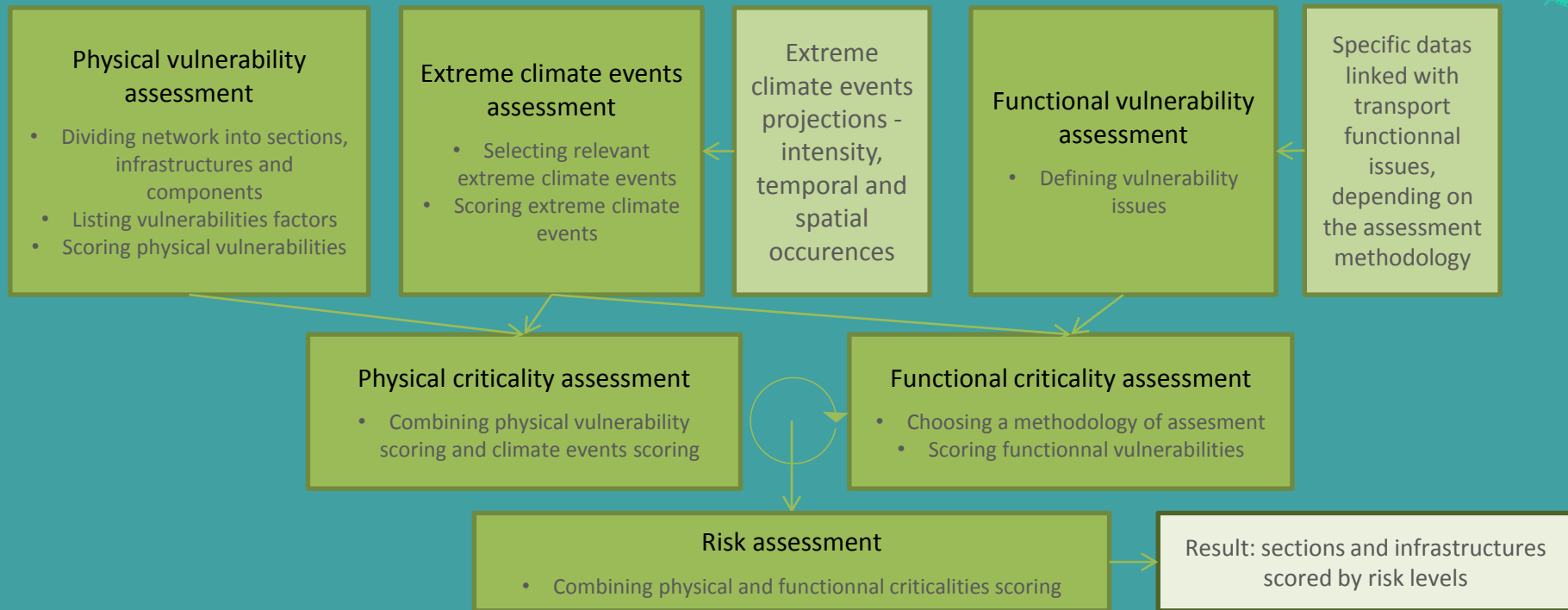
- Aim of the study: listing and analysing major issues to adapt mobility
- Methods : analysis of an international bibliography, including french local adaptation strategies; analysis of such issues in towns with similar climates
- Results:
 - Examples of climate change impacts on mobility
 - Analysis of how some french local adaptation strategies take into account mobility adaptation
 - Methodological elements to adapt mobility
 - Listing and analysis of adaptation measures



A3 – RISK ANALYSIS



A3 – RISK ANALYSIS



CONCLUSIONS



Toward a new PNACC 2016-2020 with a continuity of actions

Action 1:

- **Over 1000 documents analyzed, 241 listed, 30 % with a need of further studies or with a need of adaptation**
- **Today : involvement in standardization, small technical working groups**

Action 2: issues on mobility adaptation need to be shared with planners

Action 3:

- **An applicable methodology... still under development , tested with pilot studies applied on various study areas and transport types**
- **Next steps: automation of the methodology, adaptation solution strategies**





Thank you for your attention

Contacts:

Marie COLIN: marie.colin@cerema.fr

Fabien PALHOL: fabien.palhol@cerema.fr

André LEUXE: andre.leuxe@developpement-durable.gouv.fr

Reports are available on:

<http://www.infra-transport-materiaux.cerema.fr/national-climate-change-adaptation-plan-a5978.html>



MINISTRY
OF INFRASTRUCTURE
AND CONSTRUCTION



Instytut Badawczy
Dróg i Mostów
Road and Bridge
Research Institute



Conférence Européenne
des Directeurs des Routes
Conference of European
Directors of Roads



European Road Transport
Research Advisory Council



ERRAC
The European Rail
Research Advisory
Council



alice

Alliance for
Logistics Innovation
through Collaboration
in Europe



The National Centre
for Research and Development



ECTP
INNOVATIVE BUILT
ENVIRONMENT