

Explanatory mission on sustainable reconstruction after floods in Serbia

Outputs and proposals

1 - 4 December 2014

2007.

19.05.2014.



Grad Obrenovac - DOF

Grad Obrenovac - SPOT6

- Context of the mission
- Objectives of the mission
- A mission conducted by French public institutions
- Main outcomes
- Channels of cooperation



Context of the mission

- Floods mid-may 2014
- Willingness of France to contribute to Serbian reconstruction :
French financed mission (Ministry of Foreign Affairs and
Ministry of Ecology and Sustainable development)
- Taking adequate action with respect to prevention of natural
disasters and sustainable urban development

Objectives of the mission

- Analyse existing practices related to urban planning and risk prevention
- Inform Serbian stakeholders about EU and French regulations and practices
- Define the needs for each authority scale
- Identify medium /long term French support to Serbia

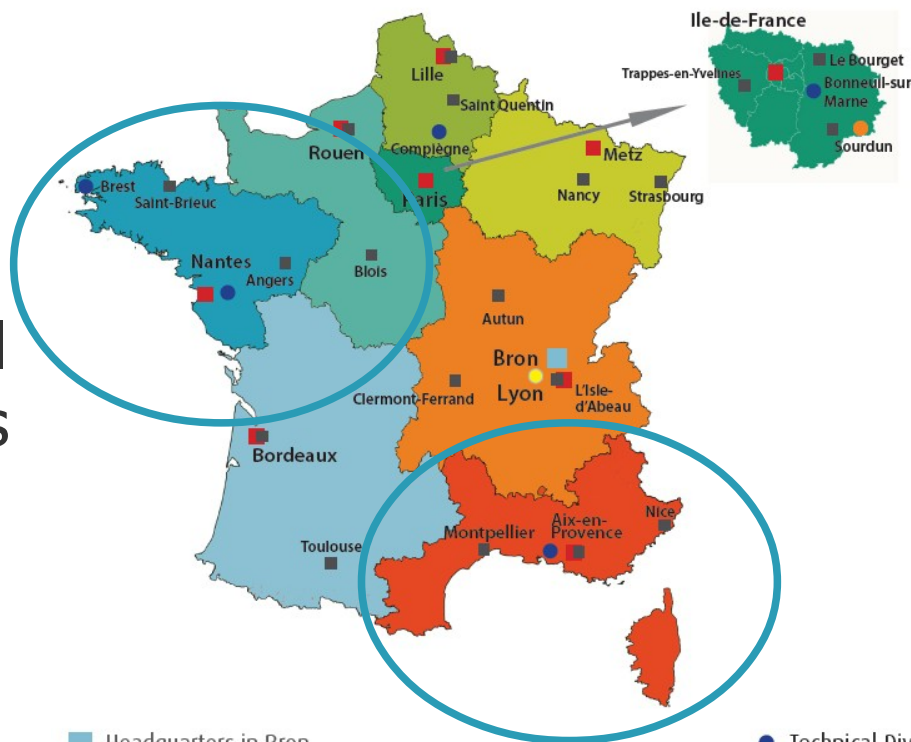
A combined mission of French public institutions

Cerema as national technical center competent on risks management, urban planning, mobility, environment

Adetef as international technical assistance operator competent on leading multiscale and multiactors projects

The Cerema in figures

- 3100 employees
- 220 international and local experts
- €250 M budget
- 180 annual publications
- 66 national expertise hubs
- 33 associated research teams



■ Headquarters in Bron

- Division for Public Policies, Programs and Production
- Division for Science and Technology, and European and International Affairs
- Division for Communication and Knowledge diffusion
- Division for Human Resources
- Division for Administrative and Financial Affairs
- Division for Information Systems
- Principal accounting agency
- Quality Assignment

● Technical Division for Transportation Infrastructures and Materials

● Technical Division for Water, Sea and Waterways

● Technical Division for Territorial Development and Urban Planning

■ Territorial Divisions

- for the Central-Eastern Regions
- for the Eastern Regions
- for Paris Region
- for the Mediterranean Regions
- for the Normandy and Central Regions
- for the Northern and Picardie Regions
- for the Western Regions
- for the South-Western Regions

■ Other locations of Technical Divisions (laboratories, etc.)

Activity with French Overseas Territories

■ Territorial Division for the Mediterranean Regions

- Mayotte
- La Réunion
- Nouvelle Calédonie
- Wallis et Futuna
- Polynésie Française

■ Territorial Division for the Normandy and Central Regions

- Saint Pierre et Miquelon
- Guadeloupe
- Martinique
- Guyane

Some themes of excellence



Risks

Expertise for the prevention of natural and technological risks



Energies and climate

An involvement for sustainable energy and control energy consumption

Infrastructures and mobility

Safe and sustainable infrastructure for more efficient and environmental mobility



Transport infrastructures

Installation for railway tests



Sea and coastal areas

Maritime Spatial Planning and Integrated Coastal Management.



Metropolisation

An integrated approach for sustainable city involving a large panel of skills



**Ministry
of the Economy and Finance**

**Ministry
of Industry**

**Ministry of Sustainable
Development and Energy**

Ministry of State Reform

adetef.
Assistance Technique France

**International technical
assistance agency**

117 persons' staff

About thousand civil service experts

**December
2014**

adetef.
Assistance Technique France

 **Cerema**

Adetef offers expertise on national sustainable development strategies :

- Public **policies on energy** and raw materials
- Policies related to **Climate Change** mitigation and adaptation
- **Environmental policies** and governance
- National **transports strategies**
- **Urban planning**

Our strengths :

- Acces to **high-level expertise**
- **Varied expertise** (pubic and private experts, partners and ministries)



International Partnerships :

- Eastern Europe
- Mediterranean region
- Sub-Saharan Africa
- Asia and South America

Mission program

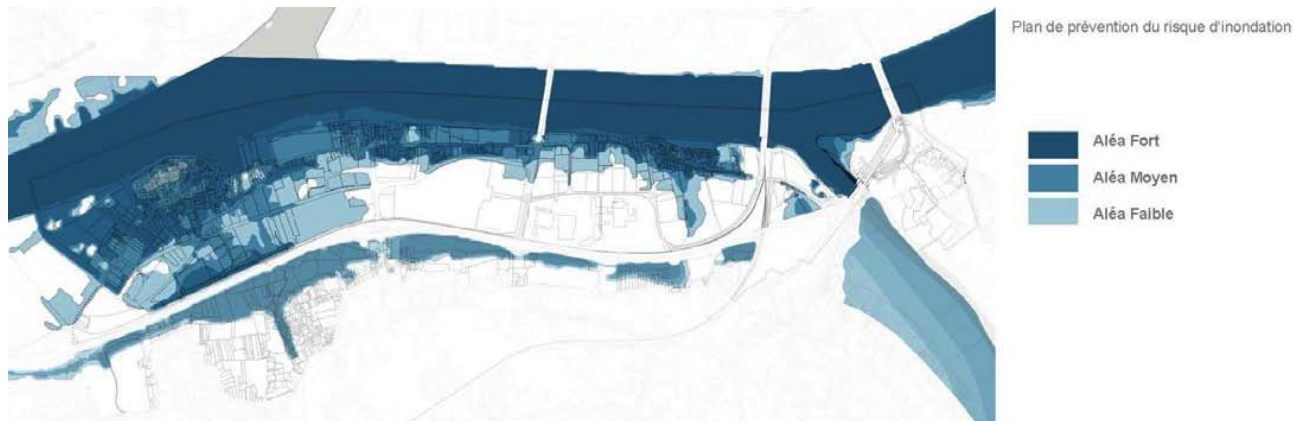
- Day 1**
- Ministry of Transport, Infrastructure and civil engineering
 - City of Belgrade and its technical agencies (Belgrad Vode, Investment and Housing Agency, Environmental Service)
- Day 2**
- Municipality of Obrenovac
 - On-site visit
- Day 3**
- Republican Agency for Spatial Planning
 - Ministry of Agriculture and Environmental Protection
 - Ministry of Interior
 - Urban Planning Institute of the City of Belgrade (URBEL)

Visit of Obrenovac



Main outcomes

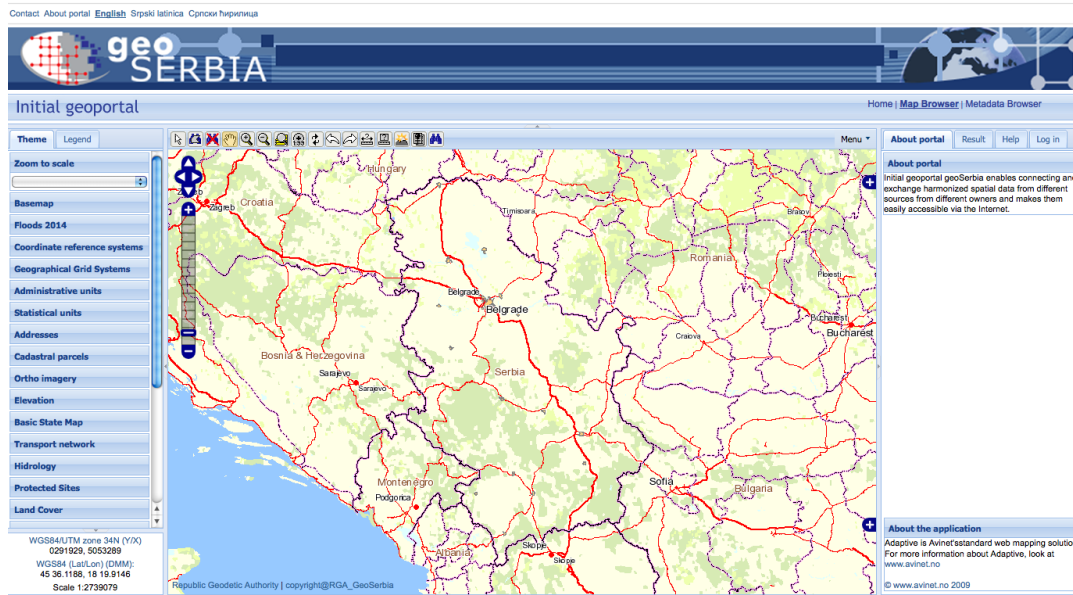
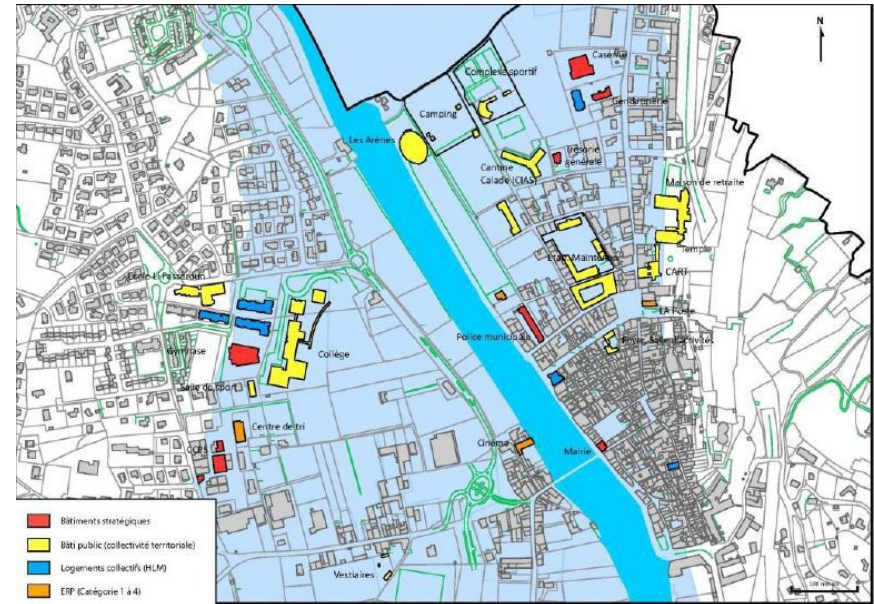
Feedback on last past floods: at least flood marks, flood extends, maps of water depth



Flood hazards and risks maps, at the river basin scale (2d order) and at local and urban spatial plan scale

Main outcomes

Identification of strategic public buildings in case of crisis



Data structuring and sharing

Main outcomes

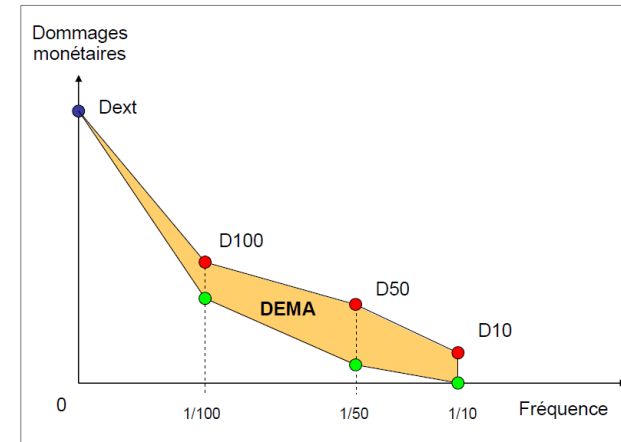
**Awareness raising
on risks for
citizens**



**Strengthen of the
environmental and
urbanism police :**
enforcement of urban
plans

Main outcomes

Economic efficiency of flood protection



The screenshot shows the 'Monitor progress' interface of the TSC (Reference Framework for European Sustainable Cities). The interface includes a search engine for indicators and a table of selected indicators. The search engine allows users to search for indicators by selecting a pillar, objective, and indicator. The table of selected indicators shows the following indicators:

Indicator	Value	Added	Checked	Deleted
ENVIRONMENT				
Mitigate and adapt to the effects of climate change				
EN < 15 - Greenhouse gas emissions - P: tons per capita	700	added	✓	✕
EN < 16 - Share of renewables in energy consumption	700	added	✓	✕

Monitoring and evaluation : creation of indicators

Channels of cooperation (1)

Capacity building to implement Flood Directive

- 3 steps
 - 1. Preliminary flood risk assessment
 - 2. Flood hazard and flood risk maps in APSFR
 - 3. Flood risk management plan
- Focus
 - Work on the whole network (1st and 2nd orders of rivers)
 - Create indicators
 - Build national guidelines for each step
 - Integrate FRMP measures in urban planning
 - Role and efficiency of protection

Channels of cooperation (2)

Enforcement of sustainable cities

- Coordination with the common approach of European cities
- Focus
 - Implementation of decision-making and monitoring tools as the Reference framework for European sustainable cities (RFSC) to reinforce planning documents
 - Joining networks of cities (Aalborg Charter)
 - Establish long-term action plans (Local Agendas 21)

Channels of cooperation (3)

A PAPI for Obrenovac (local flood prevention action plan)

- 7 work axes:
 - Knowledge and consciousness
 - Observation, forecast and information
 - Alert and crisis management
 - Spatial planning
 - Reduction of spatial vulnerability
 - Slowing down the flows
 - Defenses management
- Focus :
 - Economic analysis
 - Live with the risk : preparation, organization, resilience

Channels of cooperation (4)

Focused short term missions

- Experience sharing and Study visits in France/ Serbia
- Some ideas:
 - Costs-benefits analysis
 - Data structuring and data sharing
 - Development of sustainable and risks indicators
 - Flood prone areas for upstream basin
 - Topographic data (LIDAR)
 - Post-disasters feedback methodologies
 - Trainings in creating national handbooks
 - Risks integration in urban planning
 - ... And your needs !

Thank you for your attention!

хвала

Anne CHANAL

Head of section vulnerability, risk prevention and crisis planning

Anne.chanal@cerema.fr

Denis CROZIER

Architect and engineer specialised in risk management and urban planning

Denis.crozier@cerema.fr

Frédéric PONS

Hydraulic expert on floods and coastal hazard

Frederic.pons@cerema.fr

Murielle GURTNER

Project Manager – Environment and urban development

Murielle.gurtner@adetef.finances.gouv.fr