



RÉPUBLIQUE
FRANÇAISE

*Liberté
Égalité
Fraternité*

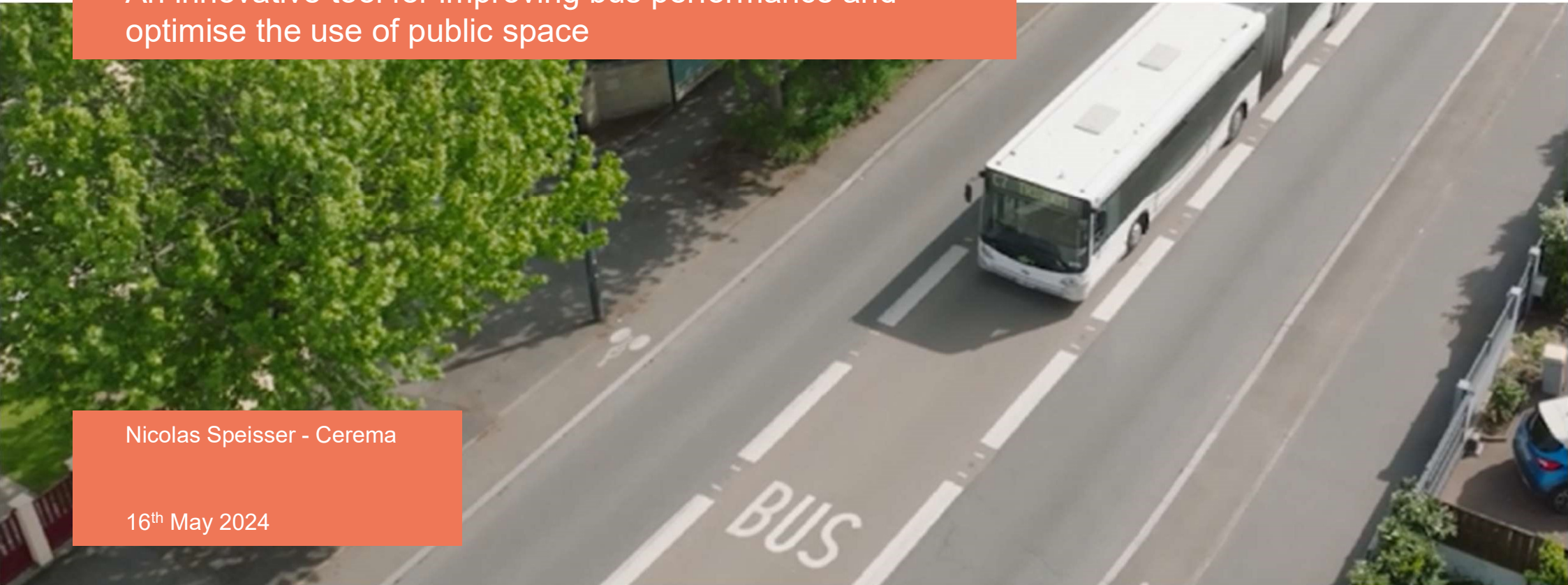


BIDIRECTIONAL SINGLE BUS LANES

An innovative tool for improving bus performance and optimise the use of public space

Nicolas Speisser - Cerema

16th May 2024



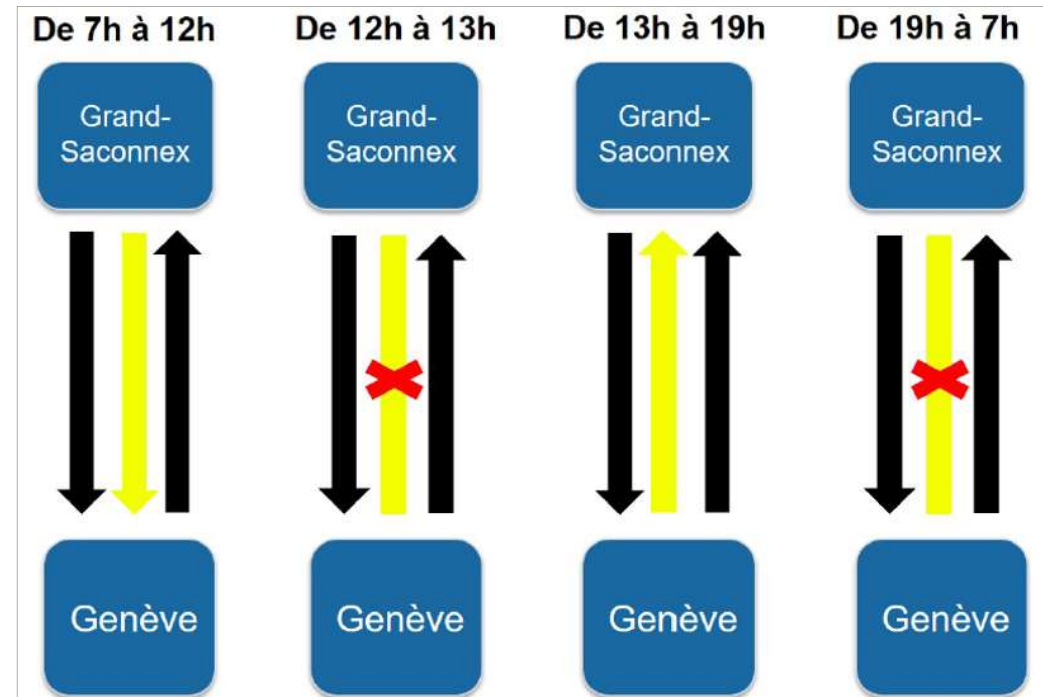
Management by visual control



Management by traffic lights



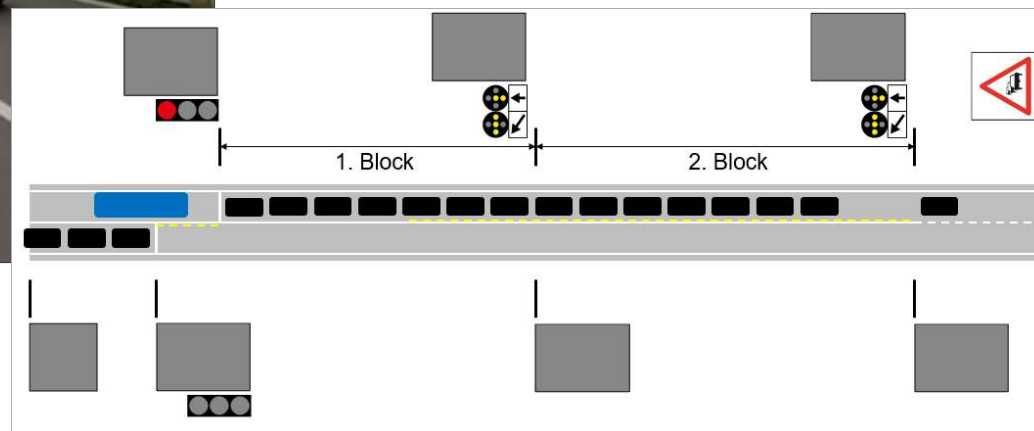
Direction changing according to the time of the day



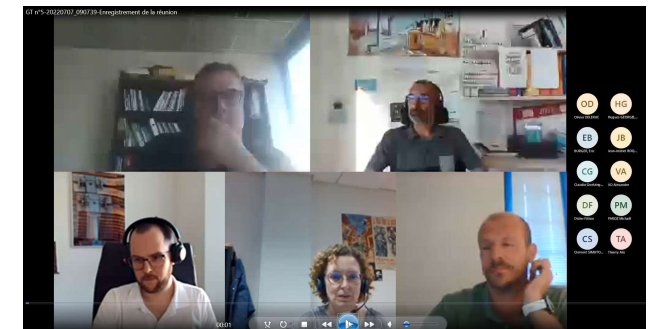
Direction alternated in space



Dynamic single bus lane “Contra-Flow”



International working group



Next steps

- New international examples
- More working groups and visits
- Technical feedback
 - Management of pedestrians, cyclists, entrances and exits, junctions, stations, etc.
- Publication of a technical manual (French and English)
 - July 2024





Merci de votre attention