

IMPROVING THE ACCESSIBILITY OF PEDESTRIAN CROSSINGS FOR PEOPLE WITH VISUAL IMPAIRMENTS



EXPERIMENTS WITH “TACTILE MATS”

Pauline Gauthier, Cerema

COMPLEX PEDESTRIAN CROSSINGS

- long distance crossings
- oblique crossings
- curved sidewalks
- noises blurring sound cues



Difficulties for visually impaired people

OBJECTIVES

Promote walking and active modes

Ensure safety and autonomy for vulnerable users



Meet a legislative requirement

Test devices, anticipate, innovate



METHOD



Partnership



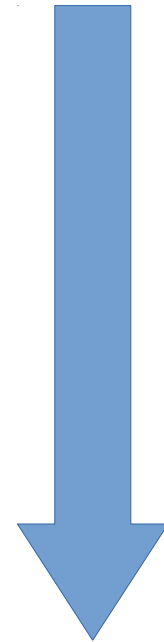
Preparation and product selection

Phase 1 : tests on a road closed to traffic

Phase 2 : tests in real conditions

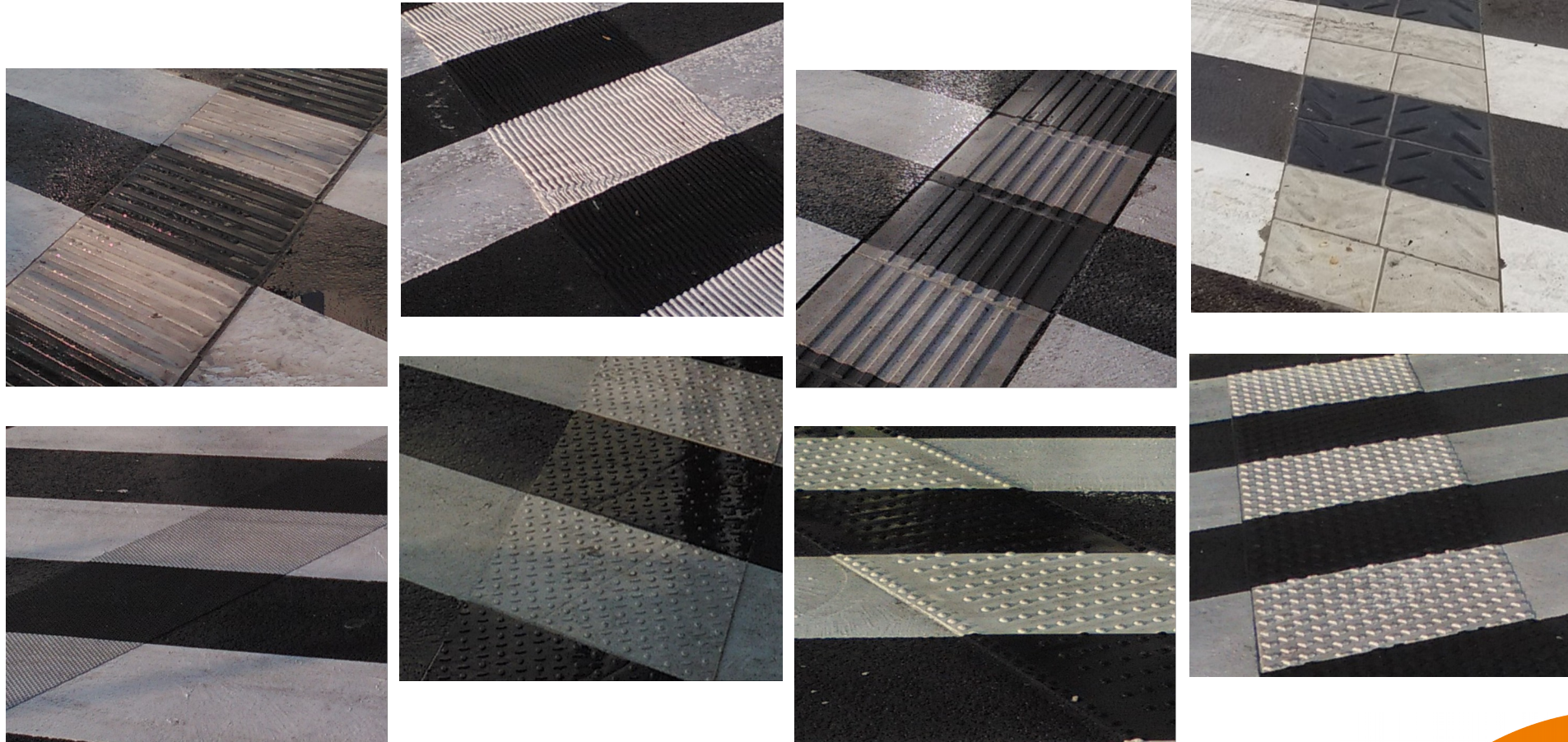
Results

Perspectives



PREPARATION AND PRODUCT SELECTION

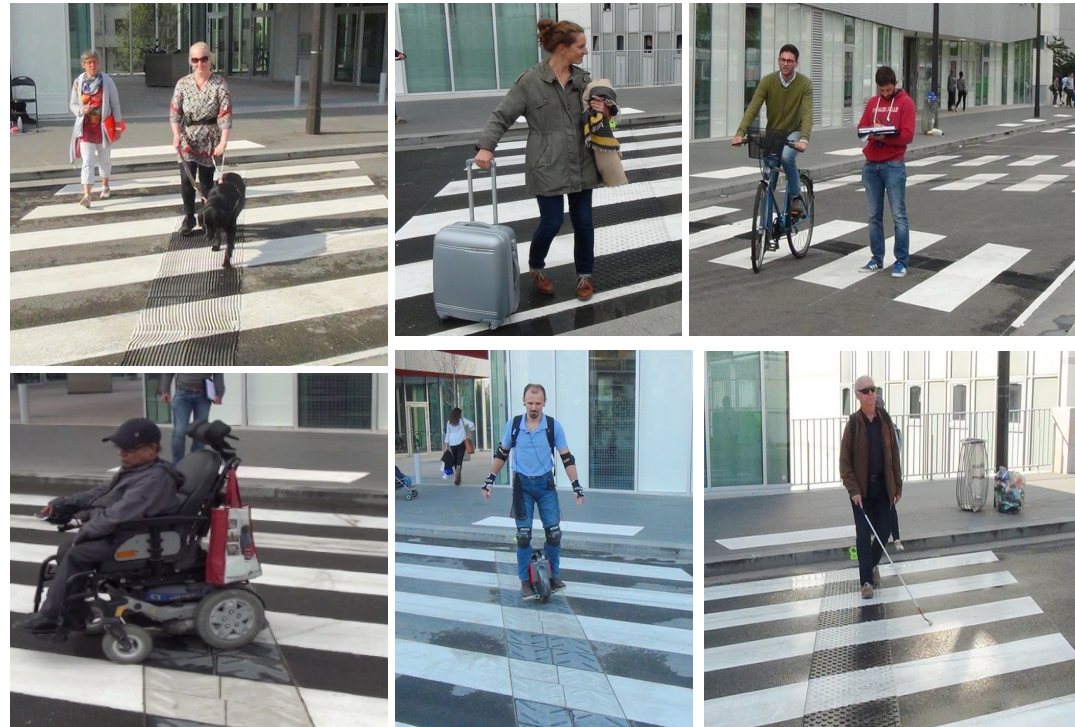
8 different tactile devices selected for phase 1 (non-traffic areas)



PHASE 1 : TESTS ON A ROAD CLOSED TO TRAFFIC



« Louise Bourgeois » road, Paris
closed to traffic



Panel of 47 varied testers

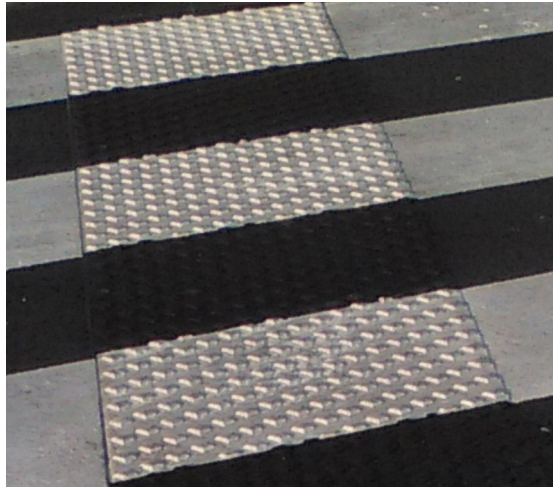
4 days of observation and assessment

PHASE 2 : TESTS IN REAL CONDITIONS

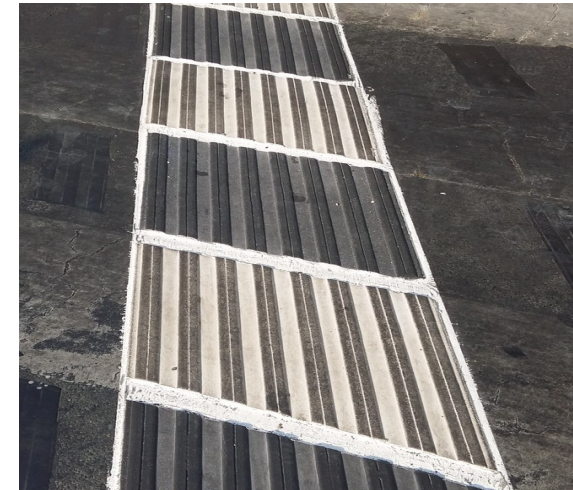
3 selected devices



**« Rice grain like »
patterns**

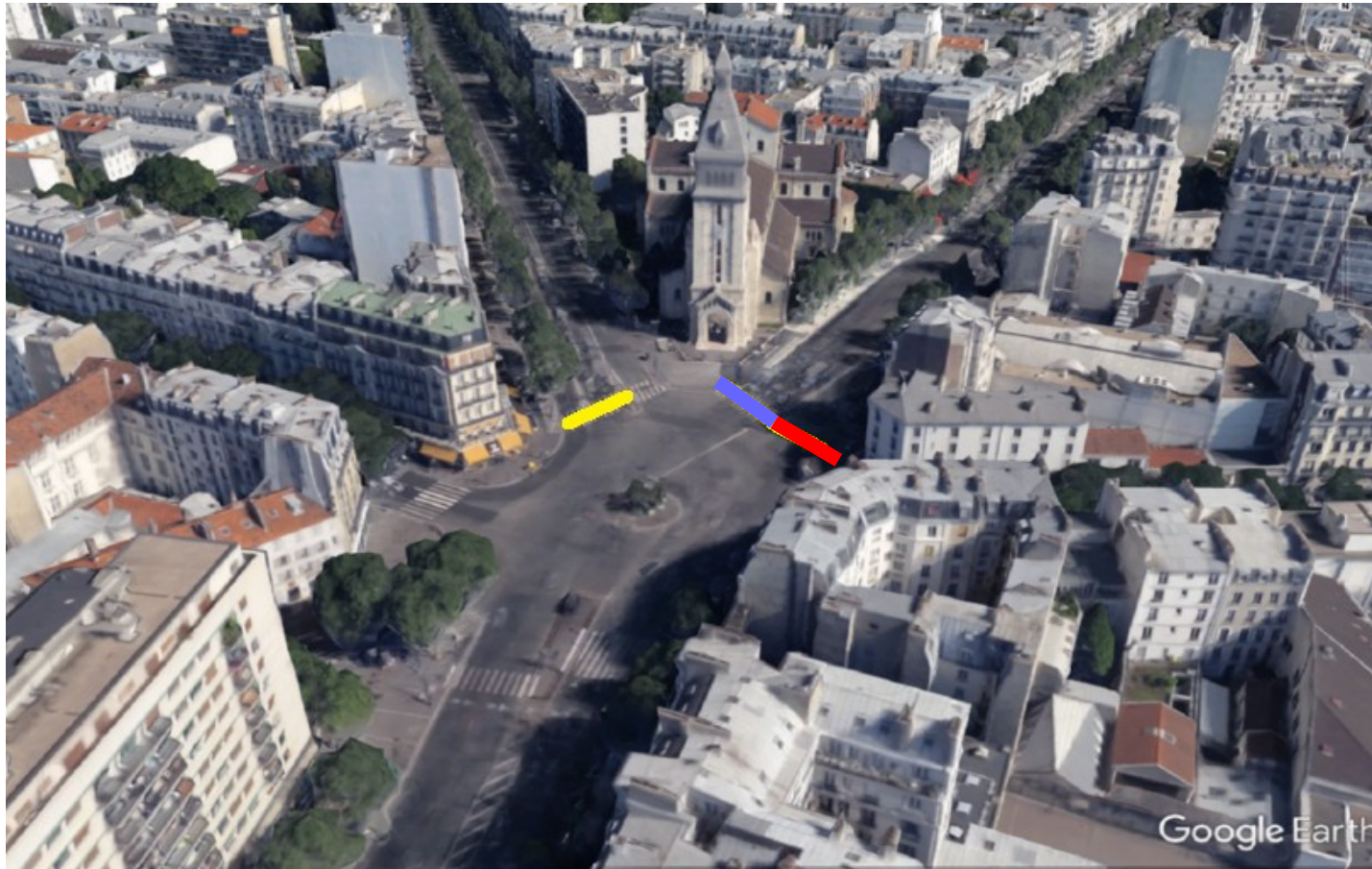




Square patterns



**Grooves in the
direction of
pedestrian traffic**

PHASE 2 : TESTS IN REAL CONDITIONS



-  Grooves
-  « Rice grain like »
-  Square

« Victor et Hélène Basch » square, Paris

PHASE 2 : TESTS IN REAL CONDITIONS

Tests on people with disabilities



Long-term observation of the evolution of devices

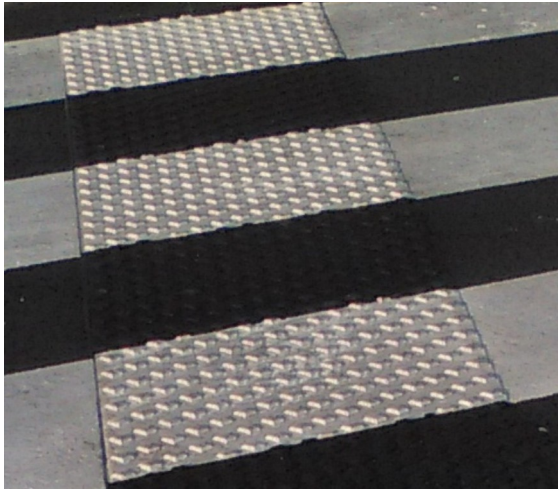
Acoustic measurements



Cyclist Comfort Assessment



RESULTS



Square patterns

easily detectable by the visually impaired

efficient guidance during crossings

comfortable for other users

no additional noise disturbance

PERSPECTIVES



Deployment of the device in other Parisian crossings

Work to standardize the device

THANK YOU FOR LISTENING

For further information :

Pauline Gauthier : pauline.gauthier@cerema.fr

Céline Debes : celine.debes@cerema.fr

Alice Perrin : alice.perrin@paris.fr

www.paris.fr

www.cerema.fr