

# ALPTREES A Transnational Cooperation for Sustainable Use and Management of Non-Native Trees in Urban, Peri-Urban and Forest Ecosystems in the Alpine Region



Patricia.Detry@Cerema.fr  
Sylvain.Bouquet@Cerema.fr

Jean-Paul.Bessiere@Cerema.fr  
Bastien.Exbrayat@Cerema.fr

Leader **Federal Research and Training Centre for Forests, Natural Hazards and Landscape**



## Our objective...

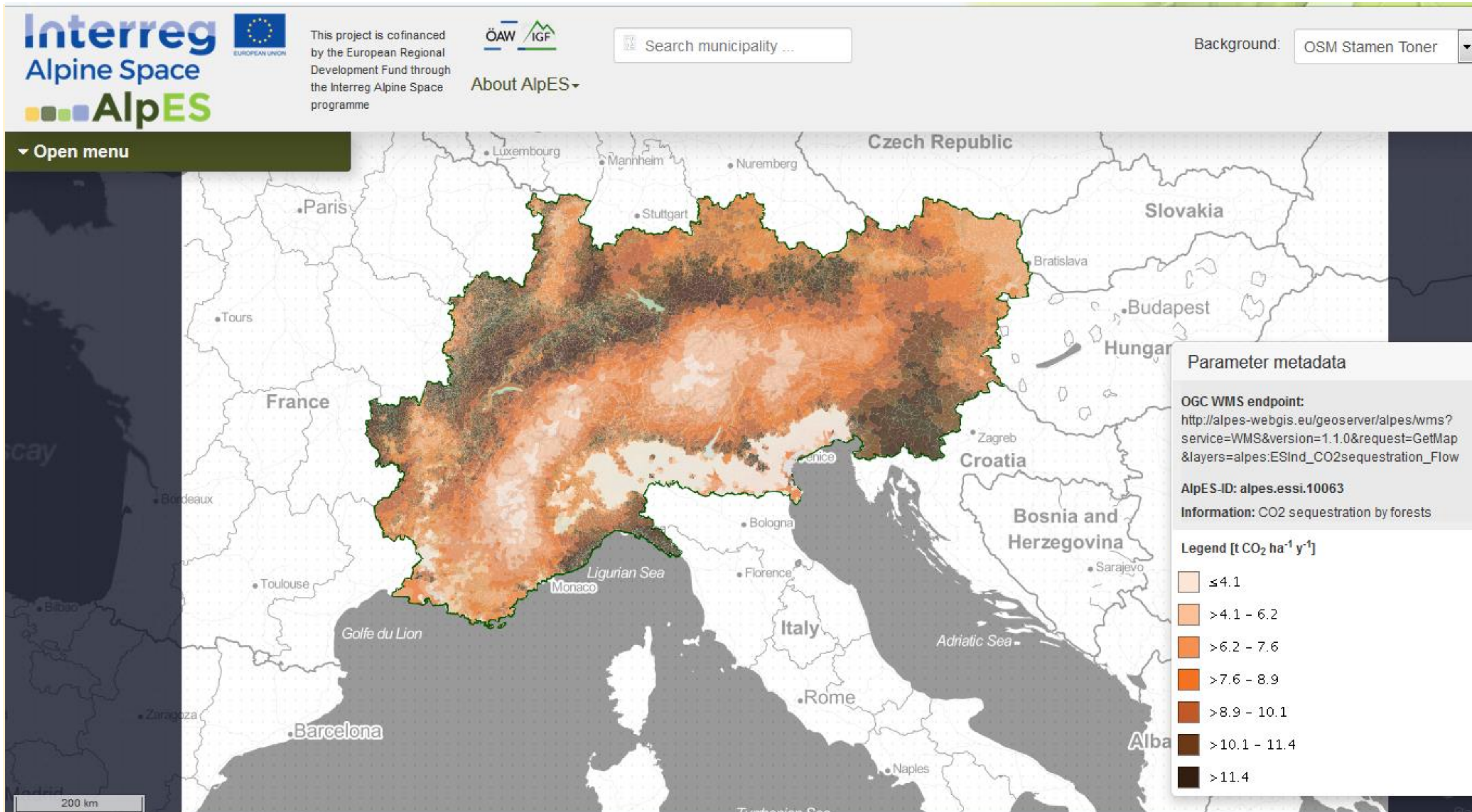
... is to ensure sustainable management of non-native tree species (NNT) in the Alpine region in the context of climate change

## The Alpine space Forest ...

... is an important provider of ES, which are one of the main pillars of a Green Economy in the Alps and a key driver of Alpine development.



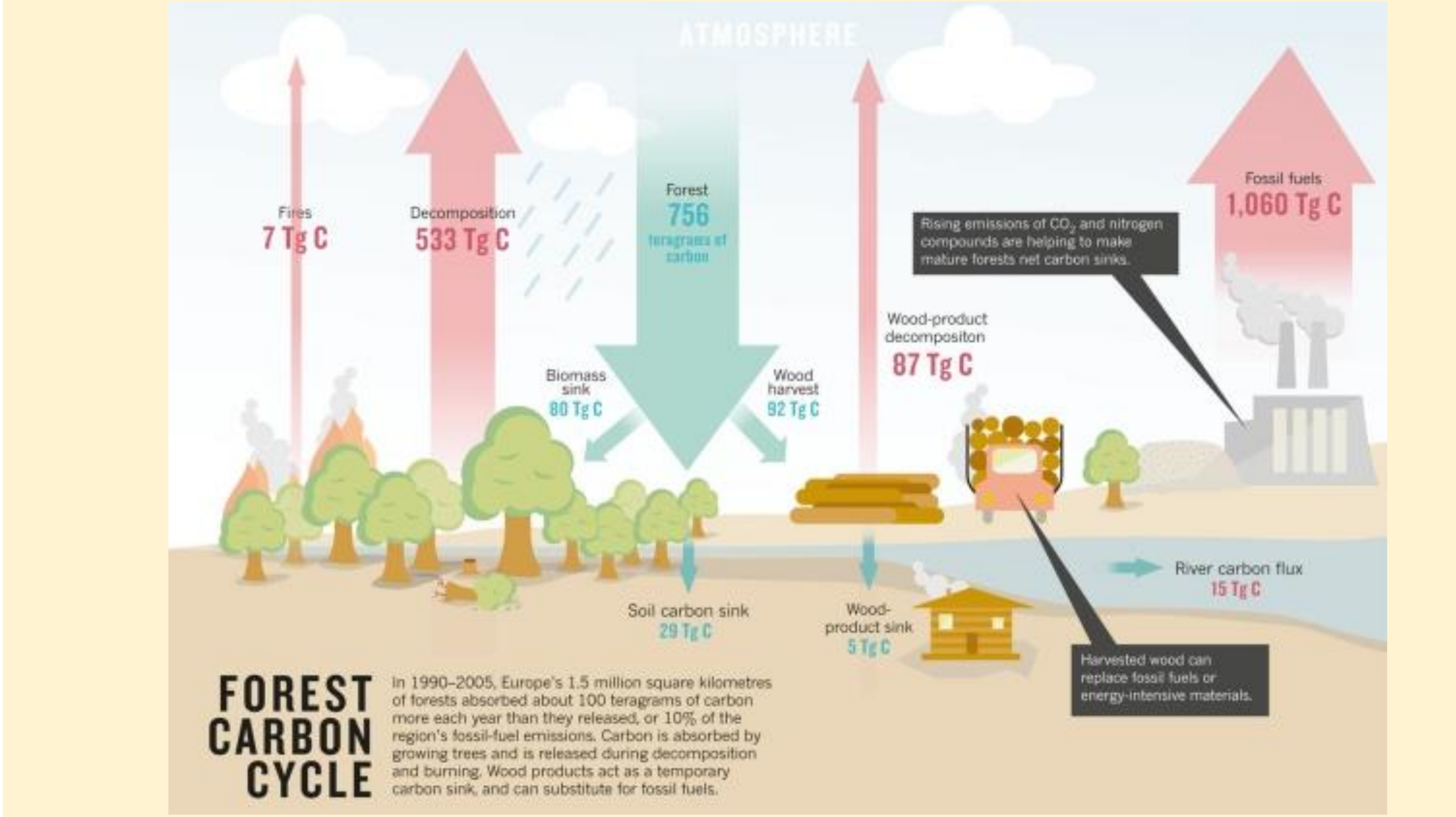
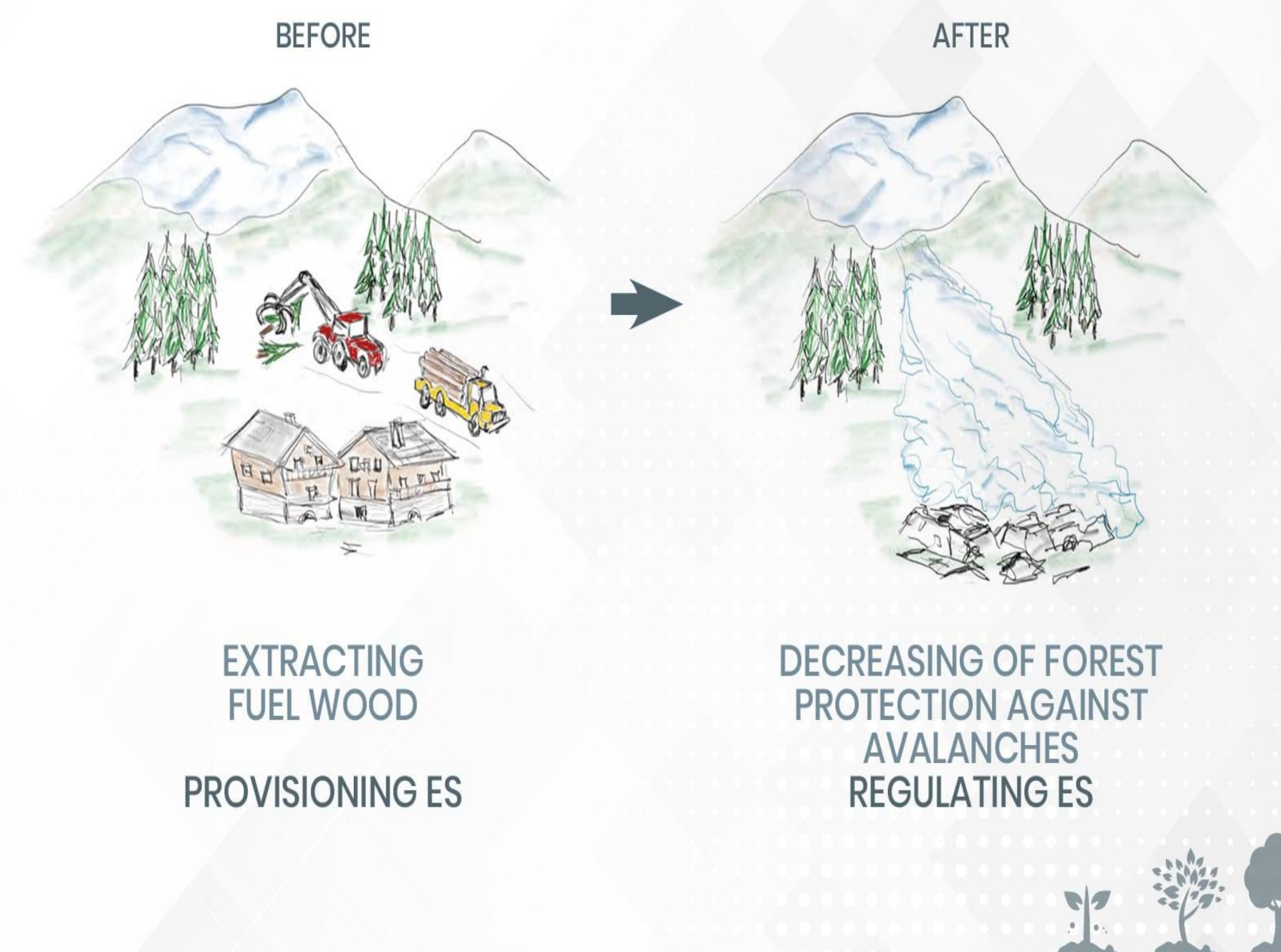
## Ecosystem services concept for ALPTREES



## Ecosystem Services provided by Forests benefit us in myriad ways

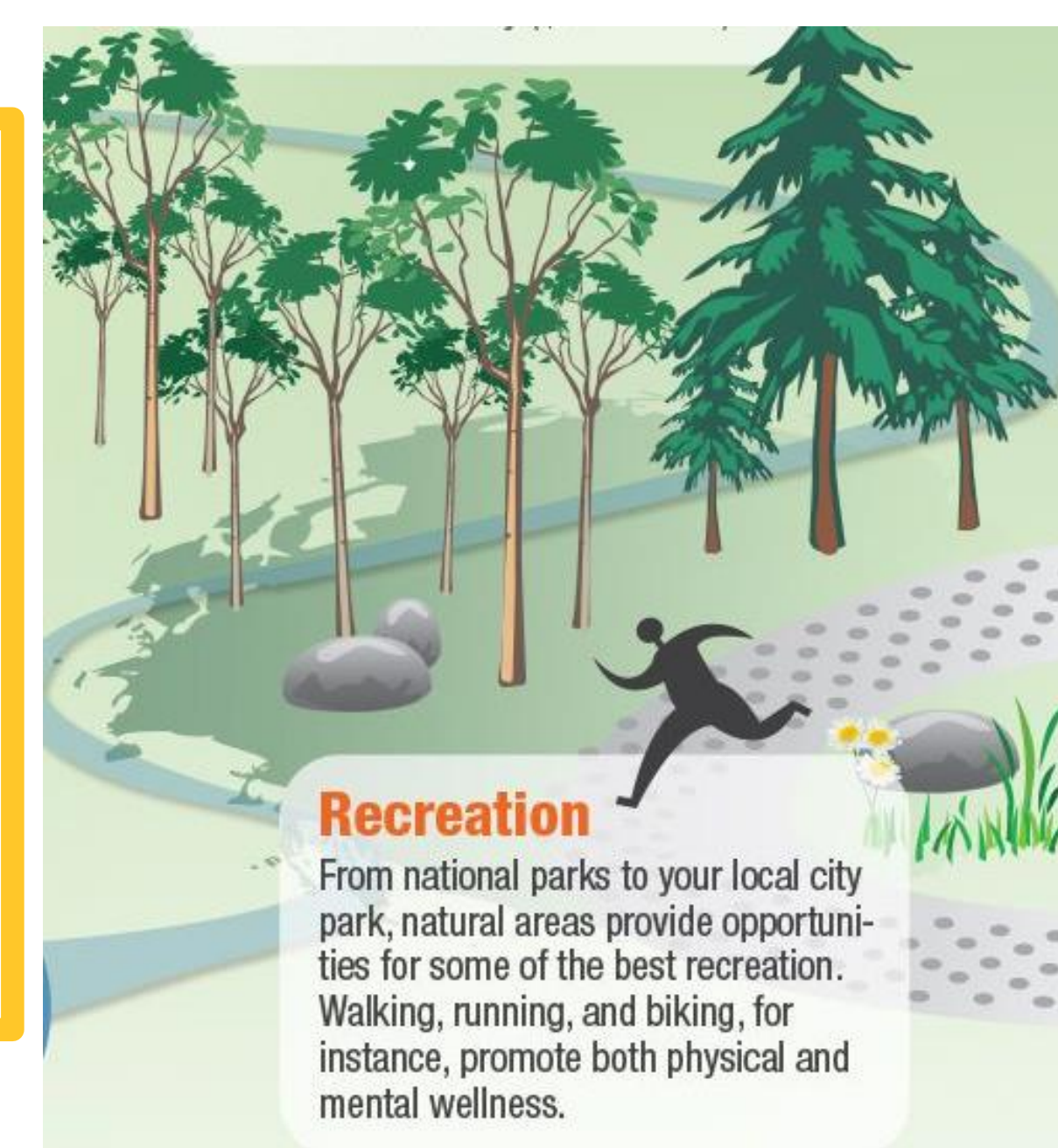
- Provisioning services :** Fuel wood, Timber
- Regulating services:** protection of areas against avalanches, mudslides and rockfalls, Sequestration CO2
- Cultural services:** recreation and creative inspiration

## ESTRADE-OFFS



**ALPTREES is taking into account AlpES project results via**

- Its interactive Web GIS [alpes-webgis.eu/](http://alpes-webgis.eu/)
- The Alpine wiki [www.wikialps.eu](http://www.wikialps.eu)



## Background information

**Project duration** Oct 2019 - June. 2022  
**Funding** 2 348 665 € (ERDF 85% + public contribution)  
**Project website** [www.alpine-space.eu/projects/alptrees](http://www.alpine-space.eu/projects/alptrees)  
**Leader** **Federal Research and Training Centre for Forests, Natural Hazards and Landscape**



**Follow us on Facebook** <https://www.facebook.com/alptrees>



**Partners**  
 Austrian Research Centre for Forests (AU, Lead partner) • Municipal authorities of the provincial capital Klagenfurt on Lake Wörtherseeo E.C.O. Institute of ecology (AT) • International Institute for Applied Systems Analysis (AT) • The Forest Research Institute Baden-Wuerttemberg (FVA) (DE) • Stadt Freiburg im Breisgau, Forstamt (DE) • IRSTEA, institut national de recherche en sciences et technologies pour l'environnement et l'agriculture, établissement public à caractère scientifique (FR) • Cerema, Centre d'études et d'expertise sur les risques, l'environnement, la mobilité et l'aménagement, établissement public à caractère administratif (FR) • Slovenian Forestry institute (SI) • Municipality of Maribor (SI) • Slovenian Forest Service (Unit Maribor) (SI) • Development agency Sora (SI) • LAMORO Development Agency (IT) • Department of Sustainable Agroecosystems and Bioresources, Fondazione Edmund Mach (IT) • Comune di Trento (IT)

**Observers**  
 Environment Agency Austria (AT) • Institute for Wood and Environment - I.P.L.A S.p.A. (IT) • Department of Agriculture, University of Sassari (IT)– WSL Swiss Federal Institute for Forest, Snow and Landscape Research (CH) • District Forest Service Klagenfurt (AT) • Regional Government of Carinthia, Dept. 8 Environment, Energy and Nature Conservation (AT) • Austrian Association of Cities and Towns (AT) • Forest company of Trento and Sopramonte (IT) • University of Trento – DICAM (Department of Civil, Environmental and Mechanical Engineering (IT) • Pro Silva France (FR) • City of Freiburg (DE) - Austrian Service for Torrent and Avalanches Control, Provincial Headquarters Vienna, Lower Austria and Burgenland (AT) • UK Research and Innovation (UKRI) as represented by its component body the Centre for Ecology & Hydrology (CEH) (UK) • IUCN SSC Global Tree Specialist Group (UK) • IUCN, International Union for Conservation of Nature (BE) • Snaga public company, d.o.o. (SI) • Autonomous province of Trento (IT) • Polo Poschiavo (CH) • Piemonte Region (IT) • ARBORIST Tanja Grmovšek s.p. (SI) • Centre for Urban Ecology and Climate Adaptation (DE) • timbering keck: quality and reliability in wood (DE) - Alpine Center for Natural Hazards and Risks Prevention (FR) - County Council of the Nuts3 region Isère (FR) - Austrian Federal Forests (AT) - Association for Landscape Conservation in the Rural District Loerrach (DE) - WWF Austria (AT) - Regional nature conservation association Baden Württemberg (LNV) (DE) - UNECE/FAO Team of Specialists on Forest Communication (CH) – Office national des Forêts (FR)

European Regional Development Fund