



STRMTG

SERVICE TECHNIQUE DES REMONTÉES MÉCANIQUES ET DES TRANSPORTS GUIDÉS

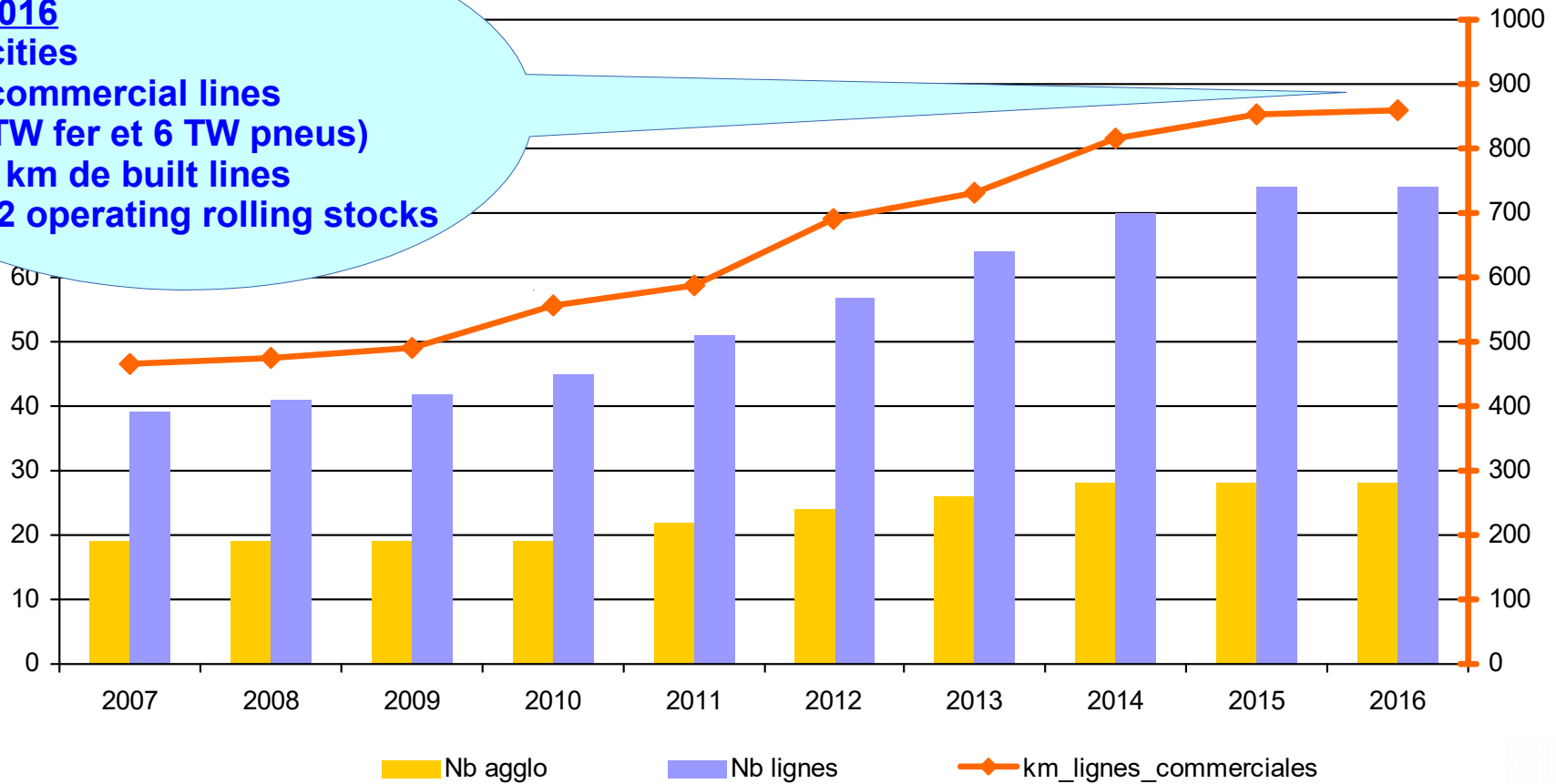
Tramways Accidentology

First results 2016

General data

Nombre d'agglomérations, de lignes et km lignes commerciales

In 2016
28 cities
74 commercial lines
(68TW fer et 6 TW pneus)
729 km de built lines
1342 operating rolling stocks



graphique 01b



EVENTS

Global results

En 2016

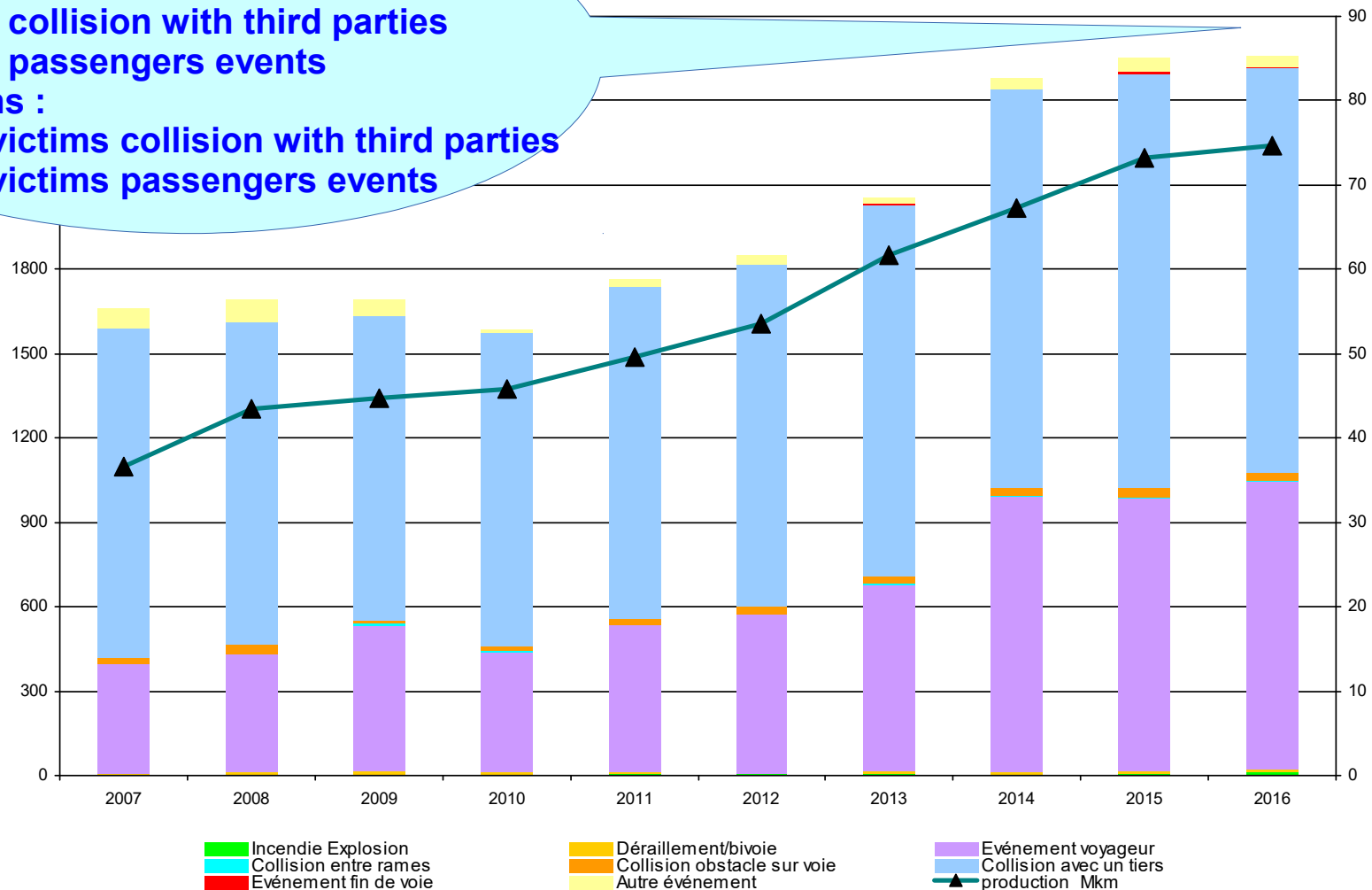
2562 accidents :

- 1439 collision with third parties
- 1025 passengers events

1345 victims :

- 441 victims collision with third parties
- 891 victims passengers events

partition des événements par type

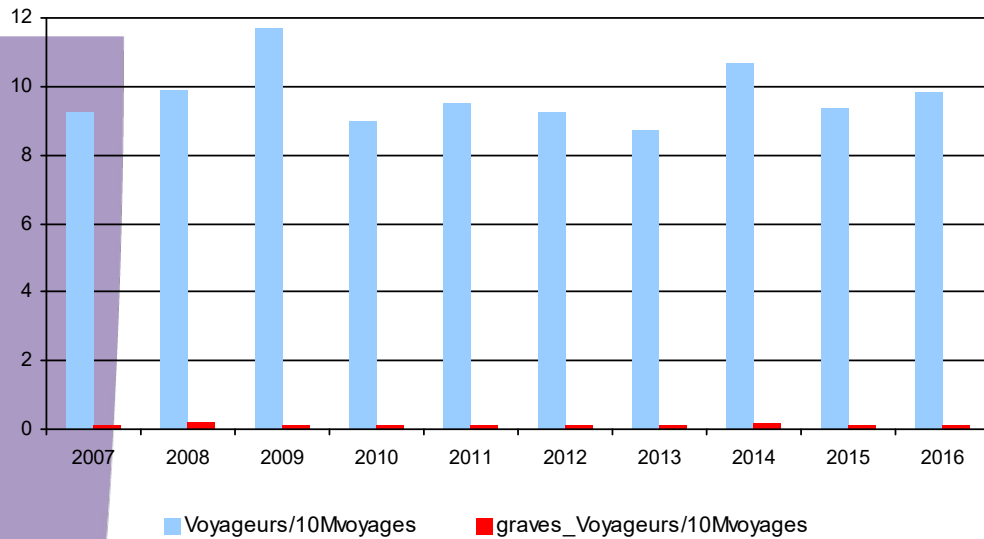


graphique 04

Global results

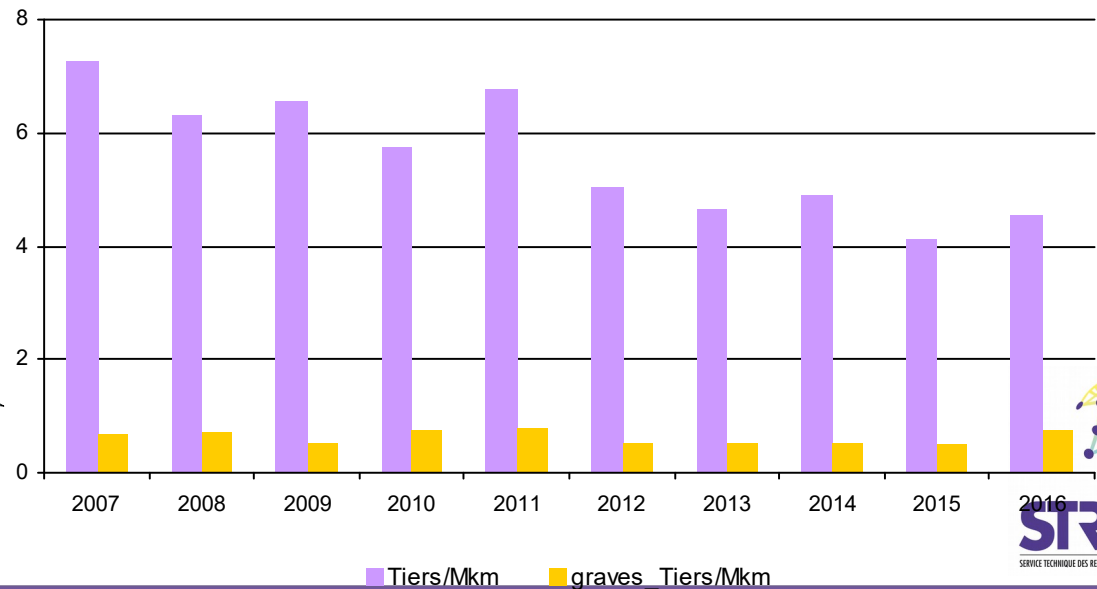
Indicators on victims

Indicateur de suivi des victimes voyageurs

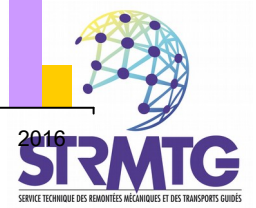


In 2016
891 passengers vict voy for 1345 vict
12 seriously inj. in passeng vict
0 dead passeng vict

Indicateur de suivi des victimes tiers



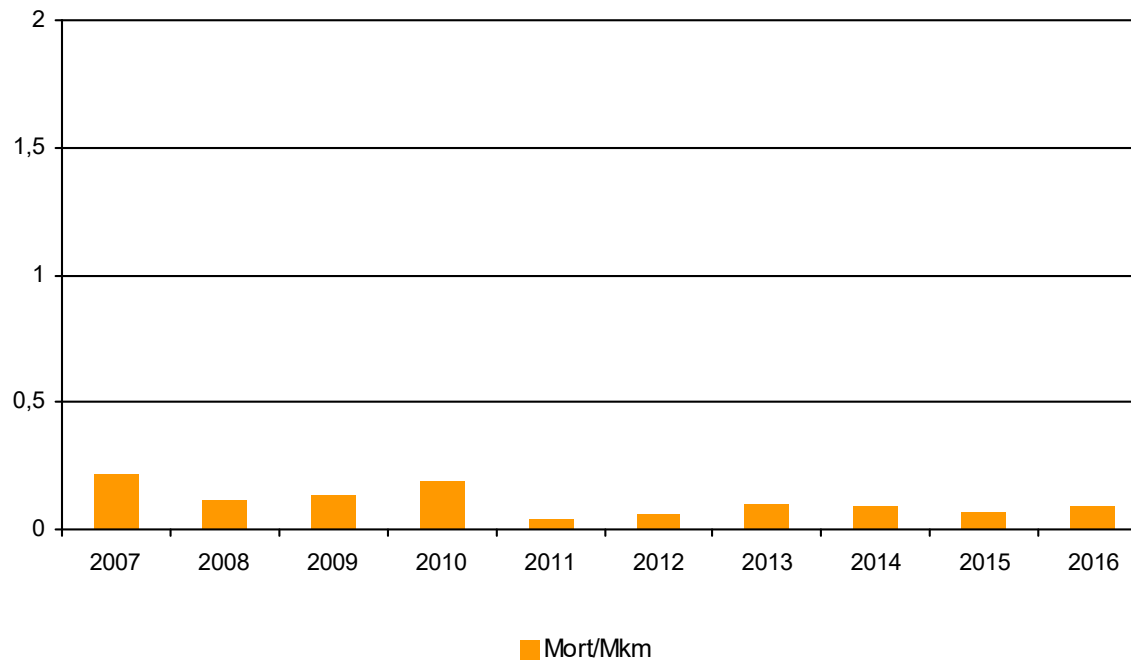
In 2016
441 vict 3rd parties for 1439 vict
44 seriously injured 3rd parties
7 dead among 3rd parties vict



Global results

Indicators on victims

Indicateur de suivi des victimes décédées



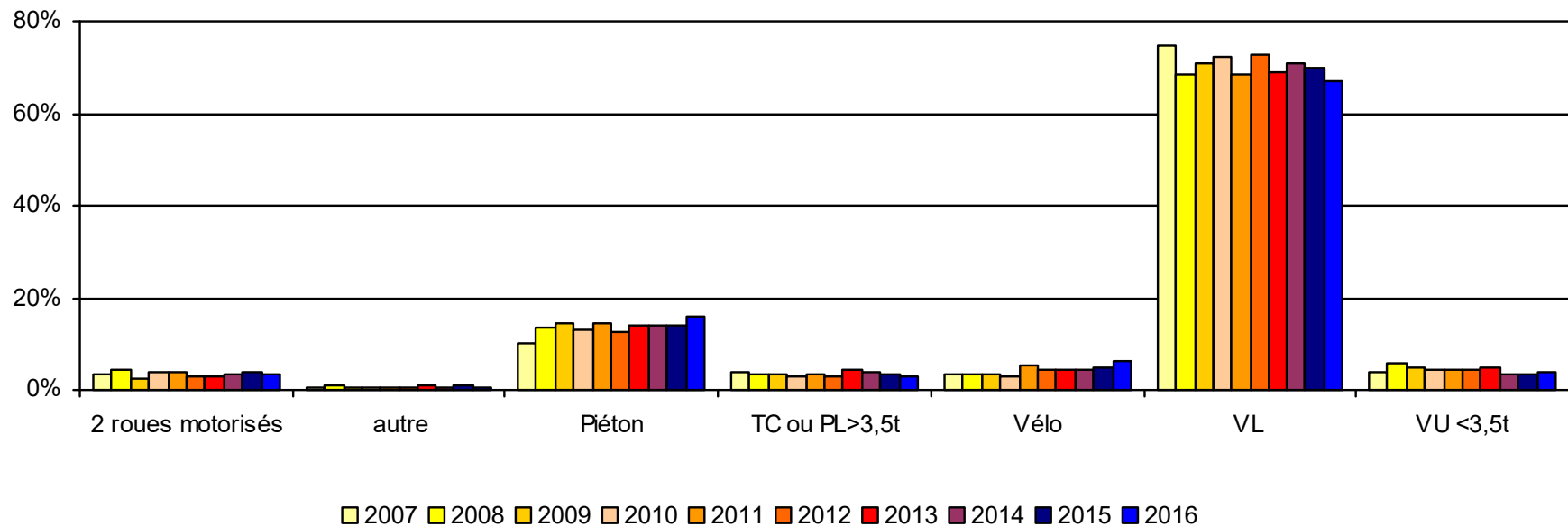
In 2016
7 deads

graphique 30

EVENTS

Road accidents

Distribution of collisions in 3rd parties

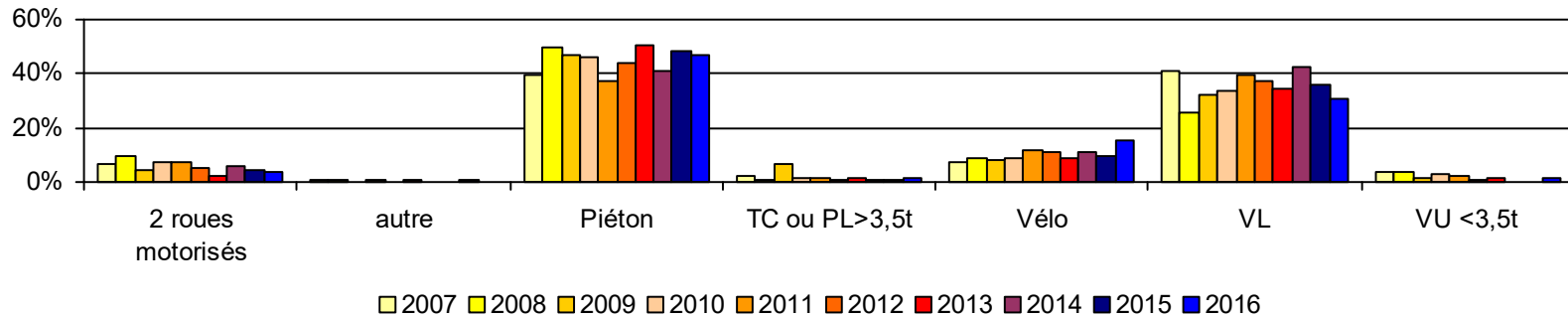


gr

EVENTS

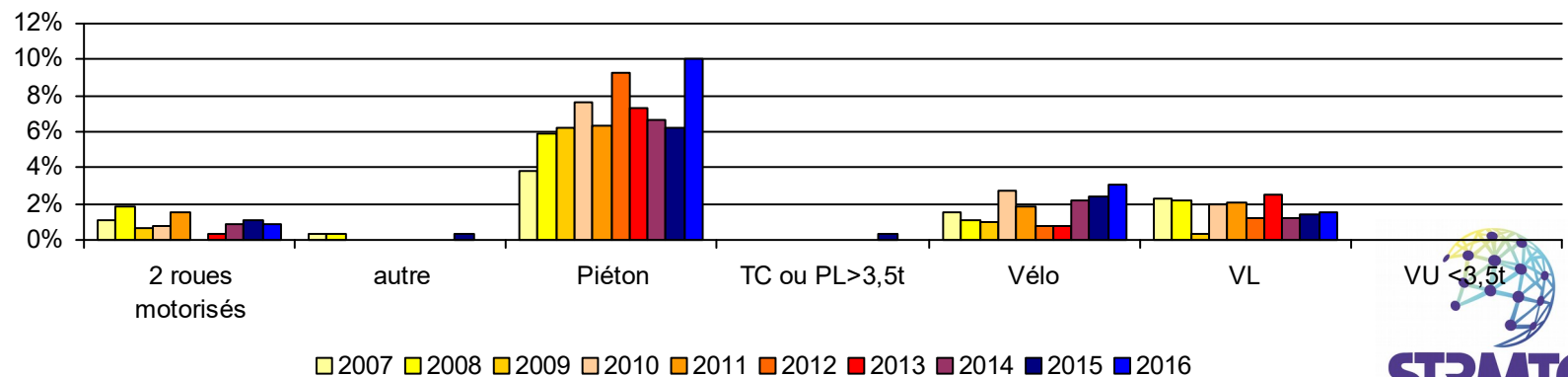
Road accidents

Distribution of victims in 3rd parties



graphique 42

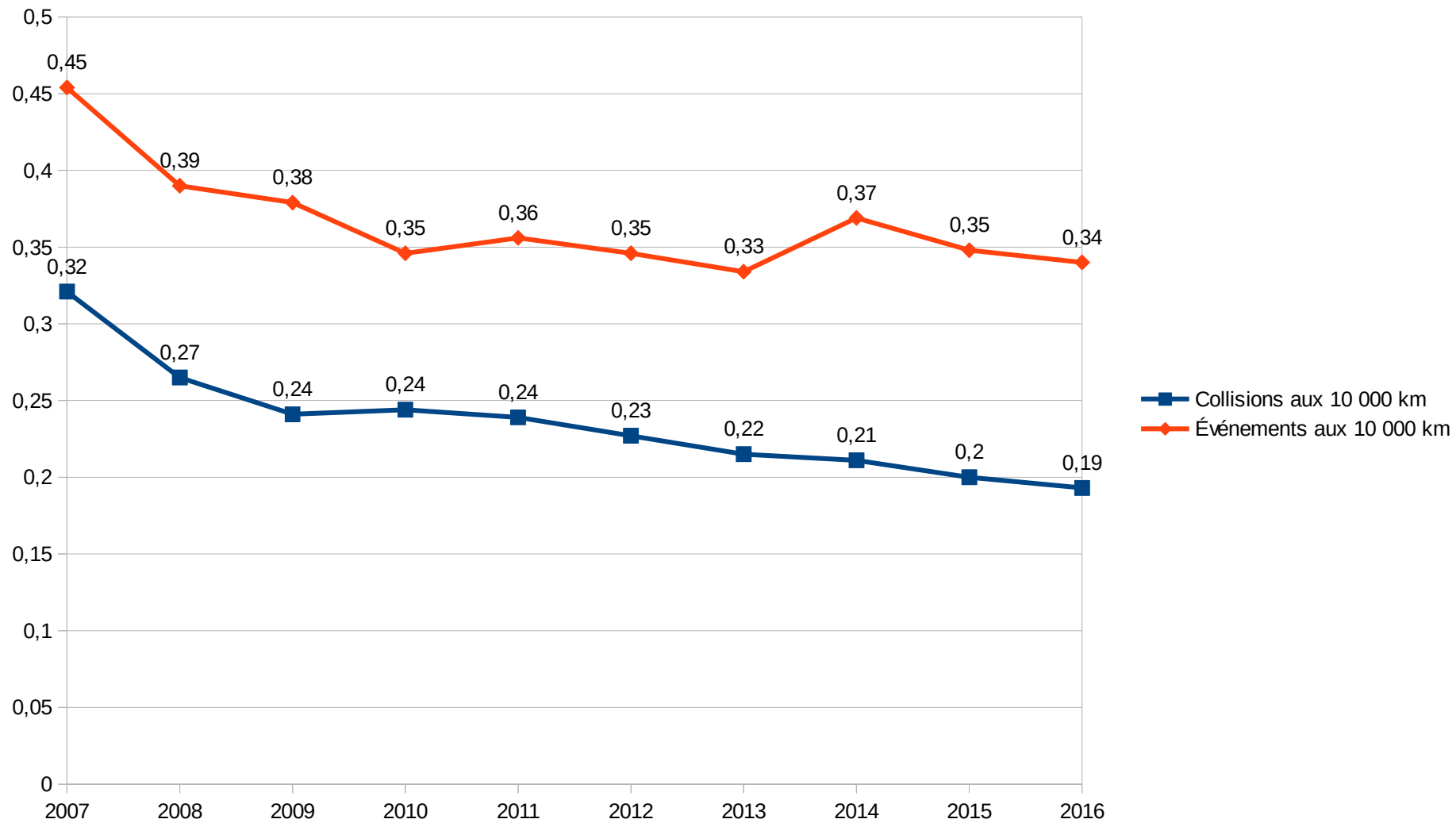
Distribution of seriously injured victims in 3rd parties



graphique 43

EVENTS

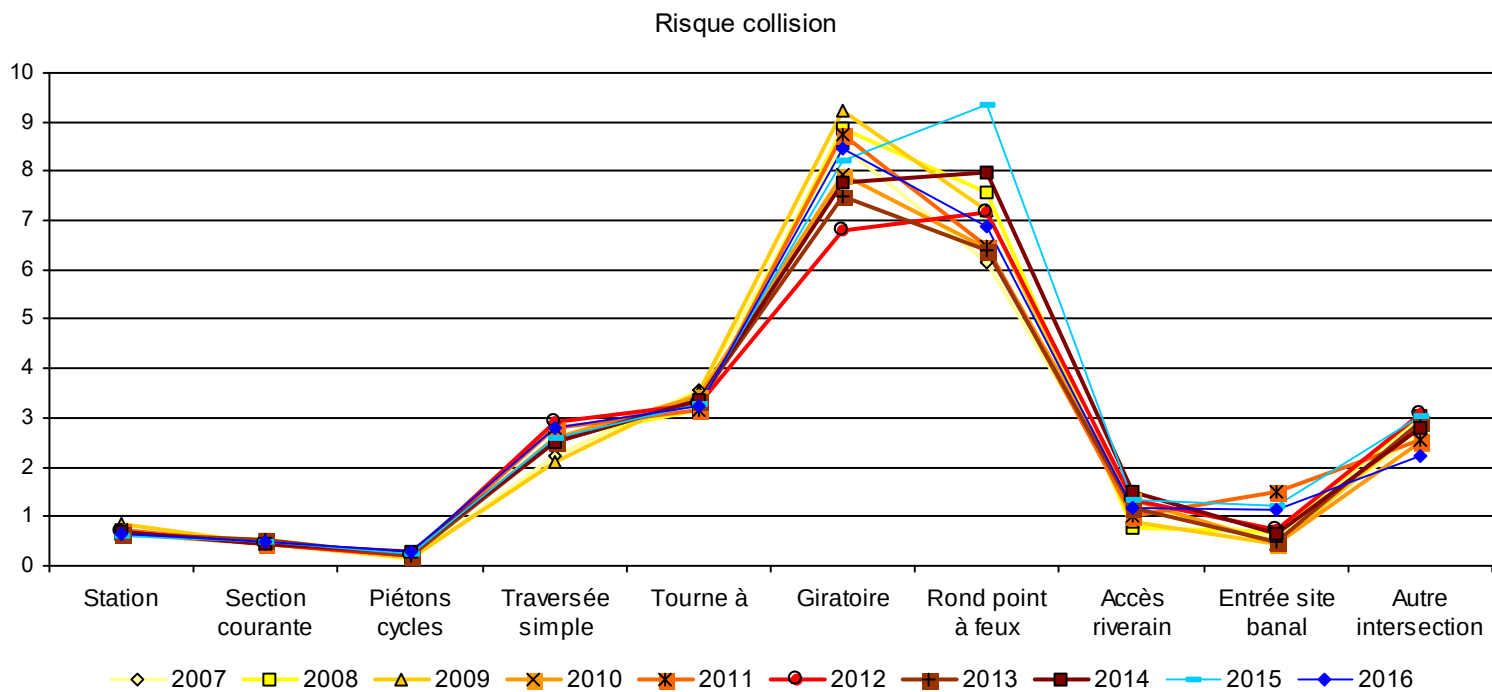
Road accidents



EVENTS

Road accidents

Comparison of configurations



graphique 52