

The European Technical Assessment

Working with Cerema: a partnership open to all companies

Cerema has been an EOTA member since 1996 and takes an active part in standards activities in the field of infrastructure via BNTRA and the ETA Unit. Cerema is a public administrative body under the Ministry for Environment, Energy and the Sea (MEEM). It produces and disseminates the state of the art, serves public contracting authorities and works in partnership with those involved in the construction field.

Through the ETA unit within the Cerema ITM, Cerema is a Technical Assessment Body for EOTA serving manufacturers to provide a link between their products and the possibilities offered by the European market.

With expertise in the fields of civil engineering and infrastructure, Cerema is a preferential contact.

To contact us

Tel.: 01 60 52 31 31
Ask for the European Technical Assessments Unit
E-mail: ete-setra@cerema.fr

Adress: Cerema infrastructures de transport et matériaux
110 rue de Paris - BP 214 - 77487 Provins Cedex

Contact and useful addresses

To learn more about Cerema and the Cerema ITM:
www.cerema.fr
www.infra-transport-materiaux.cerema.fr/evaluations-techniques-europeennes-r251.html

For any information on how EOTA operates and access to published ETAs and DEAs:
www.eota.be

For useful documentation on the Construction Product Directive (CPD):
www.rpc.net

To find out about TABs and certification bodies:
ec.europa.eu/growth/tools-databases/nando/

At a time when environmental and energy transitions are leading to the development of green building products and techniques, Cerema can provide help for manufacturers to innovate.

Whatever their country of origin, any future clients are welcome at Cerema. They will find a high level of expertise and, for a moderate cost, maximum benefit: entry into the European market with the CE marking.

Even if you do not file any application, Cerema can meet you and give you the necessary information to optimize your costs and deadlines.

*Expertise and limited cost for
maximum benefit:
Entry into the European market*

Why an ETA?

The European Technical Assessment, like standardization, is an essential tool for competitiveness. The aim: to obtain a CE marking as a passport for your products.

A European Technical Assessment enables manufacturers to make a Declaration of Performance (DoP) and affix the CE marking.

European Technical Assessments succeeded European Technical Approvals with the publication of Regulation No. 305/2011 of the European Parliament and of the Council of March 9, 2011, laying down harmonized conditions for the marketing of construction products and repealing Council Directive 89/106/EEC (known as the Construction Product Directive or CPD).

An ETA applies to a particular product in the construction field that is not covered by a harmonized standard. As part of the CPD, this is a first step towards placing the product on the market.

Once the ETA has been issued for the product, the manufacturer must produce the DoP and set in motion the process to obtain CE marking from a certification body.

To ensure consistency of performance, the ETA also defines the provisions for production control that the manufacturer must follow depending on the certification level, supervised or not by a certified body.



All the Technical Assessment Bodies (TAB) are grouped together within the European Organization for Technical Assessment (EOTA). Member States designate those organizations that are capable of issuing ETAs. For France, two bodies have been designated: Cerema and CSTB.

Cerema handles ETA files for construction products related to infrastructure, while CSTB is more turned towards building products.

*A gateway to
the European construction market*

As a Technical Assessment Body, Cerema's mission is to support, advise and guide manufacturers towards obtaining the European Technical Assessment.

Un choix orienté vers la compétitivité de demain

Obtain a European Technical Assessment with Cerema as TAB

Steps	Our added value
1 > Contact Cerema as a body authorized to issue European Technical Assessments	<ul style="list-style-type: none"> Initial contact Information on the procedure by the TAB Receipt of the official ETA request and drawing up a contract with the TAB Send the ETA application to EOTA
2 > Complete a European Assessment Document (EAD) with EOTA and the relevant TABs if there are no harmonized technical specifications for your product	<ul style="list-style-type: none"> Draw up a work programme Assemble a project team with other TABs Write up an EAD and have it adopted by EOTA Have the EAD validated by the European Commission
3 > Prepare an EAD-compliant test programme with Cerema	<ul style="list-style-type: none"> Draw up a test programme based on the EAD Validate the test programme with TAB experts
4 > Perform the tests and have them validated by Cerema	<ul style="list-style-type: none"> Perform the tests prescribed Send the test reports to the TAB Have the tests validated by TAB experts
5 > Write up the European Technical Assessment and Assessment Report in collaboration with Cerema.	<ul style="list-style-type: none"> Participate in drafting the ETA and the assessment report Validate the final documents proposed by the TAB Take any comments into account with the TAB after circulation
6 > Finalize the ETA process and contact a certification body to obtain the CE mark	<ul style="list-style-type: none"> Translate the ETA into French and have the translation validated by the TAB Check that the ETA has been published on the EOTA website Start the certification process

The basics of ETA: testing and expertise

As a Technical Assessment Body, Cerema provides follow-up to tests, from programming to in-laboratory monitoring. Experts representing Cerema are available to help, advise and listen to manufacturers.

On behalf of EOTA, Cerema guarantees the test results that have been performed. It may be present during testing, then check the test reports from laboratories

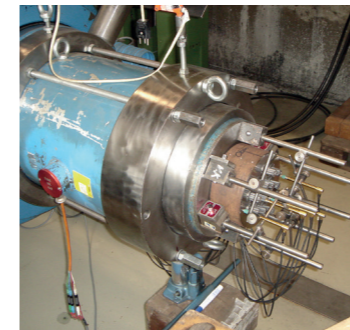
and prepare an assessment report which will prove the quality of the European Technical Assessment.

As test results may be subject to interpretation, Cerema expertise in conjunction with manufacturers' know-how can help to continuously improve our understanding of performance and the risks related to the products assessed, and provide added value to the European Technical Assessments issued.

Fields of activity based on Cerema expertise

In addition to handling ETAs, Cerema provides the link between manufacturers and European working groups to participate in drafting EADs and defending French positions within its areas of competence.

Historically, Cerema's ETA-related work covers two types of products:



Post-tensioning kits and injection materials

These products were previously covered by ETAG 013 which will be replaced by two DEAs during 2016.

Assessment of post-tensioning kits is based on DEA 160004 «Post-tensioning kits for prestressing of structures» This document covers all types of anchors, single strand heads, multi strands, anchorages for straps, flat anchorages, etc., for use in indoor or outdoor prestressing.

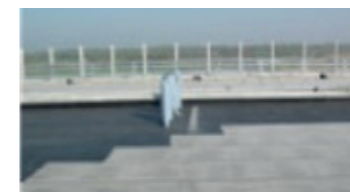
DEA 160027 «Special filling products for posttensioning kits» covers injection materials, special grout, waxes and greases.



Falling rock nets

ETAG 027 «Falling Rock Protection Kits» is used to validate the performance of protective nets against falling rocks. The kits assessed are classified according to the impact energy that the net can stop. The tests include two drops at service energy and one drop at maximum energy. ETAG 027 will be converted to a DEA by 2018.

Cerema also has skills related to the following products:



Liquid waterproofing for bridgedecks

ETAG033 «Liquid Applied Bridgedeck Waterproofing Kit» allows CE marking of waterproofing kits for bridgedecks. The guide focuses on liquid applied bridgedeck waterproofing kits, for use exclusively on concrete bridgedecks.



Ultra thin layer asphalt

ETAG035 «Ultra Thin Layer Asphalt Concrete» covers ultra thin asphalt layers, which actually involve applying two products that have already been independently standardized. Together they form a new product used as asphalt surfacing.



Joints for bridgedecks

ETAG032 «Expansion Joints for Road Bridges» covers 7 families of joints ranging from simple expansion joints to modular joints.

Le Cerema dispose également d'expertise dans les domaines suivants : géotextiles/géosynthétiques, armatures composites, équipements de la route dont dispositifs de retenue routiers, etc.